



WITH **YOUTH**,
THROUGH ADVERSITY

SidebySideYouth.org

ANNUAL REPORT 2024-2025 At a Glance

3161
Youth & Family
Members Served

*Celebrating 130 years of care,
courage, and community*



**Time Spent
with SBS
Clients**

Hours of
Clinical Service
15,084

Hours of
School-Based Time
22,239

Hours of
Community Outreach
3,973



Reporting Dates July 1, 2024 – June 30, 2025

Board of Directors

Deanna Brock, *President*
Howard Schomer, *Vice President*
Tim Myers, *Treasurer*
Ryan Stone, *Secretary*
Melissa Blach
Jennifer Finger
Jennifer L. Gotti
Bernadette Miller
Ina Miller
Dale Satake

Agency & Program Leadership

Dr. Christine Isana Garcia, *Chief Executive Officer*
Alan Hencky, *Chief Financial Officer*
Denisse Mendoza, *Director of Practice and Program Development*
Karen Bischoff, *Director of Property and Risk Management*
Sheila Aceves, *Director of Development*
Tiffany Vigil, *Director of Human Resources*
Jolene Yee, *Director, Irene M. Hunt School*
Matthew Holt, *East Bay Regional Director*
Beatriz Behrens, *North Bay Regional Director*
Ashley Burns, *Program Director, Independent Living Program*
De'Misha Barker, *Program Director, Real Alternatives*
Laura Taylor, *Program Director, TAY Space*
Jasmine Cervantes, *Program Manager, Our Space*

Editorial Team

Sheila Aceves – Editor-in-Chief
Katie Rice Jones – Creative Director
Denisse Mendoza - Data Director
Betsy Ross – Data Editor
AND THEM – Designer
Sheila Aceves, Ariana Amanoni, Beatriz Behrens, Lito Briano, Christine Garcia, Katie Rice Jones, DW Timms – Writers
Katie Ravas for Drew Altizer, Paige Green, Andrew Hida, Gina Logan, Katie Rice Jones, Betsy Ross – Photographers

On the Cover:
Children walk side by side down the road adjacent to the San Francisco Presbyterian Orphanage & Farm in San Anselmo (circa mid-1900s)—the current site of Side by Side's San Anselmo Campus.

LETTER FROM OUR CEO: DR. CHRISTINE GARCIA



Dear Friends,

This past year was a pivotal one for Side by Side. As community needs grew, the young people who came to us presented with greater complexity and intensity in their lives. In response, we deepened and strengthened our programs—intentionally building more interconnected services so that young people can receive the comprehensive support they deserve.

Too often, when youth reach out for help, the services available to them are fragmented. Connections across programs are limited; providers have little time to collaborate, and communication often occurs only when a crisis emerges. When referrals exist outside of an organization, care can become even more disjointed, making it difficult to provide the intensive, integrated support that young people need to stabilize and thrive.

Because Side by Side now offers intensive care management through Enhanced Care Management (ECM), we have been able to change that experience. ECM allows us to intentionally connect medical care, dental care, mental health services, housing, job readiness, and mentorship—both within Side by Side and with trusted partners beyond our organization. As our youth navigate increasingly complex lives, these interstitial connections make it possible to provide truly integrated, whole-person care that supports long-term independence.

This approach is reflected in our growth. Internal referrals increased by 8% this year, indicating that young people were able to access multiple layers of support within Side by Side more seamlessly. Students attending the Irene M. Hunt School accessed Community Counseling beyond the school day, extending care into their daily lives. In the East Bay, youth participated in multiple programs simultaneously—receiving in-depth therapy through Community Counseling, building community through Our Space, accessing housing through Real Alternatives, and continuing their journey toward independence through the Independent Living Program.

As the complexity of our world continues to expand, Side by Side remains a place of refuge and growth where young people are seen, supported, and held within a coordinated network of care. As you read this year's report, we invite you to keep in mind a young person seeking academic and behavioral support within their community, or another navigating challenges across multiple domains, supported by services that communicate with one another and honor the full scope of their lived experience.

As ever, we thank our supporters who make this work possible. Together, we walk alongside young people impacted by adversity, supporting them toward futures rooted in connection, stability, and meaning.

With gratitude,

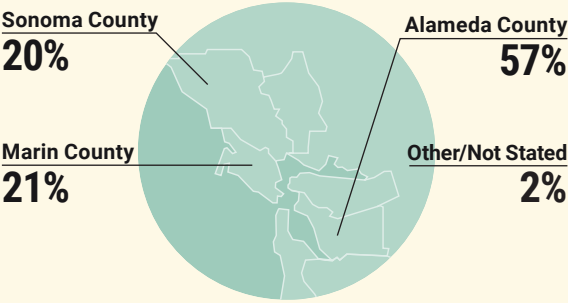
Christine Isana Garcia, Psy.D.
Chief Executive Officer
Side by Side

A PORTRAIT OF SIDE BY SIDE

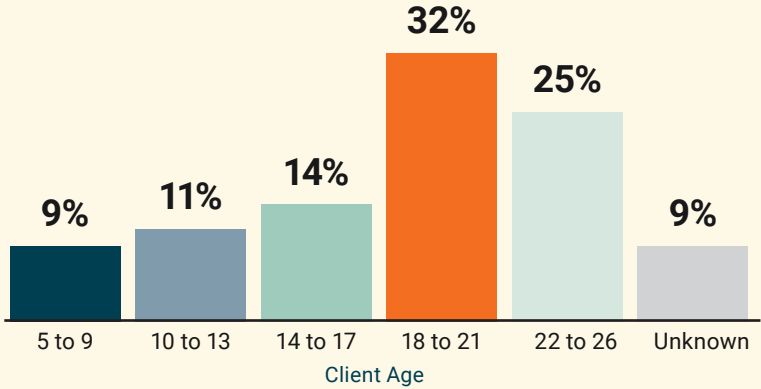
CLIENTS AND STAFF BY ETHNICITY



CLIENTS BY GEOGRAPHY



CLIENTS BY AGE



Clients served by multiple SBS programs: **14%**



Clients who are Medi-Cal or Free/Reduced Lunch eligible: **72%**



DIRECT CARE STAFF

- 28** Clinicians & Case Managers
- 7** Peer Specialists & Youth Advocates (includes 1 Intern)
- 10** Teachers & Behaviorists
- 17** Teaching Aides & Assistants

* Figures on this page do not include drop-in clients.

PROGRAM HIGHLIGHTS

BEHAVIORAL CHALLENGES, EMOTIONAL DIFFICULTIES, AND MENTAL HEALTH ISSUES OFTEN REVEAL THEMSELVES IN CHILDHOOD AND EARLY ADULTHOOD. These challenges and issues can impact a young person's functioning at home, in school, and in the community. We view our work as a partnership between youth, parents, other caregivers, and treatment teams. Together, we can help young people identify and understand their feelings, learn effective coping skills, thrive in school, and begin to heal from life's challenges. Learn more about our programs at SidebySideYouth.org/programs.

IRENE M. HUNT SCHOOL Special Education (Marin County)

284 students and their family members served this year

The **Irene M. Hunt School** in San Anselmo is a non-public day school serving students from the Bay Area in grades K-12 who face social, academic, emotional, and behavioral challenges that cannot be fully supported in the public school system. The school's overarching goal is to help students return to their neighborhood mainstream schools equipped with the skills to thrive both socially and academically.

The Hunt School features small class sizes (with a 4:1 student-to-staff ratio), organized by elementary, middle, and high school levels, and offers a therapeutic environment where students learn to regulate behavior, maintain focus and resilience, build healthy, trusting relationships, and succeed academically.

The academic curriculum is individualized and enriched with a wide range of activities, complemented by a school-wide positive behavior



program. In addition, students receive personalized mental health treatment to support their overall well-being and growth. Group therapy services provide additional support and promote earlier, more successful graduations.

TAY SPACE Acute Emotional and Mental Health Services (Marin County)

362 young people and their family members served this year

TAY Space, located in downtown San Rafael, supports youth ages 16 to 26 who are navigating acute mental and emotional health challenges, including bipolar disorder, schizophrenia, anxiety, and depression. A multidisciplinary team works with up to 28 youth at a time, creating individualized treatment plans and providing case management. Behavior coaches provide evidence-based interventions that reduce harmful behaviors, strengthen coping strategies, and build resilience. The team connects youth to essential resources, including housing, education, and employment services, and coordinates individual therapy and psychiatric care.

TAY Space provides transitional housing for qualifying clients and serves as a welcoming drop-in center for any youth in Marin seeking a safe space and a sense of community. Drop-in services include job coaching, substance use recovery support, workshops on stress reduction and mindfulness, money management, and independent living skills.

TAY Space also fosters social connection through activities like



in-center games, potlucks, and birthday celebrations, as well as outings to movies and field trips. Twice weekly, it distributes food to youth in need. Additionally, the program maintains an emergency closet stocked with toiletries, diapers, sanitary supplies, and basic clothing. Its ultimate goal is to help transitional-age youth gain the stability and confidence they need to thrive beyond their diagnoses and personal histories.

COMMUNITY COUNSELING

(Alameda, Marin, Napa, and Sonoma Counties)

1431 youth and their family members served this year. Raíces Unidas served 409 youth and their family members.

Side by Side's **Community Counseling** services are individualized and offered to youth and families throughout Alameda, Marin, Napa, and Sonoma Counties. Grounded in a holistic understanding of each young person's history and strengths, the program supports youth in developing coping skills, building stability, and strengthening their sense of personal agency.

In the North Bay, Community Counseling provides mild-to-moderate mental health services to youth and young adults ages 5 to 26 with active Medi-Cal coverage through contracted health plans. Services include individual, group, and family therapy. Services are offered in office, virtually, and in certain school districts. A special subset of services under Community Counseling North Bay is Raíces Unidas, which provides early intervention and mental health support for Latinx youth and families.



In the East Bay, Community Counseling provides moderate-to-severe mental health services to clients living in Alameda County. Services encompass individual and group counseling, rehabilitation support, case management, crisis stabilization, and medication management. Services are offered both directly in the community—in homes, parks, and other locations where clients feel comfortable—as well as in Side by Side's Hayward office. This is a flexible and defining aspect of the East Bay program.

OUR SPACE

LGBTQIA+ Support (Alameda County)

337 young people and their family members

The **Our Space** program provides a vibrant, safe environment in Hayward where LGBTQIA+ youth ages 13 to 24 can express their authentic selves and feel seen, accepted, and celebrated. The program also offers specialized support services and workshops for adult caregivers and families, as well as training for staff from schools, clinics, and other service providers who work with LGBTQIA+ youth. These professional workshops deepen understanding of the challenges LGBTQIA+ youth face and increase effectiveness in addressing them.

As the only LGBTQIA+ youth provider in Southern Alameda County, the program serves over 337 queer and trans youth and their families each year. The program receives referrals for disconnected LGBTQIA+ youth who are in or at risk of entering the foster system, experiencing isolation, or unhoused due to their sexual orientation, gender identity, or gender expression. Approximately 75% of program members are youth of color.

The program offers LGBTQIA+ peer support groups in schools, community-based mental health services, one-on-one case management, intergenerational community-building activities, paid youth leadership opportunities, and a welcoming community center with drop-in hours. The program is open for drop-in three days a week for life-skill workshops and community-building experiences such as field trips and dinners for youth, families, and allies.



Each year, the Our Space program hosts Queer Love Youth Pride, an event dedicated to uplifting and celebrating LGBTQIA+ youth. Attendees enjoy dazzling entertainment, delicious food, and opportunities to connect with community resources.

REAL ALTERNATIVES

Supportive Housing and Wraparound Services for Transitional-Age Foster and Probation Youth (Alameda County)

75 young people and their family members served this year

Located in Hayward, **Real Alternatives** offers a continuum of services including transitional housing in Southern Alameda County for current and former foster youth and/or those on probation, ages 18 to 24. It supported 75 youth in this reporting cycle in a range of living accommodations, from studios to three-bedroom apartments.

For all participants, the program provides a safe environment where youth can take responsibility for their lives in as many areas as possible and set future goals, all while having a safety net. Supported by our program staff, youth learn to budget and pay bills, shop for groceries and cook, live with a roommate, pursue an education, and find and maintain employment.

All Real Alternatives clients have access to mental health services and receive support in building or repairing relationships, learning new coping skills, and managing any mental health challenges. Crisis intervention and emergency support are available 24/7.

In a longitudinal study of Real Alternatives, Side by Side found that graduates achieved high levels of housing stability and similarly high rates of high school graduation. For more information on the study and its results, visit: SideBySideYouth.org/programs.



ENHANCED CARE MANAGEMENT

(currently in Alameda County)

23 clients served this year

Enhanced Care Management (ECM) provides whole-person, relationship-based support to help youth access medical care, secure stable housing, and identify school and employment opportunities, which ensures they do not have to navigate the path to independence alone.

Launched at Side by Side in May 2024, ECM is based in Alameda with recent expansion into the North Bay. By serving as a single point of coordination, ECM reduces crisis-driven interventions, duplication of services, and missed referrals—leading to improved medical, physical, and mental health, and overall wellness outcomes for youth.

ECM delivers personalized, intensive care coordination for young people with complex medical and behavioral health needs. The team works closely with community providers and each client's full care team to create a unified, responsive support network. With an approach grounded in cultural humility and awareness of intersectional needs, ECM empowers youth to build the stability and skills they need to thrive independently.



INDEPENDENT LIVING PROGRAM

(Alameda County)

240 clients served this year

Independent Living Program's (ILP) mission is to ensure that every eligible youth in care receives the skills, resources, and support they need to build a successful, independent future.

ILP, along with Alameda County Social Services, provides life-changing services to youth ages 14–21 who are currently or formerly in foster care or on probation. These young people often face enormous challenges, and ILP helps turn those challenges into opportunities for growth and stability.

ILP focuses on the whole person, beginning with health and wellness. Youth receive guidance on nutrition, access to mental and physical health care, and tools to build self-esteem and emotional resilience. ILP services help them form healthy relationships and permanent connections, prepare for life beyond foster care, and develop the skills to manage daily tasks and navigate community resources.

Housing stability is another cornerstone of independence, and ILP supports youth in planning, securing, and maintaining safe,



affordable housing. Education is equally critical, so ILP provides academic coaching, college readiness support including college touring, computer literacy training, and scholarships to open doors to higher education. Finally, ILP prepares youth for the workforce through career exploration, financial literacy, interview skills, and partnerships with employers committed to giving them a strong start.

ILP is more than a program—it's a lifeline that empowers youth to overcome obstacles, achieve their goals, and create bright futures filled with possibilities.

What people are saying about ECM...

“

“As soon as ECM started the CalFresh application for my client, they got accepted within a week. With food insecurity out of the way, my client could focus on their next goal, Top surgery.”

- Youth Advocate at Side by Side

“I found out about ECM services through a tabling event at Chabot College. After learning about the services ECM offers, I was able to connect my student to them for help with housing and employment. Through ECM's resources and connections, they were able to find stable housing and are now employed. With a bigger care team for my student, they now find their academic goals possible. This connection has made a difference and I look forward to connecting more students with ECM.”

- Cindy Gutierrez, Guidance Counselor at Chabot College

”

ILP IN FOCUS: A SNAPSHOT OF COMMUNITY AND POSSIBILITY

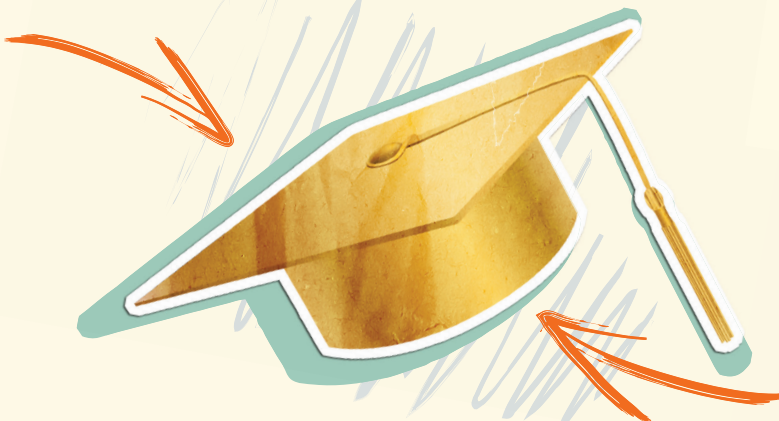
By DW Timms,
ILP Program
Coordinator



The Independent Living Program (ILP) hosts a variety of engaging, creative, and heart-filled events throughout the year that celebrate growth, community, and empowerment. Each event is more than just a gathering—it's a moment for our youth to connect, and learn, as well as feel seen and valued. These experiences help youth build confidence, develop independence, and know they're part of a community that truly cares about their journey. As the ILP team, we take pride in making sure our youth know we are taking each step with them, side by side!

In this Annual Report, ILP is proud to share a snapshot of the community events that our youth can look forward to.

In May, Independent City challenges youth to manage real-world finances through the Bite of Reality simulation, supported by Patelco Credit Union. Financial literacy is a foundational skill for independence, stability, and long-term success. This event gives youth the tools to make informed, responsible decisions about their money. Independent City makes learning engaging and practical, with the goal of helping youth build habits that promote self-sufficiency—such as budgeting wisely, setting financial goals, and avoiding debt, whenever possible. It empowers youth to approach adulthood knowing they can handle responsibilities and find resources that give them control over future financial decisions.



In June, we beam with pride during our ILP Graduation. This event honors ILP graduates, high school graduates, post-secondary graduates, and scholarship recipients. Celebrating youth during the ILP Graduation is deeply important because it recognizes their hard work, resilience, and the incredible milestones they've achieved. Graduation is a heartfelt acknowledgment of perseverance, growth, and the power of believing in our youths' future. It allows youth to be surrounded by other ILP participants, staff, families, and community members who cheer them on and acknowledge how far they have come. This celebration inspires youth to continue striving for greatness and achieving educational goals.

When August rolls around, our Back-to-School Bash energizes youth for a new year with resource tables, school supplies, entertainment, free haircuts, games, raffles, and food—basically everything they need to start the school year strong. The Back-to-School Bash is more than just a fun event; it's a boost of confidence and support that helps them feel ready to take on new challenges. Heading back to school can bring mixed emotions for our youth, who often stress about school supplies, time management, and balancing responsibilities. The Back to School Bash eases those feelings by providing a welcoming, uplifting space where they feel celebrated and prepared. Through resource tables, they gain access to tools and information that set them up for success. Free school supplies and haircuts help remove barriers and ensure every youth starts the year equipped and feeling their best. The entertainment, games, food, and raffles create a fun way to begin a new chapter. This event is also an opportunity for youth to get to know the staff and the community that surrounds them, helping them build relationships and trust as we guide them through their ups and downs.



The SoCal College Tour in October

gives youth a glimpse of their future as they explore campuses like San Diego State, CSU Northridge, CSU Dominguez Hills, CSU Long Beach, and UC San Diego. We've learned that college tours are an essential and impactful part of the ILP experience because they open doors to new possibilities and help youth see themselves in spaces they may have never imagined. Many of our ILP youth are first-generation college students or come from backgrounds where higher education can feel distant or overwhelming. By visiting college campuses, meeting students and staff, and exploring college life, youth begin to visualize their future and understand that college is not only possible, it's within their reach. The SoCal College Tour provides exposure, inspiration, and motivation. For ILP youth, these experiences go beyond a typical field trip; they are moments of empowerment. Visiting these colleges gives our youth a sense of pride and belonging. We hope they return to the Bay Area with a clear vision of what their future can look like and a renewed belief in their potential.

In November, our Harvest Dinner brings everyone together to celebrate gratitude and togetherness over a warm, catered meal. It's a time to pause, give thanks, and uplift each other while being surrounded by other youth, their families, and community partners.

The winter magic continues in December with our Holiday Party. The party is hosted in collaboration with other organizations, such as Constillate, a nonprofit that actively contributes to low-income communities by providing donations to ensure that all children and youth have access to essential resources, and First African Methodist Episcopal (FAME) Church. Events are filled with unity, music, cookie decorating, ornament making, and hot chocolate, while Constillate donates clothes, toys, and books spreading love and generosity. The holiday season can be emotional for youth who may not have traditional family support or a consistent place to call home, so providing care and community reminds them they are not alone and that they are valued, cherished, and remembered.



"My experience with ILP has been great. I don't remember exactly when I started, but I remember the first time I went to an arts and craft workshop, and I met Ralph and DW for the first time. They were so sweet and welcoming. From that workshop, I decided to participate more in ILP events and workshops because they were fun and engaging, which led me to meeting more staff members like Ixchel and Zy'Nique. When I heard about the SoCal college tour, I was super excited because I always wanted to see and visit those colleges. The trip itself was a great experience. I ended up forming great relationships with a lot of the youth that also attended. ILP in my experience, has been so sweet and very welcoming and I'm very glad I found this space and program!"

- ILP Youth



Each year, ILP's events create something special for our youth. From celebrating achievements at graduation to building community at our dinners and holiday gatherings, every event is designed with a purpose: to nurture growth, connection, and togetherness. ILP remains committed to creating meaningful opportunities that empower our youth to thrive, dream big, and believe in the power of their potential. Hosting engaging events has increased youth participation, and we will continue to positively shape the future of our programming by growing, evolving, and creating unforgettable experiences.

"Who are we? ILP!"

To learn more about Side by Side's Independent Living Program, visit - www.alamedacountyilp.org.

SETTING THE TABLE FOR COMMUNITY CONNECTION: HOW THE NORTH BAY TABLING STRATEGY MAKES AN IMPACT IN THE LATINX COMMUNITY

By Beatriz Behrens,
North Bay
Regional Director,
and in collaboration
with Lito Briano,
North Bay
Office Manager

Each year, Side by Side's North Bay region plans to participate in approximately 15 tabling and outreach events. These events are the cornerstone of our community engagement strategy, providing vital opportunities to connect directly with the individuals and families we serve.

Programs Represented

The North Bay tabling efforts are primarily led by Community Counseling North Bay (CCNB), Raíces Unidas, and Enhanced Care Management. These teams bring their expertise and passion to the forefront, offering resources, information, and support to community members in accessible and welcoming settings.

Purpose and Strategic Value

Tabling events serve multiple purposes that align with Side by Side's mission:

- **Community Visibility:** Increasing awareness of our services and presence in the region.
- **Program Growth:** Generating interest in our programs and expanding our reach.
- **Marketing and Development:** Providing a platform to share our story, build brand recognition, and foster donor and partner engagement.

- **Equity and Access:** Showing up in diverse community spaces to help dismantle barriers to mental health care, especially for Latinx, LGBTQIA+, and other underserved populations.

Event Selection Criteria

We carefully evaluate each opportunity to ensure alignment with our goals and capacity. Key considerations include:

- Event cost and available budget
- Proximity and accessibility of the location
- Staff availability and bandwidth
- Demographics and size of the expected audience
- Potential to build or strengthen community partnerships

Community Impact

Tabling events are more than just outreach—they are acts of inclusion and empowerment. By providing culturally responsive information and resources, we:

- **Normalize** conversations around mental health.
- **Reduce** stigma associated with seeking help.
- **Educate** the public about available services.
- **Foster** trust and familiarity with Side by Side among community members.

Establishing a face-to-face presence at community events has been extremely important. The Latinx community, some of whom are newcomers to the U.S., and many of whom are monolingual Spanish speakers, is one of the most underserved demographics for mental health. Being able to apply grassroots community-building directly for this demographic is a huge win.

Measuring Success

We define a successful tabling event by:

- The number of meaningful, face-to-face interactions with community members
- Distribution of Side by Side materials and resources
- Engagement with potential partners and stakeholders
- Visibility through branded materials and giveaways that extend our reach beyond the event itself

Learn more at SidebySideYouth.org/programs.

Swag That Starts Conversations!

When potential clients stop by one of our tables, they're not just picking up a Side by Side sensory sticker, they are learning how to soothe their anxiety.

From branded tote bags to quirky stress balls to playful notebooks, our swag is designed to spark curiosity, be useful, and keep us top of mind. Each item is a little reminder of the support and services we offer, because building connections should feel fun and memorable!



IN 2025, SIDE BY SIDE CELEBRATES 130 YEARS OF SERVING BAY AREA YOUTH!



Our story began in 1895, when the San Francisco Presbyterian Orphanage & Farm opened its doors in a small, rented house in San Rafael. It was born out of compassion—a response to a young widow’s passing that left three children in need of care.

Just a few years later, in 1899, philanthropist Captain Robert Dollar donated funds to purchase 20 acres in San Anselmo. By January 1900, a larger home was built to support 100 children. That same year, the Kent Estate hosted the first Grape Festival, a beloved event that supported the children, and that would thrive for 105 years thanks to the community and the dedicated Guilds of Sunny Hills.

Through the decades, generosity and innovation have shaped our growth. Captain Dollar gifted an additional 42 acres in 1920, expanding the farm. The 1950s brought a new mission: individualized care for adolescents, as foster care evolved after WWII.

In 1967, we officially became Sunny Hills Children’s Services, and by the late 1980s, we had added special education through the James

R. Sylla School. Partnerships and mergers in the 1990s and 2000s expanded our reach and programs—from the Marin Academic Center and the Bay Area Youth Center (BAYC) to new services and programs—The Irene M. Hunt School, Real Alternatives, and Our Space.

In 2018, we embraced a new name—Side by Side—to reflect the heart of our work: walking alongside youth and families through life’s challenges. When the pandemic hit in 2020, we pivoted to virtual services and creative engagement like online soccer tournaments and art contests. In 2024, we expanded again, welcoming ECM and ILP. We invite you to be a part of our future by getting involved in our community initiatives. Whether through volunteering, donating, or spreading the word, your support makes a difference.

From a small, rented house to a multi-county network of care, our journey has been defined by resilience, community, and unwavering commitment.

Here’s to 130 years of walking side by side—and to the future we’ll build together.

THROUGH THE YEARS



1895
Founding as San Francisco Presbyterian Orphanage and Farm



1899
Captain Robert donated funds to acquire 20 acres



1899
The first Grape Festival



1920
Captain Dollar donated the funds to acquire additional 42.6 acres



1930
Name changed to “Sunny Hills.”



1965
Cottages and administrative buildings erected on San Anselmo campus



1967
Name change to “Sunny Hills Children Services.”



1989
James R Sylla School opened on the Sunny Hills campus



1995
The Bank of Marin Golf Tournament established



2006
Final Grape Festival



2008
Sunny Hills merged with the Bay Area Youth Center in Alameda County, expanding services to include Real Alternatives and Our Space.



2016
Earned the Joint commission Gold Seal Approval



2018
Rebranded as Side by Side



2020
Launched virtual services across the agency to contend with COVID-19



2024
ECM and ILP join the Side by Side community



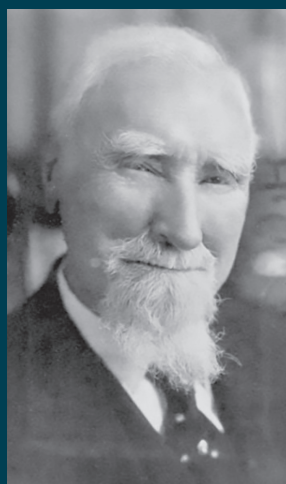
THE GIFT THAT BUILT A FUTURE: CAPTAIN ROBERT DOLLAR'S LASTING IMPACT ON SIDE BY SIDE



By Katie Rice Jones,
Communications and Marketing Manager

San Francisco Presbyterian Orphanage & Farm seen looking west from atop Red Hill (circa early 1900s)

In this issue of our Annual Report, it seems fitting to honor one of the pivotal figures in our history: Captain Robert Dollar. Known globally as a shipping magnate and philanthropist, Captain Dollar's generosity helped lay the foundation for the work we continue today.



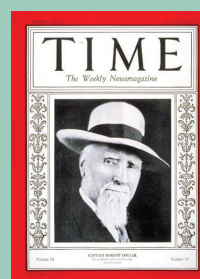
Captain Robert Dollar, often called the "Grand Old Man of the Pacific," was more than a shipping magnate—he was a visionary philanthropist whose legacy continues to shape lives in Marin County and beyond. Born in Falkirk, Scotland in 1844, Dollar immigrated to North America as a teenager, working his way up from a lumber camp cook's helper to a global shipping tycoon. His rise was marked by grit, generosity, and a deep commitment to community.

Though his honorary title of "Captain" came from his maritime shipping achievements, it's his land-based legacy that continues to make waves. In 1899, the philanthropist donated funds to purchase 20 acres in San Anselmo. By January 1900, a new home—the San Francisco Presbyterian Orphanage & Farm—stood ready, sheltering and caring for more than 100 boys and girls between the ages of 3 and 16. Through the decades, generosity and innovation shaped our growth. Captain Dollar gifted an additional 42 acres in 1920, expanding the farm. His gifts laid the foundation for what would

become our agency today. His donation wasn't just land, it was a commitment to community, healing, and transformation.

Side by Side remains a vital hub for youth-support services that empower young people to thrive. Serving over 3,100 youth and family members across Alameda, Marin, Napa, and Sonoma Counties, Side by Side continues to embody the spirit of Captain Dollar's gift.

As we reflect on our 130-year history and look ahead to the future, Captain Robert Dollar's contribution reminds us of the power of philanthropy rooted in purpose. His legacy helps us transform lives through our work. We are proud to carry forward his vision, walking side by side with youth as they navigate their unique paths to healing.



Eight years after his last donation, Captain Robert Dollar appeared on the cover of *TIME* magazine on March 19, 1928. The issue highlighted his achievements as a shipping magnate and philanthropist, coinciding with his 85th birthday and the 50th round-the-world voyage since founding the Dollar Line's global service in 1924.

References

1. Wikipedia contributors. (n.d.). Robert Dollar. In Wikipedia. Retrieved from https://en.wikipedia.org/wiki/Robert_Dollar
2. Time Magazine. (1928, March 19). Cover story on Captain Robert Dollar. TIME Archives.
3. San Francisco Chronicle. (1999, October 6). Obituary: Alice Dollar Hayden. Retrieved from <https://www.sfgate.com/news/article/OBITUARY-Alice-Dollar-Hayden-2804534.php>
4. Side by Side. (2024). Annual Report: Organizational mission and service statistics. (Internal publication)

SIDE BY SIDE COMMUNITY-RAISERS

EACH YEAR, SIDE BY SIDE HOSTS NUMEROUS EVENTS TO RAISE AWARENESS ABOUT THE CHALLENGES FACED BY BAY AREA YOUTH. WE WANT TO EXTEND OUR HEARTFELT THANKS FOR YOUR SUPPORT— IN DONATIONS, ATTENDANCE, AND TIME.

PLAYING IN THE STARS

On September 28, 2024, we had full hearts as we came together for an unforgettable play— The Ross Valley Players' *Crossing Delancey*. Dr. Christine Garcia, CEO of Side by Side, shared her inspiring words with the audience, and many Board members were in attendance. The night was more than special.



Select a Giving Tree gift tag,
buy a gift, &



drop a gift & tag at the
Trading Post
by December 20th.
all gifts support Side by Side Youth

THE GIVING TREE

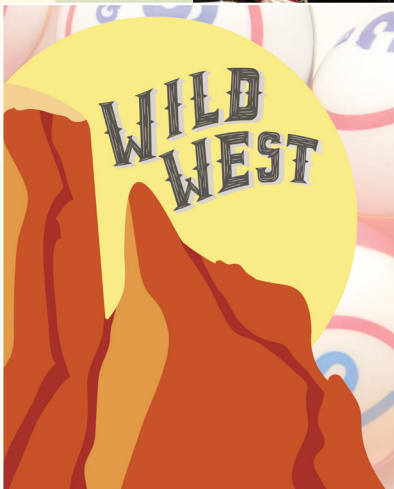
During the holiday season, Side by Side partners with Marin Country Mart to bring joy to our youth through the Giving Tree. This year's festive evening, on November 30, 2024, kicked off with a tree lighting ceremony and featured appearances from our CEO, the Marin Ballet, Santa, and more. This heartwarming event played a major role in distributing hundreds of gifts to Side by Side's youth.



MARIN VALENTINE'S BALL

The Marin Valentine's Ball, at the San Rafael Civic Center on February 8, 2025, was simply red hot. Event-goers helped us raise an incredible \$340,000 for the vulnerable youth of Marin County, benefiting three local agencies: North Bay Children's Center, the Godmothers of Catholic Charities St. Vincent's School for Boys, and Side by Side (us!).

The Ball was a memorable evening with 380 attendees enjoying cocktails, a seated dinner by Sage Catering, an awards ceremony honoring Don Meroff, silent and live auctions, and a post-dinner set with Jon Chi & The Pacific Syndicate and DJ Adam Twelve. A special thank you to our emcee, Liam Mayclem, for his lively banter and making the evening even more enjoyable.



THE GLENWOOD GUILD WILD WEST BINGO TOURNAMENT & DINNER

Supporters won like never before on May 3, 2025, at The Club Restaurant at McInnis Park. The Glenwood Guild Wild West BINGO Tournament & Dinner was a fundraiser benefiting Side by Side's Irene M. Hunt School. Eventgoers' support made a difference for at-risk youth served by the school.

BANK OF MARIN 31ST ANNUAL GOLF TOURNAMENT

It was a stellar day on the greens at StoneTree Golf Course for the 31st Annual Bank of Marin Golf Tournament benefiting Side by Side. On June 2, 2025, we had 100 golfers navigating the challenging fairways and greens, savoring delicious food and drinks, and vying for prizes. The event also featured a lively auction and inspiring speeches from our CEO, Dr. Christine Garcia, Bank of Marin's CEO, Tim Myers, our Board President, Deanna Brock, her son, Ben, a former student of the Irene M. Hunt School, and one of his first teachers there, Chloe Lechuga. The event successfully raised over \$117,000 for Side by Side's youth services.



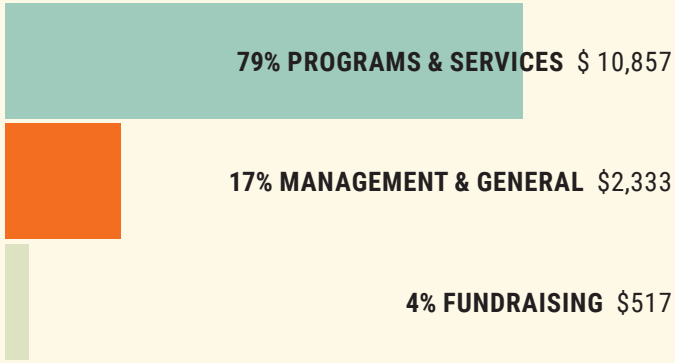
QUEER LOVE YOUTH PRIDE

Our Space celebrated their 12th Queer Love Youth Pride (QLYP) on June 6, 2025, at the REACH Ashland Youth Center in Ashland. Produced by Side by Side's Our Space staff and clients, the event highlighted LGBTQIA+ interconnectedness, performances, and brilliance. An Our Space client emceed the event, which featured solo acts and group performances, including song, dance, spoken word, instrumental music, and a drag performance. Over 100 people attended the event, making it a truly memorable celebration of connectivity and community. Youth vendors displayed a variety of LGBTQIA+ themed art, crafts, and products, highlighting the creativity and diversity within the community.



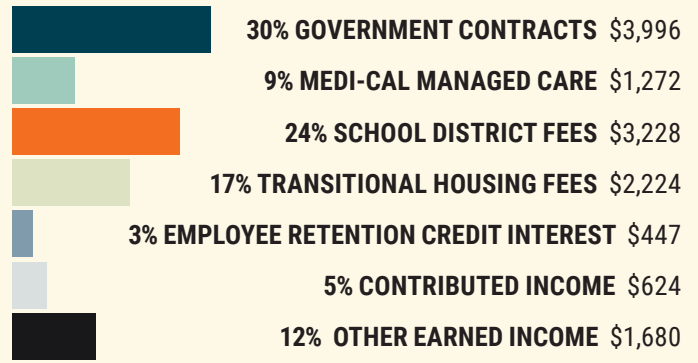
FINANCIALS

EXPENSES BY TYPE (% and 000's)



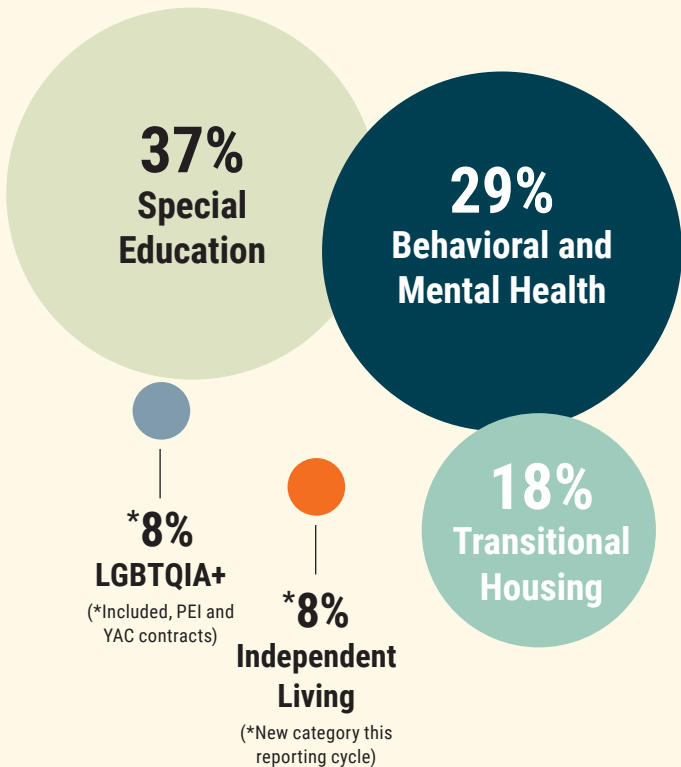
TOTAL \$13,707

REVENUE BY TYPE (% and 000's)

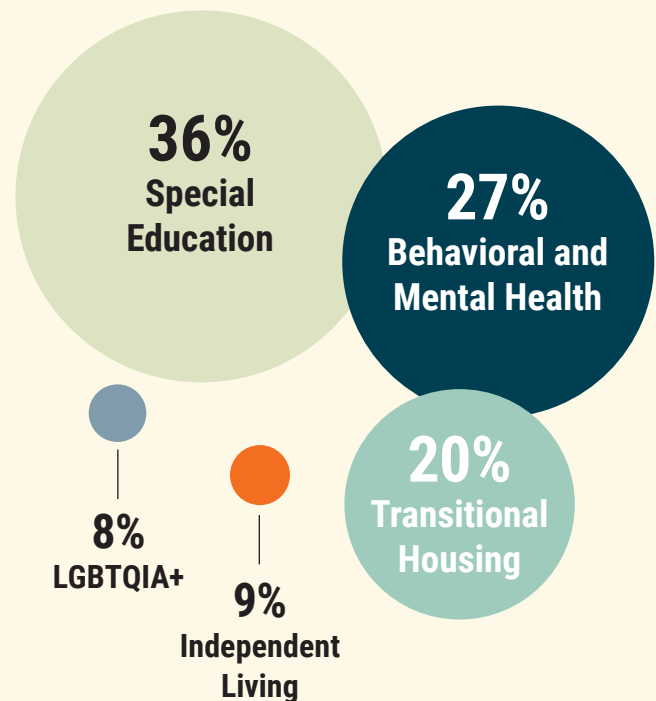


TOTAL \$13,471

EXPENSES BY SERVICE AREA (%)



REVENUE BY SERVICE AREA (%)



FINANCIAL POSITION (000's)

Total Assets
\$21,108

Total Liabilities
\$14,358

Total Net Assets
\$6,750

TOGETHER, WE CHANGE THE STORY

A YOUNG LIFE CHANGED: MEET BEN

Like many of the kids that Side by Side serves, Ben arrived at the Irene M. Hunt School carrying the heavy burden of emotional and behavioral challenges. The school's caring team provided individualized, therapeutic support—building trust, restoring hope, and helping him believe in his future. Ben learned skills and strategies that allowed him to be successful when he returned to public school, but just as importantly, he learned to navigate the world with compassion and empathy for others.

Today, Ben is attending college, looking toward a future in engineering. His success is a testament to what's possible when a young person gets the right support at the right time.

Ben's story shows the life-changing impact of walking side by side with young people, with dedication and commitment. And it speaks directly to what a donation from you can help accomplish.



Ben with his parents, Deanna Brock and Daniel Freeman



We invite you to learn more about Ben by watching his moving video, "Ben's Journey."

To watch Ben's video, use this QR Code:



WHY YOUR SUPPORT MATTERS TO US

Each year, we serve hundreds of young people: children, teens and young adults wrestling with depression, anxiety, identity, loss, behavioral health challenges, or unstable home environments. We offer them:

- **Comprehensive, individualized assessments and therapeutic interventions**
- **Safe, affirming spaces for LGBTQIA+ youth**
- **Transitional housing and mentoring for those moving toward independence from foster care or the juvenile justice system**
- **Educational support and life-skills coaching so they can graduate high school and imagine college or career**

WILL YOU HELP US KEEP WALKING SIDE BY SIDE WITH OUR YOUTH?

Your tax-deductible gift of \$50, \$1,000, \$10,000 (or whatever you can give) directly supports a young person's journey toward healing and hope. Because of friends like you, youth who once believed they had no future are now walking toward hope, supported, rooted, and ready to rise.

Donate today at SidebySideYouth.org or use our QR Code.





THANK YOU FOR JOINING SIDE BY SIDE ON OUR JOURNEY.

THE FOLLOWING GENEROUS SUPPORTERS GAVE SIDE BY SIDE CASH GIFTS BETWEEN JULY 1, 2024, AND JUNE 30, 2025. EACH GIFT, NO MATTER THE SIZE, ENABLES US TO WALK WITH BAY AREA YOUNG PEOPLE, IMPACTED BY ADVERSITY AND PROVIDE THE SAFE SPACE MANY HAVE MISSED IN THEIR LIVES. **THANK YOU!**

\$50,000 +

Five Bridges Foundation**
Marin Community Foundation**
Marin Valentine's Ball*

\$25,000 - \$49,999

Community Foundation Sonoma County*
Kaiser Permanente Community Benefits - Marin & Sonoma County
Kaiser Permanente Community Benefits - Southern Alameda
LaureL Foundation
Morris Stulsaft Foundation**
Sutter Health Eden Medical Center

\$10,000 - \$24,999

Bank of Marin **
Bella Vista Foundation*
The Eucalyptus Foundation
Fenwick Foundation**
Fleishhacker Foundation
Fullerton Family Foundation**
Virginia Harmon Heffernan Foundation*
Horizons Foundation*
J. Patrick Hunt & Frankie Hunt**
George H. Sandy Foundation**
Sonoma County Vintners Foundation
Jacqueline & David Spielberg**
Tipping Point Community*
West Davis & Bergard Foundation
Bernard E. & Alba Witkin Charitable Foundation*

\$5,000 - \$9,999

Anonymous (1)
AHS Foundation**
Barbara M. Burns Foundation
Bay Area Physicians for Human Rights*
Melissa Blach & Ryan Henderson
Deanna Brock & Daniel Freeman
Cornell Charitable Fund
Ferrari Owners Charitable Foundation
Harbor Point Charitable Foundation
Hobson/Lucas Family Foundation
KCM Investment Advisors*
Marin Sanitary Service**
Tim & Oksana Myers*
Dale Satake*

\$2,500 - \$4,999

Autodesk Foundation Employee Engagement Fund
Seth & Amy Barad**
Bon Air - Greenbrae*
Gayle DeKellis & David Clayton**
FIS
Ghilotti Construction Company**
Jennifer L. Gotti**
Robert H. Greene Real Estate*
Nannette Griswold **
Julia L. Grant Donor Advised Fund of CFSC
KPMG**
Jason Lorenz
Carole & Bruce MacPhail**

March Capital Management
Kathlyn McPherson Masneri & Arno P. Masneri Fund**
Midstate Construction
Bernadette Miller
Pacific American Group
Red Hill Shopping Center
Safeway Foundation
Sandia National Laboratories
Charles Silverman*
United Way California Capital Region*
West Coast Reinforcing

\$1,000 - \$2,499

Arntz Family Foundation**
Belvedere Fund**
Boca Pizzeria, Mamita & Cielito
Adolph & Jeanne Capurro Revocable Trust**
Barbara Carbone & Gregg Lyman**
The City POS
Lyndsey & Jimmy Conrad
Cook Solutions Group
County of Marin Community Service Fund
Mary Denton & Monte Deignan**
Equator Coffee & Teas
Christine Isana Garcia
Fred Gellert Family Foundation**
W. Robert Griswold Jr. & Alexandra Griswold
The Heck Foundation
Dr. Andrea Hedin & Peter Fisher
Nicolle Henneuse**
Ashley & Riley Hurd

Jackson Fund of Community Foundation Sonoma County
Ashwin Kakani
Stanley S. Langendorf Foundation**
Lechuga Brancato Family
Marin Charitable**
Marin Community Service Fund
Nathan Martino
Martz Accountancy Corporation*
Deborah N. Matthies**
Robert & Suzanne McLennan**
Purple Lady/Barbara J. Meislin Fund**
Ina Miller
Montecito Plaza Shopping Center**
National Black Justice Collective (NBJC)
Next3 LLC
Next One Staffing
Novick Family Charitable Fund**
PG&E Community Investment Program*
Private Wealth Partners LLC*
Q2
Robison Family Foundation**
Rotary Club of San Rafael
David & Tonia Rubin
Scalpellino
Schultz Foundation**
Andrea Schultz
Speedway Children's Charities**
Stand Out for Good
Starr King Unitarian Universalist Church
Ryan Stone

* Donors to Side by Side for 10-19 years ** Donors to Side by Side for 20 years or more ◯ For the Kids monthly giving donor

Westamerica Bank**
Nikki & Jim Wood

\$500 - \$999

Abbott Laboratories Fund
Active 20-30 Redwood Empire
#1029*
Alten Construction**
Sidney F. Baker**
Julie Ballard
Gregory Brod
Ms. Joan Brown
Lydia & Tony Cameron**
Claudia Carlson & Jack
Brenneman**
Fidelity Charitable Gift Fund
Jennifer Finger
Flynkins Fund of Horizons
Foundation*
Darlene & Vernon Goins
Hennessy Advisors, INC
Hennessy Funds*
International Brotherhood of
Electrical Workers Local Union
Izaiah Jackson
Tom & Diane Johnston**
Keyes Family Trust**
The Lodge
Marin Lodge No. 200 I.O.O.F.**
Dennis Neary**
Pace Loan Group
Edward Pollak Family Fund**
J.D. Schramm & Ken Daigle
Jennifer & Mike Shepard**
Mercedes Shinohara-Taylor
Carole & John Shook**
Olga Stephan
Jeffrey Stephenson
Jacob Sung & Seyoung Lee
Peter Timmerman
Quoc Tran

\$250 - \$499

Anonymous (4)
Jessamy Barker
Linda & James Christensen*
Russ & Lynn Colombo*
Costco Wholesale
Celeste & John Craemer*
Judy Digiorgio
Todd Dolci
Elkin Family Fund*
David & Anne Feinberg
Jefferson & Shirley Graves**
Michael & Elizabeth Hatfield
Charitable Fund*

John Heliotis
Alan Hencky
Diana & Jeffrey Hill**
Kelley Family
Jane Kim & Brian Weimer
Anonymous
Edward Morgan
Mr. & Mrs. Thomas Obletz*
Hugh & Linda Pettit**
Patricia & Charles Raven*
Katie Rice Jones & Bradley
Jones
Jeanine Rossi
Oded Schwartz & Ruth
Rosenthal
Perry Seto
Cherie Sorokin*
United Way of the Bay Area**
Peggy Vaughan*
Anne-Marie Walker**
Naomi Zingman-Daniels

\$100 - \$249

Sheila Aceves
Sharon Adams
Debra Allen*
Mario Arteaga
Katherine Barrass**
Wes Barry
Howard & Marilyn Belove
Cindy & Bernie Benson**
Ronald & Bonnie Bernardini**
Karen Bischoff & Ed Boisson**
Mary Bramblett*
Danielle F. Brinner
The William and Carol Bryan
Charitable Fund
Dorothy Burk
Diana Caccamo*
Viki and Frank Card*
Sue & Joe Carlomagno**
Karen Carnegie
Diane E. Carr*
John Castro*
Jasmine Cervantes
John & Catherine Chiosso
The Clorox Company
Foundation*
Tim Cogliandro
Emily Courtney & Mike Rettberg
Bill and Edith Dagley
Pete & Judy Dardis*
Tony & Annette Davary
Lisa Delasol
Terry & Paul Descalso**
Dickson Ranch*

Elaine Divalma*
John Donahue*
Renee Dunn
Cheryl & Dave Egan
James Findlay**
Joe Goldenson & Ronnie
Jacobs
Robert Gollan*
Jim Hale*
Ahnjolieque Haskins
Inge Hendromartono*
Mark & Dale Hillard**
Tracy and Bill Hogan*
Deborah Hoke Smith and
Richard Smith**
Joe & Cara Hunt**
Chris Hurd
Boomy Jensen
Constance Jones*
Shauna & Tom Keenan**
Mr. & Mrs. Stuart Keirle**
The Stephen & Julie Kimball
Charitable Fund
Catherine Less
Janice Low
Carleton MacDonald
Zach McReynolds
Denisse Mendoza
The Mettner Family Trust**
Mr. & Mrs. Minoia*
Sally Mittelstaedt*
Laura & Glenn Miwa**
Peggy Moseley
Mountain Mike's Pizza Novato
Mountain Mike's Pizza Santa
Rosa
Kathleen Mullen*
Roger Nelson
Mark & Kay Noguchi**
Mr. & Mrs. Frank Noonan*
Jessica O'Dea-Bumanglag
Whitney O'Neill*
Chris O'Neill**
Barbara & Richard Patchin*
PG&E Corporation**
Adrienne Phalon*
Mr. & Mrs. James Phoenix**
Maggie Polan**
Sarah Pruden
Elizabeth Purvis*
Allan Rappaport Charitable
Foundation
Michelle Roberts
Sherry Rogers & Kathryn Ann
Fenger
Catherine Sammis

Trista Samole
Kimberly Rochat & Howard
Schomer
Tim Schulte
Carole & Douglas Sheft**
Mr. & Mrs. John Smith*
Ryan Soto
Marcia & David Sperling
Walt & Anna Spevak
Ronald & Suzanne Stowitz
Craig Sundstrom*
Gerald & Ann Marie
Suyderhoud**
Mari & George Tischenko
Catherine Tobin
Judy Torrison**
Angela Traeger & Julia Reed
Boyce
Trusource Consulting Group
United Way of North Central
New Mexico
Christina Van Winkle
Tiffany Vigil
Billie Jo Walker
Michael Webb & Patty Mullen**
Julianne Wilhelm
Judith Wilson**
Sandra Yoffie**

\$50 - \$99

Joyce & Robert Anderson**
Emma Barbosa Boehm & Alan
Barbosa
Vivian Bauer*
Beatriz Behrens
Helen Bredderman**
Lynn Brown*
Lynda Bunn
Delaney Burk
Nelia Camargo
Lido and Mary Cantarutti**
Anna and Benedetto Cico
Alice Cogliandro**
Diane Connor**
Michael Edward Declement
Sarah Delaney
Janet Heley Ekberg
Jorge J. Enriquez**
Erickson Family Fund**
Ruth Falkenberg**
Erdmuth Folker**
Groundswell Fund
Debra Heibert
William W. Jones**
Susan Larson
Peggy & Scott Maclise



SIDE BY SIDE

ENHANCED CARE
MANAGEMENT

SIDE BY SIDE

REAL ALTERNATIVES

SIDE BY SIDE

TAY SPACE

SIDE BY SIDE

OUR SPACE

SIDE BY SIDE

COMMUNITY COUNSELING

SIDE BY SIDE

INDEPENDENT LIVING
PROGRAM

SIDE BY SIDE

IRENE M. HUNT SCHOOL

S B Y S

Celebrating 130 years

Barbara Metzger**
Mr. Robert Miller*
Cassandra Monteith
Bea Newhall**
Kathleen Parker*
Mr. & Mrs. Richard Parker*
Margaret Paula*
Janet & Robert Pawlan**
William & Regina Rafferty**
Theresa Reyes**
Tracy & Betsy Ross
Mr. & Mrs. Joseph P.
Russoniello**
Ms. Janet Smith**
Brian Sobel
Barry Spitz
Deborah Thomson
Tara and Sean Ticknor
Dawn Wheeler
Jolene & Jeff Yee

GIFTS IN HONOR OF

Mary Denton
Leila Garcia Williams
Patrick and Sean Higgins
Hunt School Teacher
Appreciation (8)
Hayden Rubin
Dale Satake
Clare Shanahan
The wonderful folks at TAY

GIFTS IN MEMORY OF

Nick Alderson
Zona Bauer
Carter Belove
Michael Dunn
Tim Jackson
Liam Mancuso Palma
Antonia Rufferman
Muriel Tarrant
Dolly Torrison
Robert Vaughan

VEHICLE DONATIONS

Thomas Keenan

GOVERNMENT CONTRACTS & GRANTS

Alameda County Department of
Child & Family Services/Youth
Acceptance Collaborative
Alameda County Behavioral
Health & Recovery Services
Alameda County Social
Services Agency

County of Marin Behavioral
Health & Recovery Services

EDUCATION PARTNERS

Alameda Unified School
District
Art from the Heart
Berkeley Unified School District
Brentwood Unified School
District
Cal State East Bay Renaissance
Scholars Program
Chabot College
College of Marin
Cotati-Rohnert Park Unified
School District
Dominican University of
California
Five Keys Schools and
Programs
Guardian Scholars programs -
SF State, Sac State, Cal State
East Bay
Hayward Unified School
District
Healdsburg Unified School
District
Kentfield School District
Larkspur- Corte Madera School
District
Liberty Union High School
District
Marin County Office of
Education
Marin SELPA
Mill Valley Unified School
District
Miller Creek Unified School
District
Novato Unified School District
Oakland Unified School District
Oakley Union Elementary
School District
Peralta Colleges
Petaluma City Schools District
Reed Union School District
Ross School District
Ross Valley Unified School
District
Sacramento State Guardian
Scholars Program
San Francisco State Guardian
Scholars Program
San Francisco Unified School
District

San Lorenzo Unified School
District
San Rafael City Schools
Santa Rosa City Schools
Sausalito/Marin City School
District
Sebastopol Charter School
Sebastopol Unified School
District
Shoreline Unified School
District
Sonoma County Charter
Sonoma County Office of
Education
Tamalpais Union High School
District
Twin Hills School District

LEGACY GIVING SOCIETY

*Side by Side's Legacy Society
honors those individuals who
have thoughtfully included our
agency in their estate plans.
By designating a legacy gift to
Side by Side, the services and
programs that they support will
continue to touch the lives of our
clients for years to come.*

Anonymous (3)
Virginia Bertelsen
Kathryn L. Black & Todd Sparks
Sue Clark
Barbara Herrero
Diana & Jeffrey Hill
Elizabeth Johnson
William Jones
Russ & Kathy Ketron
Masneri Fund
Carole and Bruce MacPhail
Nora J. McCallie
Mr. & Mrs. Richard K. Robbins
John B. Robinson
Robert & Shirley Sanderson
Jacqueline & David Spielberg
Iathan Annand & John Stafsnes
Mary Tash
Cathy Tucker
Mrs. Helen S. Turney
Charles Walters

GUILD MEMBERS

*The Guilds of Side by Side
formed the backbone of support
for our agency for decades.
From community fundraisers
to the Grape Festival to
birthday treats for the Irene M.
Hunt School, the Guilds have
historically been integral to our
organization. We are honored
to recognize the Glenwood
Guild below for their continued
advocacy and commitment to
the young people that we serve.*

Active Members

Gill Keirle, *President*
Linda Christensen
Alice Cogliandro
Margaret Erickson
Ruth Falkenberg
Carole MacPhail
Barbara Metzger
Bea Newhall
Joy Phoenix
Maggie Polan
Terrie Reyes

Supporting Members

Katherine Barrass
Sue Moore
Anne Nelson
Vivi-Anne Regstad
Jan Smith

IN-KIND DONORS

Anonymous
Balletto Vineyards
Bank of Marin
Melissa Blach & Ryan
Henderson
Amy Brasil
Deanna Brock & Daniel
Freeman
Cafe Arrivederci
Cal Skate Of Rohnert Park
Karen Carnegie
Carol Shelton Wines
Ty Caton
Charles M. Schulz Museum
Comforts
Lyndsey & Jimmy Conrad
Cooley LLP
Curves for Women
Desire to Inspire
Dryvebox

Elite Island Resorts
 Exploratorium
 Frias Family Vineyards
 Christine Isana Garcia
 Sonia & Jason Gittens
 Glenwood Guild
 Jennifer L. Gotti
 Ashley & Riley Hurd
 KIA of Marin
 Mare Island Brewery
 Marin Magazine
 Maraea Master
 Brian McDaniel
 Bonnie Meyer
 Michael Merrill Design Studio
 Bernadette Miller
 Ina Miller
 Edward Morgan
 North Bay Business Journal
 Novato Toyota
 Mr. & Mrs. James Phoenix
 Piazza D'Angelo
 Katrina Rouse
 Kimberly Rochat & Howard
 Schomer
 Schumacher Photography
 Scoma's Sausalito

Senor Lechuga Hot Sauce
 St. George Spirits, Inc
 Stretch Lab
 Rich Walcoff

**HOLIDAY GIVING
 COMMUNITY PARTNERS**

*The following generous
 community partners help make
 sure that every Side by Side
 client has a gift for the holidays.*

Book Passage
 Center for Volunteer and
 NonProfit Leadership/ Secret
 Santa of Sonoma/
 Marin Country Mart
 Mary's Kids
 Mill Valley Middle School
 Toys for Tots

VOLUNTEERS

*Side by Side gratefully
 thanks the volunteers and
 organizations listed below who
 have spent countless hours
 helping with our 2024-2025*

*events, office administration,
 and program support.*

Kevin Abaya
 Iris Agnew
 Paola Arandia
 Emma Barbosa-Boehm
 Dave Bonaccorso
 Andrea Carnegie-Chester
 Jenni Castaneda
 Catchafire
 Marc Cercone
 Edmund Co
 Austin Cunningham
 Desire to Inspire
 Margaret DeVore
 Dryvebox
 Sofia Figone
 Dave Fujita-Militante
 Yahaira Garcia-Perea
 Marcus Gerstein
 Tanner Goldman
 Nicole Harrop
 Debra Heibert
 Peter Hsu
 Jennifer Irizarry
 Karen Jackson

Damian Jean-Pierre
 Brad Jones
 David Lacampagne
 Kelly Loonan
 Edgar Mendoza
 David Merck
 Krissy Myers
 Doug Murray
 Kelly Obremski
 Jaime Ortiz
 Dipak Patel
 Kristen Payne
 Melanie Rempe
 Frances Reyes
 Katie Rice Jones
 Simone Renzi
 Tracy Ross
 Misty Rudolph
 Nicole Skeffington
 Michelle Soto
 St. George Spirits
 Juliane Veselik
 Louise Wong
 Jeremy Yu

* Donors to Side by Side for 10-19 years ** Donors to Side by Side for 20 years or more ◯ For the Kids monthly giving donor

In preparing this report, we made every effort to ensure that it is accurate and complete. If there is an error or omission, please accept our apologies and notify the development department at development@sidebysideyouth.org so we can correct our records. This report lists all cash gifts received between July 1, 2024, and June 30, 2025. Cash gifts made after that date will be published in next year's report. In-kind gifts associated with an event held during the 2024-25 fiscal year are included in this report regardless of the date of receipt.

WAYS TO GIVE SidebySideYouth.org/ways-to-give



Monthly Giving Switch to sustained monthly giving via credit card to provide Side by Side with regular support we can count on.



Vehicle Donations Have an old car taking up space in your driveway or a need to free up your boat slip? Donate it to Side by Side!



Legacy Giving Leave a lasting legacy by designating a future gift through your estate plan.



PayPal We want to make donating easier. We now accept donations through PayPal at paypal.com/paypalme/sidebysideyouth.



Company Match Increase the value of your gift by taking advantage of your workplace's matching gift program.



Give In Kind Contributions of donated goods and services help stretch our program budgets that much further.



Stock Gifts of appreciated securities can be an easy way of making your charitable dollars go further.



Online Donations You can make a gift securely online at SidebySideYouth.org anytime, day or night.

LIKE FOLLOW SHARE



CAÑADA DE HERRERA



This photograph was taken from near this spot in 1918. It includes most of the original Mexican land grant of Cañada de Herrera (Blacksmith Glen), over ten square miles extending west from Red Hill and including most of western San Anselmo, Sleepy Hollow, and Fairfax. In 1839, acting governor Manuel Jimeno awarded the land to Domingo Sals, a 35-year-old Mexican soldier, as a reward for his military service. Sals built the first permanent home in San Anselmo on the small knoll across from the Isabel Cook Center. In 1893 the Carrigan House was built on the same site and is still standing today. Sals's original house was moved to San Rafael and is also still standing.

All the land to the right (north) of the Olema Road was part of the 574-acre Short Ranch purchased in 1869 by brothers J. O. B. and Jacob Short, who had arrived in 1846 as teenagers by wagon train from Missouri. Their ranch extended from Red Hill to Sleepy Hollow.

The large white building in the center right is the San Francisco Presbyterian Orphanage, which opened in 1900 (now the site of the Parkside Apartments). The orphanage became Sunny Hills in 1931 and Side By Side in 2018, and is still providing services in newer buildings just to the north. The former orphanage farm is now the site of Red Hill Shopping Center. Beyond, San Francisco Boulevard runs across the foot of Faudó Hill. Just beyond, to the left of Olema Road, are the vegetable gardens of Giuseppe Cordone, now the site of Sir Francis Drake High School.

On the skyline above the orphanage is Loma Alta, with Big Rock Ridge out of the picture to the north, and in the center White's Hill, then Bush Hill, and Pine Mountain in the distance. Not shown to the south are Bald Hill and Mount Tamalpais.

For more detailed information, scan the QR code with your smartphone.



SAN ANSELMO
A SPACE COMMITTEE



This modern-day image mirrors the vantage point from the historic Captain Robert Dollar photograph a few pages back. It's fun to do a "side by side" comparison.

 [sidebysideyouth](#)

 [sidebysideyouth](#)

 [sidebysideyouth](#)

SIDE BY SIDE™

www.SidebySideYouth.org



300 Sunny Hills Drive, Bldg. 5
San Anselmo, CA 94960
Tel: 415-457-3200

Return Service Requested

SidebySideYouth.org
f sidebysideyouth
@ sidebysideyouth
in sidebysideyouth

NONPROFIT
RATE



Side by Side Mission: To walk with young people impacted by adversity toward a future with connection and meaning.

Side by Side Vision: That all youth in our communities are resilient and have the resources, support, and skills to thrive and nurture the next generations.



Join Us for an Event in 2026!

WINTER.

MARIN VALENTINE'S BALL
FEBRUARY 7, 2026
MARIN CIVIC CENTER, SAN RAFAEL

SPRING

GLENWOOD GUILD'S LAST CALL BINGO
TOURNAMENT & DINNER
APRIL 18, 2026
MCGINNIS GOLF CLUB, SAN RAFAEL

SUMMER

BANK OF MARIN 32ND ANNUAL
GOLF TOURNAMENT
JUNE 29, 2026
MARIN COUNTRY CLUB, NOVATO

QUEER LOVE YOUTH PRIDE EVENT & PRIDE PROM
JUNE 2026
REACH ASHLAND YOUTH CENTER, ASHLAND



Learn more at SidebySideYouth.org/events.

