



FORMERLY SUNNY HILLS SERVICES/BAYC

WITH **YOUTH**,
THROUGH ADVERSITY

SidebySideYouth.org

ANNUAL REPORT 2017-2018

At a Glance

2,622 clients
and family members served

24,860 hours
of clinical service provided

21 months
average length of care





Board of Directors

Peter Breen, *President*
Cynthia Gregory, *Vice President*
Howard Schomer, *Secretary*
Jay Cahan, *Treasurer*
Deanna Brock
Barbara Carbone
Dave Egan
Elizabeth Kulavic, *Past President*
Joy Phoenix
Suzie Pollak
Dale Satake
Jacqueline Spielberg

Senior Leadership

Mary Denton, *CEO*
Karen Bischoff, *Director of Property & Risk Management*
Mary Kaye Gerski, *Chief Program Officer*
Rebecca Hathorn, *Executive Director, Alameda County*
Jaimie Knight, *Director of Human Resources*
Noelle R. Moss, *Director of Development*
Stacey Navins, *Chief Operating Officer*
Amber Whiteside, *Director of Communications*
Larry Woodland, *Director of Clinical Practice*

Side by Side
300 Sunny Hills Drive, Bldg. 5
San Anselmo, CA 94960
Tel: 415-457-3200
Fax: 415-456-4679
SidebySideYouth.org

🐦 @sidebyside4kids
📘 sidebysideyouth



LETTER FROM MARY

It has been quite a year!

Like most community-based organizations, we change and evolve in response to the needs of the people we serve, and we've seen many iterations since our founding in 1895.

But 2017- 2018 was a particularly transformative year.

The year kicked off with the July 2017 launch of a brand new program: ReStart, a substance abuse recovery program for teens that offers both residential and afterschool tracks and is based on our San Anselmo campus. We know substance abuse is such a pervasive issue for teens and yet there very few options in the Bay Area, especially for lower income families. ReStart is open to all teens whether Medi-Cal eligible, covered by Kaiser or other private insurance, or private pay. This program is serving such a critical need in the community and we're encouraged by the positive outcomes for clients to date.

This year, we also expanded YouThrive, our Sonoma County-based early intervention program, into Marin. Based on the program's success in Sonoma schools, with measured improvement in students' attendance, grades, and healthy relationships, YouThrive was asked to address critical gang-related issues at San Rafael High School and Davidson Middle School. The program now serves 10 schools in both Sonoma and Marin counties.

The mission of Side by Side is to walk with youth impacted by adversity toward a future with connection and meaning.

Of course, the biggest transformation of all happened just after the fiscal year closed. In July 2018, we launched our new brand Side by Side – a name that so perfectly describes our work today, and yet also the work we've always been doing, since 1895.

Thank you for walking side by side with us on this journey – we truly couldn't do it without you.

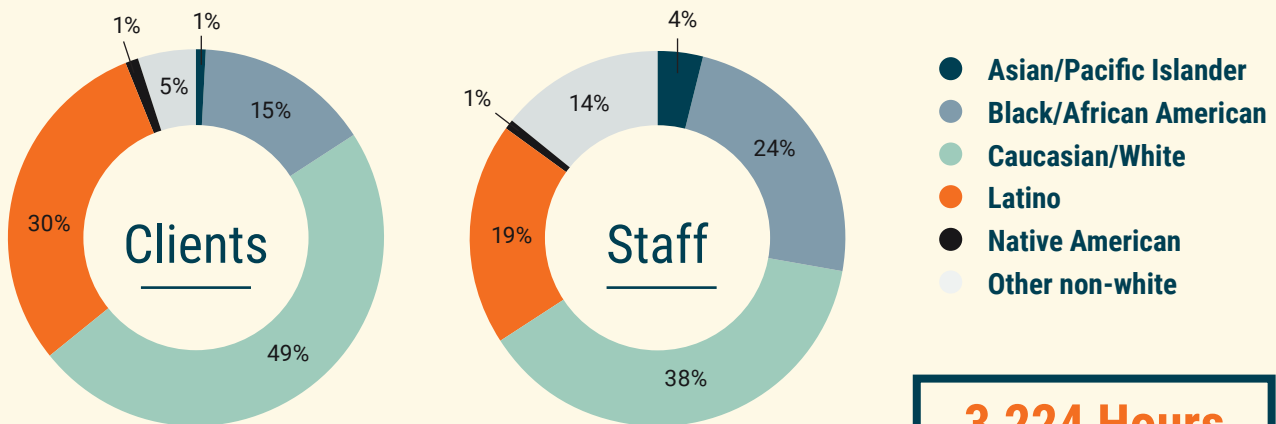
With gratitude,

Mary Denton, CEO



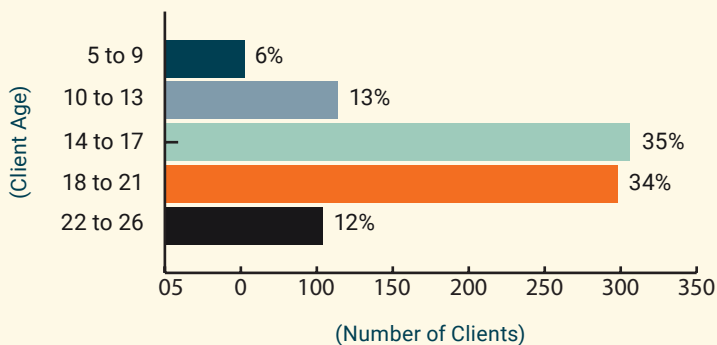
A PORTRAIT OF SIDE BY SIDE WHO WE ARE AND WHO WE SERVE

CLIENTS AND STAFF BY ETHNICITY



3,224 Hours
Staff Training

CLIENTS BY AGE



DIRECT CARE STAFF

26 Clinicians
23 Youth Specialists & Advocates
19 Youth Counselors
6 Teachers & Behaviorists



Clients who are Medi-Cal eligible: **90%**



Clients in foster care: **20%**



Clients in juvenile justice system: **11%**





ABOUT US

At Side by Side we walk with young people impacted by adversity on their unique journeys to heal from trauma, restore resilience, and embrace their own potential.



We provide critical, trauma-informed care that honors the young person's unique needs and strengths to prevent the escalation of dangerous conditions and set them on a positive path. When they feel seen for who they are today, we believe our youth can move with confidence toward a future with meaning and connection. We also engage with family and other supportive adults to build a resilient network for our youth.

Since our founding in 1895 as an orphanage – and through many years as Sunny Hills Services – Side by Side has been at the forefront of best practices in child welfare, working with the most vulnerable youth in our community. Today, Side by Side operates in four counties – Marin, Alameda, Sonoma, and Napa – across the Bay Area, each year reaching over 2,500 youth ages 5-26 and family members with critical services including behavioral and mental health, early intervention, LGBTQ support, substance abuse recovery, therapeutic housing, special education, and youth justice.

OUR SERVICES AND PROGRAMS

BEHAVIORAL & MENTAL HEALTH

Community Counseling (M • A • S • N)

Behavioral challenges, emotional difficulties, and mental health issues often reveal themselves in childhood and early adulthood. These challenges and issues can impact a young person's functioning at home, in school, and in the community. Community Counseling includes a spectrum of community-based clinical services – from individual, group, and family therapy to crisis stabilization and medication management – for clients ages 5-25. We view therapy as a partnership between youth, parents, other caregivers, and the clinician. Together, we help young people identify and understand their feelings, learn effective coping skills, and begin to heal from life's challenges.

Young people and family members served this year: 900
Average length of care: 9 weeks

TAY Space (M)

TAY Space is a community center for youth ages 16-25 (transitional age youth, or TAY) who struggle with mental, behavioral, and/or emotional disorders including bipolar, schizophrenia, anxiety, and depression. Many TAY Space clients also navigate poverty, homelessness, and histories of foster care, incarceration, hospitalization, abandonment, and/or abuse. TAY Space provides comprehensive case management services for 24 full-time clients and is also available to all TAY youth on a drop-in basis. In addition to providing links to education, housing, employment, and other independent living resources, TAY Space functions as a safe place for youth to hang out, study, play games, and access food. TAY Space also facilitates critical social opportunities such as hikes, movies, sports, and cultural events.

Young people and family members served this year: 124
Average length of care: 21 months

A TAY Space Story

“

My mental illness was controlling me and it was humiliating to admit that I couldn't cope with life. Side by Side saved my life. I learned how to cope with the symptoms and most importantly, learned skills to manage my symptoms. I could speak openly about what I'm going through. It was safe, loving and understanding.

”

- Julia, TAY Space

Julia has had a long, tough road, with early trauma and a delayed mental health diagnosis. She has engaged in risky behaviors and has been hospitalized repeatedly. Even as she encounters bumps in the road, she continues to return to the safety and services of TAY Space. Today she is enrolled in college and maintains independent living.



M=Marin County; A=Alameda County; S=Sonoma County; N=Napa County



EARLY INTERVENTION

YouThrive (M • S)

YouThrive is a school-based early intervention program for 11-18 year olds to prevent and divert the escalation of troubling behaviors such as failing grades, truancy, gang activity, and drug and alcohol abuse. The 10-week sessions (during fall and spring semesters) include mentoring, counseling, family support, and workshops on such topics as anger management; responding to peer pressure; and violence and substance abuse. As students demonstrate improved grades, school attendance, behavior, and healthy relationships, they are able to earn day trips (to amusement parks, beaches, etc.) and multi-day excursions (snowboarding, rafting, etc.). In addition to providing powerful incentives, the trips facilitate group bonding and collaboration and expose the young people to nature, often for the first time.

Young people and family members served this year: 363
Average length of care: 12 weeks

Bank of America shares Side By Side's mission to help at-risk youth find personal, academic, and financial stability. The comprehensive, personalized approach of YouThrive, in partnership with school districts and local law enforcement, has a proven track record of higher grades, lower dropout rates, and fewer incidents of violence amongst its student participants – attributes that set our young people up for future success.

- Amy Loflin, Senior Vice President, Bank of America

LGBTQ SUPPORT

Our Space (A)

LGBTQ young people experience significantly higher rates of bullying, intimidation, and abuse at school, home, and out in the world. Add to this poverty, homelessness, and/or involvement in the child welfare or juvenile justice systems – categories in which LGBTQ youth have a disproportionate representation – and it's not a surprise to also find increased risk factors like depression, school drop-out, and self-harm. Our Space provides the much-needed safe space where LGBTQ youth ages 11-23 can express their authentic selves and feel seen, accepted, and celebrated. A vibrant LGBTQ community center with drop-in hours, movie nights, and inter-generational potlucks – as well as a gender-affirming clothing closet and stocked food pantry – Our Space also provides mental health services and case management services. In an effort to expand our impact, Our Space staff facilitate trainings for those working with LGBTQ youth in the community.

Young people and family members served this year: 565

An Our Space Story

“ Having someone who barely knows you open their arms to you and really show interest in getting to know you is one thing to never take for granted. You taught me to be proud of who you are and to never say sorry for it. ”

- Armaine, Our Space

In healing from her own trauma and navigating her own trans identity, Armaine has become a fierce peer leader and mentor for all the young people at Our Space. She is also the emcee of Our Space's annual community cabaret “Queer Love Youth Pride” which will take place on March 22, 2019.



SPECIAL EDUCATION

Irene M. Hunt School (M)

The Irene M. Hunt School (Hunt School) is a day school for 40 students in grades K through 12 with social, emotional, and behavioral challenges that cannot be met in the public school system. The Hunt School provides a therapeutic environment where students develop the capability to regulate their behavior, maintain focus and resilience, and form healthy, trusting relationships – all foundational elements for lifelong learning. The academic curriculum is supplemented with a wide range of enrichment activities, including exposure to music and theater, as well as personalized mental health treatment and other specialized services according to students' individualized education plans. The overarching goal of the Hunt School is to return students to their neighborhood mainstream public school setting, equipped with the skills to thrive socially and academically.

Young people and family members served this year: 207

Average length of care: 3.5 years

“ *I have believed in your school since the 1990's and continue to do so. Keep up the good work.* ”

- Bob Kaliski, Board Chair,
Harbor Point Charitable Foundation

A Hunt School Story

“ *I felt that I didn't belong in a normal school my whole life. And now I've transitioned into a public high school. I never could've thought that it would be possible without you.* ”

- Zach, Irene M. Hunt School

After almost 10 years, and enormous support from the Hunt School staff, Zach has learned to manage his behavioral outbursts and successfully integrated to a public high school full time in fall 2018.



SUBSTANCE ABUSE RECOVERY

ReStart (M)

ReStart is a substance abuse treatment center for teens ages 13-17 that blends recovery, mental health, and daily coping skills. Substance abuse is a critical issue among teens in our community, yet there are few affordable places to get help. ReStart is one of very few treatment centers in Northern California to accept Medi-Cal in addition to Kaiser and other private insurance, making it available to all teens. In order to meet youth at the level of care they need, ReStart offers a 10-bed, residential track providing 30 to 90 day treatment, as well as an afterschool, 20 hours per week track. Treatment plans are customized and include individual and group counseling, family therapy, parent education, adventure therapy, and recreation. Throughout treatment, clients and their families are supported by a comprehensive, multidisciplinary team that also provides case management as well as schooling for residential clients.

Young people and family members served this year: 147

Average length of care: 4.5 weeks

“ *Teenage years can be challenging for most kids and substance abuse among teens is a very real issue. ReStart provides teens with practical tools that will help them deal with their addictions before they spiral out of control in adulthood. Marin is very lucky to have this unique resource.* ”

- Wendy Buscaglia,
Robert and Carol Jackson Charitable Foundation

THERAPEUTIC HOUSING

Esser House (A)

Esser House provides short-term crisis intervention and a highly supportive, safe place to call home for especially vulnerable populations including commercially sexually exploited youth and LGBTQ identified youth who are involved in the foster care and/or probation systems. Staffed 24 hours a day, 365 days a year, Esser House is a co-ed, six-bed group home that serves youth ages 15-19. Supported with case management and mental health services, youth can begin to heal from trauma, practice daily living skills, and prepare for independent living. All of our treatment services are tailored to support each individual's specific needs.

Young people and family members served this year: 23
Average length of care: 18 weeks



Real Alternatives (A)

Real Alternatives offers a continuum of transitional housing opportunities (60 units) for current and former foster youth and/or those on probation ages 16 to 24. Real Alternatives provides a safe environment for participants to take responsibility for their lives in as many areas as possible and develop goals for the future all while having a safety net. Supported by our staff, youth learn to budget and pay bills, shop for groceries and cook, live with a roommate, resolve conflict, pursue an education, and pursue and maintain employment. All Real Alternatives clients have access to mental health services and also are supported in building and/or repairing relationships, learning new coping skills, and managing any mental health symptoms that may get in their way.

Young people and family members served this year: 144
Average length of care: 16 months

“ We are committed to supporting the successful life transitions of homeless and disconnected youth, and see the Real Alternatives program as an invaluable partner in accomplishing our mission to improve the lives of our young people. ”

- Charles Kallgren, President, Five Bridges Foundation

A Real Alternatives Story

“ I came to Side by Side at the age of 16, seeking support and stability from the transitional housing program. I'd previously been through numerous foster placements and schools, but still, I couldn't find a real home – one where I actually felt wanted. You not only helped me overcome hiding the domestic violence in my relationships, but encouraged me to stay motivated while battling homelessness. I have never felt judged by you and you are always there to listen. ”

Timberlie, Real Alternatives

Timberlie rotated through countless foster placements, endured early trauma, and repeated psychiatric hospital stays. Today, Timberlie lives independently, attends college, and is engaged in a construction apprenticeship.

YOUTH JUSTICE

ReFocus (S)

ReFocus works to address the mental health needs of juvenile offenders and their families, and facilitate restorative justice practices that benefit the young person and the community. In collaboration with the county mental health, juvenile justice, child welfare, and education systems, ReFocus creates comprehensive, individualized treatment programs that include support and counseling in the home, school, court, and community. Our staff deliver high levels of supervision and provide the courts with timely, high-quality progress reports on youth and their families. Ultimately, ReFocus ensures the youth receive the mental health services they need to restore healthy functioning and wellbeing.

Young people and family members served this year: 214
Average length of care: 20 weeks

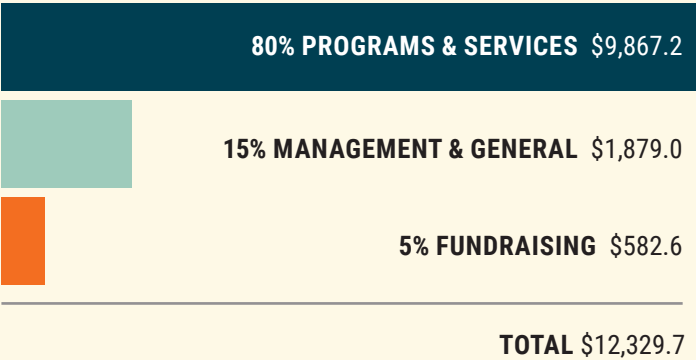
A ReFocus Story

Brenda was admitted to ReFocus after being arrested for drug possession, violating probation, and truancy. She struggled with daily marijuana and alcohol use and, while under the influence, presented with severe risk taking behaviors. Brenda's mother is an undocumented, unemployed, Spanish-speaking monolingual, single mother of five. After a few initial relapses, Brenda made significant progress in consistent school attendance, maintaining good grades, completing community service hours, gaining employment, and maintaining sobriety. When she presented her restorative project in court, in which she shared about her goal of becoming a nurse, there was not a dry eye and the judge dismissed her from probation and graduated her from ReFocus.

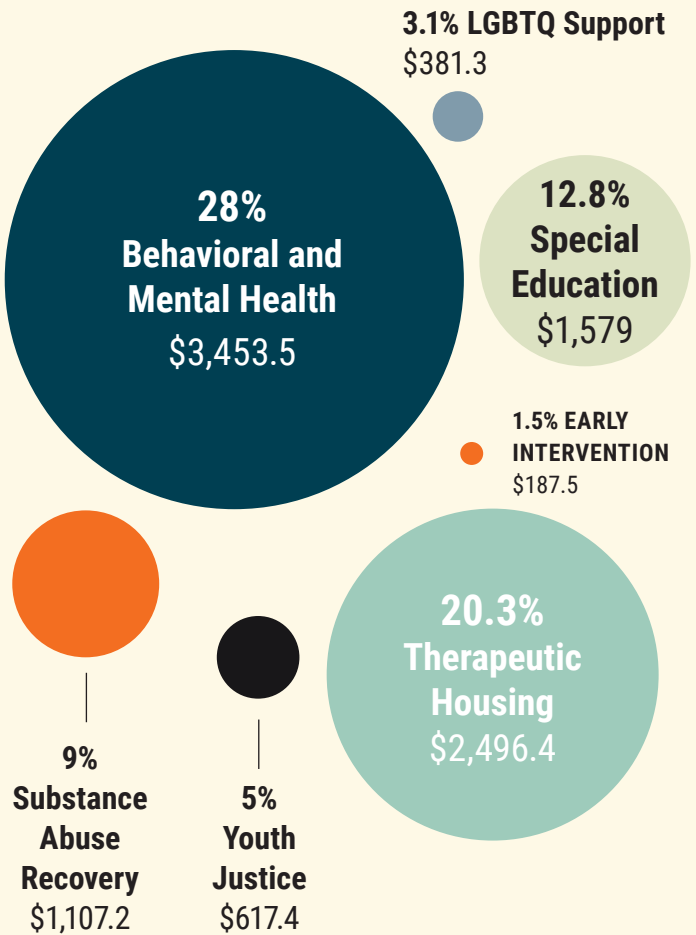


M=Marin County; A=Alameda County; S=Sonoma County; N=Napa County

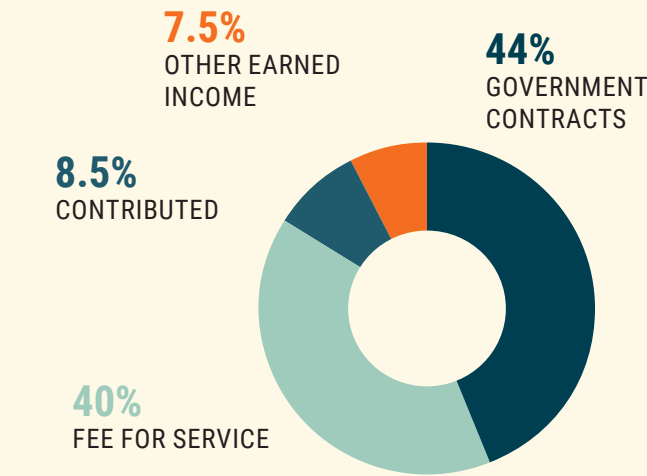
EXPENSES BY TYPE (% and 000's)



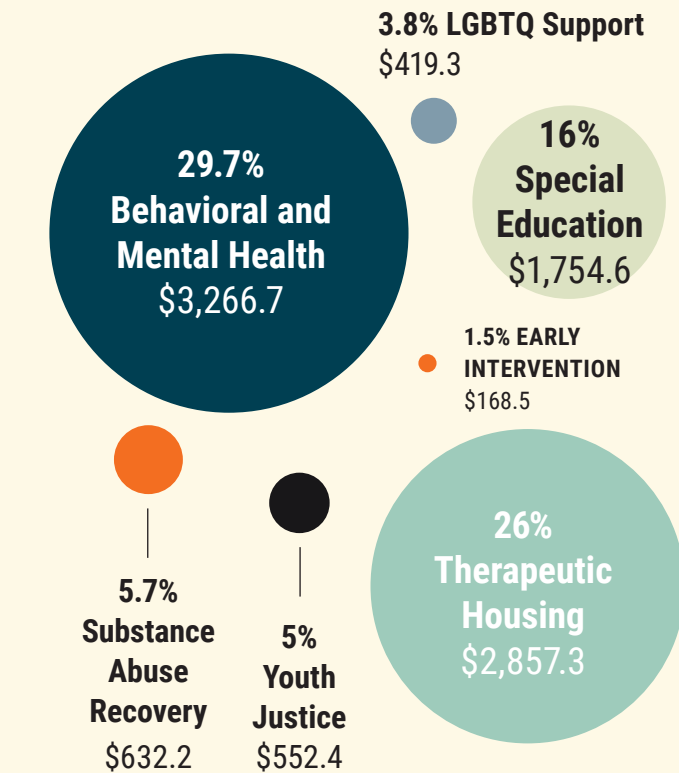
EXPENSES BY SERVICE AREA (% and 000's)



REVENUE BY TYPE (%)



REVENUE BY SERVICE AREA (% and 000's)



FINANCIAL POSITION (000's)

Total Assets
\$9,049.2

Total Liabilities
\$3,049.4

Total Net Assets
\$5,999.8

THANK YOU FOR JOINING SIDE BY SIDE ON OUR JOURNEY.

The following generous supporters gave Side by Side cash gifts between July 1, 2017 and June 30, 2018. Each and every gift enables us to walk with the Bay Area's at-risk young people on their individual journeys and provide the safe space most of them have missed in their lives. **Thank you.**

\$50,000 +

Walter S. Johnson Foundation

\$25,000 - \$49,999

Elizabeth E. Bettelheim Family Foundation
Five Bridges Foundation *
HEDCO Foundation *
The Robert & Shirley Sanderson Fund of the Marin Community Foundation **
The Raymond & Ricki Syufy Charitable Gift Fund *

\$10,000 - \$24,999

Community Foundation Sonoma County
Fred Craves Family Foundation
Rita Degan Survivor's Trust **
Carl Gellert & Celia Berta Gellert Foundation
GGs Foundation
Herbst Foundation *
Horizons Foundation
Mr. and Mrs. J. Patrick Hunt **
Marin Community Foundation **
Relevant Wealth Advisors, LLC *
George H. Sandy Foundation **
Jacqueline & David Spielberg **
Bernard E. & Alba Witkin Charitable Foundation

\$5,000 - \$9,999

AHS Foundation **
Bank of Marin **
Kira & Bill Beer
Albert & Elaine Borchard Foundation
Lydia & Tony Cameron **
Center for Volunteer & Non-Profit Leadership of Marin **
County of Marin Community Service Fund
Kristen d'Offay
Filice Insurance Agency
FIS *
Ghilotti Construction Company **
Harbor Point Charitable Foundation
Heffernan Foundation *
Sandy Jacobs & Scott Nikas
Shannon & Taggart Matthiesen
Mr. & Mrs. David Metz
Christopher Perez
Dale Satake
Glenn & Betsy Snyder

Speedway Children's Charities / Sonoma Raceway **
SpotOn
Wells Fargo **
Kathy & John Woldrich *
Zach Fund at East Bay Community Foundation **

\$2,500 - \$4,999

Arntz Family Foundation **
Baldwin Production Services *
Bank of America Charitable Foundation *
BioMarin Pharmaceutical, Inc.
Bon Air - Greenbrae
W. Bradley Electric, Inc. *
Shelley & Jay Cahan
Mendy Calegari
Barbara Carbone & Gregg Lyman *
The Covington Fund *
Mary Denton & Monte Deignan *
Mr. & Mrs. David Egan **
Exchange Bank *
Andre Hakkak & Marissa Shipman
Linda & Marshall Jainchill
Sandy Terrado Janachowski & Stephen Janachowski **
KCM Investment Advisors
David Kostuik & Jessica Lewis
KPMG *
Leon Lee
Ms. Elisabeth Levy **
Susan MacMillan
Marin Roto-Rooter
Martz Sanitary Service **
Martz Accountancy Corporation
Kathlyn McPherson Masneri & Arno P. Masneri Fund **
Mr. & Mrs. Brian McLeran
Bruce Raabe & Sara Wardell-Smith *
Marilyn & Harvey Rich *
Robison Family Foundation **
Shelley & Company
Erin & Michael Shippey
Rob Thull *
Marco A. Vidal Fund *
Carrie & Andrew Weinstein

\$1,000 - \$2,499

Lisa & Joel Bakamis
Mr. & Mrs. Seth Barad *
Donna & Ted Bartlett
Battaglia Family Charitable Fund **
Baughman/McMillan Family Fund *

Belvedere Fund **
Peter & Ione Breen **
John Castro
Mr. & Mrs. Mike Cinelli *
Donald O. & Ronald R. Collins Fund
Gus & Mary Jane Constantin **
The Cornell Family Charitable Fund
Julie & Chris Dolan
Erickson Family Fund **
Fenwick Foundation *
Dr. & Mrs. Charles Fischer *
Mr. & Mrs. Gary Frugoli **
Mr. & Mrs. Matthew Gillam
Jennifer L. Gotti **
Nannette Griswold **
Will Hawthorne & Melanie Deitch
Mr. & Mrs. Steve Hays
HC&M Commercial Properties, Inc.
Nicole Henneuse *
Michael Higgins & Stacy Lauer
Deborah Hoke Smith & Richard Smith *
Wendy & Jay Huck
Dana & Jeff Hyman
Kaiser Permanente Community Benefit Program
The Kawaja Family
Keefe, Bruyette & Woods
Mike Ketchum
Jim Kimball
Elizabeth Kulavic *
Terri Kwiatek *
Lateef Investment Management *
Mr. Frank Lindh & Mr. Brian Johnson *
George Lucas Family Foundation
Robyn Lunning
Stuart Lum *
Jennifer & Timothy Lynn
Carole & Bruce MacPhail **
Marin Charitable Association **
Tom Martz *
Ms. & Mrs. Ed McDermott
Mr. & Mrs. Robert McLennan *
Mara C. Meisner & Davy Crockett *
Montecito Market Place Associates **
Shane Orlick & Courtney Minisce
Pacific Union International Real Estate
Mr. & Mrs. James Phoenix **
Edward Pollak Family Fund **
Republic Family of Companies
Schultz Foundation **

Amy Storek
Jack Sunday
Sutter Health
Barbara Ward **
Westamerica Bank **
Mr. & Mrs. Darryl Woo **
Mr. & Mrs. Brad Zampa

\$500 - \$999

Anonymous
Daniel Aguilar
Alten Construction **
Mr. & Mrs. Eric Axelsen
Marc Barasch & Jenny Smith
Gail Bateson
Mr. & Mrs. Henry Berg
Lani Blue Taylor & William Taylor
Boo Boero *
Jayne Brodie
Ramsay Brown
Mr. & Mrs. John Buscaglia
Mr. & Mrs. Hugh Cadden, Sr.
Cardiovascular Associates of Marin & SF Medical Group, Inc. **
Mr. & Mrs. Bill Caroli *
Barbara Chemotti
Mr. & Mrs. Russell Colombo
Col. William Cope *
Marita & Kevin Daly **
Mr. & Mrs. Andrew Dick
Mr. & Mrs. George Eichleay
Mr. & Mrs. Ken Ellingsen **
Robin & Barry Estes
Mr. & Mrs. Glenn Fama **
Greene Building Company, Inc. **
Robert H. Greene Real Estate
Guardsmen *
Jim Hale
Lillian Hames
Mr. & Mrs. Ray Hoffman, III *
Hoffman Development Co. **
Mr. & Mrs. Joe Hunt **
Italian Street Painting Marin
J'Amy Tarr Outerwear
Tom & Diane Johnston **
Terry & Bob Keyes **
Marjorie & Hal King
Mr. & Mrs. Spencer Lee
Ed Maiello
Marin Lodge No. 200 I.O.O.F. **
Tina & John Mehan *
Cynthia Mia Mitchel Ludlow
Kate & Wesley Mitchell **
Network for Good *

DONORS

Mr. & Mrs. Marc Paletta
Linda & Michael Perrella **
Mr. & Mrs. Tom Pitts **
Mr. & Mrs. Douglas Pringle *
Darcy & Patrick Quinn
Emelia Rallapalli
Alex & Scott Ray
Nancy & Richard Robbins **
Gale Rossi
Royal Grand Ducal Council of
Alameda/Contra Costa Counties
Howard Schomer &
Kimberly Roach
Mike & Jennifer Shepard *
Julie & Al Stoll
Mary Sylla & Lynn Murphy
Rebecca & Thomas Sylla *
Richard Ugarte
Walmart Foundation
James Wandrey *
Wells Fargo Community Support /
United Way Campaign
Western Espresso Coffee & Tea
Malcolm Kenneth Whyte III &
J. McDade-Whyte Fund
Candy & Brian Wilson *
Mr. & Mrs. Mark Zavarin
Jane & Mark Zuercher

\$350 - \$499

Anonymous
Mr. & Mrs. Dale Aman
Karianne & Seth Atwell
Ms. Betina Baumgarten
Al Baylacq
Cindy & Bernie Benson **
Lisa Bernardi
Mr. & Mrs. John Bessolo III *
Black Rabbit Trading Company
Mr. & Mrs. Matt Blickman
Deanna Brock & Daniel Freeman
Joan & Michael Buckley Fund of
Community Foundation Sonoma
County
Michael Budd
Justin Burt
Readie Callahan
Jeanne Capurro *
Chevron Matching Gift Program *
Mr. & Mrs. James Christensen
Susan & Nicholas Clark **
Mr. & Mrs. John Craemer
Lawrence Livermore National
Laboratory
Mr. & Mrs. Jon d'Alessio **
Lois de Banzie
Ms. & Mrs. George Deukmejian
Farmburger Red Hill, LLC
Debbie Fernandez
James Findlay *
Matthew Fine
First National Bank of Northern
California
Mr. & Mrs. John Fradelizio *
Mr. & Mrs. John Francis
Israel Frey Group, LLP
Karen Garbarino
Cindy Garcia
Lynn Gray
Mr. & Ms. Mark Halmi

Hennessy Advisors, Inc.
Mark & Dale Hillard **
Mr. & Mrs. Bill Hogan
June & Robert Holmberg
Robert Houston
Mr. & Mrs. Chuck Hufford **
William W. Jones **
Charles Kagan *
Sabrina Karpa-Wilson
Shauna & Tom Keenan **
Lynn Larsen
Mr. & Mrs. James Lazor, Sr. **
Lindskog Family Investments
Patrick London *
Charles Louderback &
Miranda Wagner
Jan Maisel, M.D. **
Mr. & Mrs. Charles McBride *

Thompson Builders Corporation
Ms. F Thomson
The Tilles Family Charitable Trust
Todd & Katie Traina
Steve & Jackie Tulskey **
Paul & Patricia Verriere *
Charity Wagner & Warren Lanier
Michael Webb & Patricia Mullen *
Mr. & Mrs. Mordechai Winter *
Geoff Wood *

\$100 - \$249

Anonymous (2)
Alameda County Leather Corps
Debra Allen
Autodesk Foundation Employee
Engagement Fund
B.A. Lamb, Inc.

Joan Dauria
Mr. & Mrs. Tony Davary
Marion Davis **
Mr. & Mrs. David Deetken **
Terry & Paul Descalso **
Tosca DesRosiers *
Dickson Ranch *
Judy DiGiorgio
Elaine Dipalma *
Lisa Doran
Ben Durham
Polly Elkin
Steve Falk
Ruth Falkenberg **
Audrey Fancy
Dawn Fishbein
Dale Fousel & Deborah Everett *
Dianne Fowler **
Mr. & Mrs. John Gladish *
Mr. & Mrs. Geoffrey Goddard *
Robert Gollan *
Grace Gonzalez
Ms. Frances Gotti **
Mr. & Mrs. George Greco *
Cynthia Gregory
David Gregory **
Nancy Grossi
Paul & Debra Guerin **
LaKeitha Hall
Ingrid Hamann
Mr. & Mrs. Mike Hatfield
Melissa & Colin Henne
Mr. & Mrs. Robert Hennessy
Diana & Jeffrey Hill **
Sharon Hunsaker Adams
Mr. & Mrs. Stephen Isaacs *
Constance Jones
Kaiser Permanente Community
Giving Campaign
Keegan & Coppin Co., Inc. *
Mr. & Mrs. Stuart Keirle **
Mr. & Mrs. Stephen Kimball *
Gary Kostow
Ann Lahey
Briggs Lathrop
Bruce Leitstein *
Local Independent Charities
of America *
Kim Lofrano
Mr. & Mrs. Paul Macomber
Mr. & Mrs. James Masson, Jr. *
Elizabeth Mathern *
Carol Matthys
Mr. & Mrs. John McCall **
Purple Lady/Barbara J. Meislin
Fund **
Mr. & Mrs. Frank Minoia
Lois & Bruce Moody **
The Thomas & Susan Moore Family
Fund of the Ayco Charitable
Foundation **
Noelle R. Moss
MSM, Inc.
Kathleen Mullen *
Cynthia Murray **
Lilian Murray *
Dennis Neary *
Kenneth & Anne Nelson **
Brian Nolan
Mr. & Mrs. Frank Noonan



Mr. & Mrs. Toby McGowan
Mr. & Mrs. William Nunan
Joe O'Hehir & Vicki Masseria
Jerry & Becky Oken **
Orinda Community Church
Rev. Betty Pagett **
Melba Palmer **
Mr. & Mrs. Richard Parker *
Jamie Patton
Maria Pitcairn **
Pizzalina
Point Reyes Farmstead Cheese
Company
Alexandra Ray Art Advisory
Mr. & Mrs. Rick Riede
RSM US LLP
San Rafael Pacifics Baseball Club
Christine Scott **
William Selmi
Mr. & Mrs. Charlie Sheppard
Carole & John Shook **
Mr. & Mrs. James Smith *
Kevin Smith
Scott Stone

Mr. & Mrs. Mario Baggiolini
Sidney F. Baker **
Luigi Baker **
Mr. & Mrs. Robert Beedle
Mr. & Mrs. David Bekowich *
Michael Bernstein
Deborah Beveridge *
Claudette Bidgood **
Karen Bischoff & Ed Boisson **
Mr. & Mrs. Peter Brajkovich **
Mr. & Mrs. Jesse Brown
Canard Vineyard
Joan & Robert Capurro **
Marlein Carballosa
Sue & Joe Carlomagno **
Claudia Carlson & Jack Brenneman **
Diane Carr
Lea Casini
Mary & Philip Chigos
Richard Chong
Alice Cogliandro **
Leslie & Richard Cohen **
Mr. & Mrs. Alan Collenette
Amanda Cooper

Mr. & Mrs. Thomas Obletz
 Mr. & Mrs. Don O'Brien
 Mr. & Mrs. Dennis O'Neill *
 Michael James O'Reilly &
 Kathleen Auld
 Stephanie Perron & Jess Wallace
 Alan & Helen-Marie Petersen **
 Mr. & Mrs. James Phalon *
 Robert C. Placak &
 Associates, Inc. **
 Mr. & Mrs. Denis Polan **
 Prandi Property Management **
 Rainbow Grocery Cooperative
 Mr. & Mrs. Charles Raven
 Theresa Reyes **
 Crystal Roman
 Mr. & Ms. Ronnie Rones
 Tracey Ruiz
 Mr. & Mrs. Dennis Sarni
 Mrs. R. E. Saxton **
 Mr. & Ms. Jerome Scharf
 Stu Schneider **
 Sandra Schomer
 Oded Schwartz & Ruth Rosenthal
 James Scott
 David Shapiro
 Peter J. Shaw **
 Carole & Douglas Sheft **
 Mercedes Shinohara-Taylor
 Richard & Rebecca Smith
 Giving Fund *
 Cheryl Stern
 Corby Sturges
 Mr. & Mrs. Robert Taylor *
 Sally S. Taylor **
 Mr. & Mrs. Dale Tietz
 Judy Torrison *
 Toss Designs
 United Markets **
 Dove Vallender
 Peggy Vaughan
 Robert Verhoeff
 Lisandro Villanueva
 Mr. & Mrs. David Walker *
 Barbara Wambach
 Clarence Watson, III
 Christina Wildlake
 Judith Wilson **
 Wing S. Wong *
 Jim Woolwine
 Mr. & Mrs. Todd Ziesing

Under \$99

Anonymous (3)
 Suzanna Abbott
 Jeanne Adams
 Merry Alberigi *
 Pam Anderson
 Mr. & Mrs. Kent Angerbauer
 Sharlyne Balano **
 Mr. & Mrs. Nathan Ballard
 Bank of the West *
 Theodore Elliot Banks
 Peter McLaughlin & Lisa Barry
 Dr. & Mrs. Joseph Basso **
 Vivian Bauer
 Vesa Becam
 Lori Bernard
 Mr. & Mrs. Ronald Bernardini *
 Alice Berry

Elaine & Hy Binger **
 Faye E. Blatt **
 Ashley Bock
 Mr. & Mrs. Jim Bogema **
 Melissa Bolandi Silva
 Bryan Boudreaux
 Mary Bramblett
 Helen Bredderman *
 Lynn Brown
 Kim Burnett
 Burrous Brothers Company *
 Dorothy & Shepherd Burton **
 Andrea Cabral
 Mr. & Mrs. Lido Cantarutti *
 Mr. & Mrs. Frank Card *
 Bonnie Casassa
 Ellie Weiser Chamberlain &
 Keith Chamberlain



Citibrokers Real Estate Co.
 Cynthia Clark
 Christine Coffey-Puccini
 Winifred Coleman
 Catherine Coles
 Mr. & Mrs. Stephen D. Combs **
 Comforts **
 D. Connor
 Jennifer Conroy *
 Mr. & Mrs. Jerry Current **
 Trang Dang
 Stephen Daniels
 Alice De Costerd
 DeLeuse Jewelers **
 Chintan Dholakia
 John Donahue
 Donate for Charity *
 Beth Drummey
 Dennis Elder
 Joan Emerson *
 Jorge J. Enriquez *
 Mollie Eschen **
 Kim Feigon
 Mr. & Mrs. R.F. Ferguson

Adrian Fernandez-Del-Campo
 Colette Fujimoto
 Oscar Garcia
 Scott Gates
 The Gibson Family **
 Kevin Gish
 Giving Assistant
 Jacquelyne Gorton
 Constance Govi **
 Jefferson & Shirley Graves **
 Richard Griffith **
 Mr. & Mrs. Rudy Hassid
 Jena Hayashi
 Remington Heatley
 Janet Heley Ekberg
 Mr. & Mrs. Robert Henry **
 Mr. & Mrs. Les Herold
 Henry Hopkins *

Mr. & Mrs. Joseph Maniscalco **
 Barbara Maricle *
 Marianne Matthews *
 Carol Mayer *
 Casey Mazzoni
 Scott McAdams
 Amber McClure
 McPhail Fuel Company
 Janet L. Mettner *
 Barbara Metzger **
 Angi Meyers
 Karen Miao
 Mr. & Mrs. Michael Mirsky
 Jim & Janet Mitchell **
 Sally Mittelstaedt
 Mr. & Mrs. Bill Mittendorf
 Laura Mizzen
 Julia Morgan School for Girls
 Nathaniel Morris &
 Stephanie O'Byrne Morris
 Mr. & Mrs. Donald Munakata **
 Patrick Murphy
 Matthew Nachtman
 Ram Nanduri
 Mr. & Mrs. Isidore Natsios *
 Bea Newhall **
 Larry Olin
 William Otton
 Mimi Park
 Kathleen Parker *
 Roger Parks *
 Maggie Paula
 Janet Pawlan **
 Elizabeth Peters
 Lisa Phan
 Matthew Pielert
 Michael & Stephanie Poley
 Barry Power *
 Mr. & Mrs. Gregory Pryor
 Elizabeth Purvis
 Julian Quasha
 Julie Quater
 Luba Rassouli
 Alejandro Rodriguez
 Mr. & Mrs. Richard Roman *
 Debra Rose *
 Sanjay Roy
 David & Tonia Rubin
 Barbara Ruffino
 Mr. & Mrs. Joseph P. Russoniello **
 Shannon Ryan
 Dr. & Mrs. Brian Salmen *
 Mr. & Mrs. Paul Sasse **
 Brian Schelter
 Mr. & Mrs. Raymond Schmitt **
 Norman & Alice Schoenstein **
 Andrea Schultz
 Vrinda Shah
 Derek Smith
 Janet Smith *
 Michael Souders
 Lois Spellman **
 Joseph Stein
 Matthew Storms & Anna Rascon
 Jacqueline Sue **
 Mr. & Mrs. Richard Sullivan **
 Craig Sundstrom
 Jeff Tanenbaum
 Mitchell Taylor
 The Robert S. Liss Revocable Trust

DONORS

Allen & Donna Thomas *
Virgil's Sea Room
George Wagner
William Walton
Mr. & Mrs. Michael Ward
Trang Warden
Jeffrey Warren
Jay Warren
Jim Wattson
Lei Ann & Brad Werner **
Allison White
Amber Whiteside Favetti
Jeffrey Wilmore
Jeff Wishner
Joan M. Wright **
Scott Zetterquist

GIFTS IN HONOR OF

Elizabeth Kulavic
Suzie Pollak
Howard Schomer

GIFTS IN MEMORY OF

Helen Bateson
Zona Bauer
Carol Lund Daniels
Miyuki Denton
Louis DiGiorgio
Lawrence F. Doyle
Devora Harrison
Aaron Jones
Sally Quist
Arleen Russell
Tom & Dolly Torrison
Robert O. Vaughan
Jane Elizabeth Vorhees

LEGACY GIVING SOCIETY

Side by Side's Legacy Society honors those individuals who have thoughtfully included our agency in their estate plans. By designating a legacy gift to Side by Side, the services and programs that they support will continue to touch the lives of our clients for years to come.

Anonymous (3)
Kathryn L. Black & Todd Sparks
Virginia Bertelsen
Sue Clark
David M. Hellman
Diana & Jeffrey Hill
Elizabeth Johnson
Russ & Kathy Ketron
Carole & Bruce MacPhail
Nora J. McCallie
Mr. & Mrs. Richard K. Robbins
John B. Robinson
Robert & Shirley Sanderson
Mary Tash
Cathy Tucker
Charles Walters

GUILD MEMBERS

The Guilds of Side by Side have formed the backbone of support for our agency for decades. From community fundraisers to the Grape Festival to birthday treats for the Irene M. Hunt School, the Guilds are

integral to our organization. We are honored to recognize the members of the Terra Linda and Glenwood Guilds below for their advocacy and commitment to the young people that we serve.

GLENWOOD GUILD

Gill Keirle, *President*
Linda Christensen
Sue Clark
Margaret Erickson
Ruth Falkenberg
Patti Faraday
Carole MacPhail
Barbara Metzger
Sue Moore
Anne Nelson



Bea Newhall
Joy Phoenix
Maggie Polan
Terrie Reyes
Jan Smith

TERRA LINDA GUILD

Kathie Swart, *President*
Joyce Anderson
Kathy Barrass
Helen Dennis
Connie Govi
Pat Moezzi
Vivi-Anne Regstad
Kay Schmitt
Lily Soto
Lois Spellman

GOVERNMENT CONTRACTS & GRANTS

Alameda County Department of Child & Family Services/Youth Acceptance Collaborative
Alameda County Behavioral Health

Care Services
California Department of Education
Contra Costa Health Plan
Contra Costa County Health Services
County of Marin Behavioral Health & Recovery Services
County of Santa Cruz Health Services
County of Sonoma Behavioral Health
Kaiser Permanente – Northern California
Napa County Health & Human Services
San Mateo County Behavioral Health & Recovery Services
Sonoma County Sheriff Department

IN-KIND DONORS

101 North Brewing Co.
101 Surf Sports
Alexandra Ray Art Advisory
Anyon Design
Artisan Wine Imports
Ashley Morgan Designs
Balletto Vineyards
Bank of Marin
Bardessono Hotel & Spa
Bare Snacks
Leslie & James Barker
Bay Area Discovery Museum
Bayonet & Black Horse Golf Courses
Belcampo Meat Company
Berkeley Repertory Theatre
Karen Bischoff & Ed Boisson
Bloodlines Wine
Blue Waters Kayaking
Book Passage, Inc.
Bradley, Curley, Asiano, Barrabee & Gale P.C.
Peter & Ione Breen

Buena Vista Winery
Shelley & Jay Cahan
Cal-Mart Supermarket
Mr. and Mrs. Hugh Cadden, Sr.
Lydia & Tony Cameron
Canard Vineyard
Capital Genealogy
Barbara Carbone & Gregg Lyman
John Castro
Chanticleer
Chappellet Cultivation
Blaire Chaput
Clif Bar & Company
Clos Du Val
Comforts
Cooley LLP
Mary Denton & Monte Deignan
Donna Dernier
Kristen d'Offay
Farm Shop Marin
Joyce Feeney
Ferrari-Carano Vineyards & Winery
Fine Arts Museums of San Francisco
Folkmanis Puppets
Gary Farrell Vineyards & Winery
Gaspare's Pizzeria
Mary Kaye Gerski
The Giampaoli Family
Golden Gate Bridge Highway & Transportation District
Jennifer L. Gotti
Elza Gross
Guayaki Yerba Mate
Hafner Family Vineyards
Half Day Cafe
Harris' Restaurant
Rebecca & Ray Hathorn
Denise & Robert Helstrom
Hint Inc.
Hog Island Oyster Co.
Hotel Shattuck Plaza
Imogen Skin Care
Indian Springs Resort & Spa
Indian Valley Golf Club
International Orange
Sandra Jacobs & Scott Nikas
Jacuzzi Family Vineyards
J'Amy Tarr Outerwear
Jason's Restaurant
Julia Adams Dance
Kids Bike Lane
Lagunitas Brewing Co.
Larson Family Winery
Josh Leonard & Fanshen Thompson
Nina Leva Photography
Candrian Locati
Little River Inn
Ludwig's Fine Wine & Spirits
Luther Burbank Center for the Arts
Maas Clinic
Susan MacMillan
Grace Manning
Marin Ballet
Marin Brewing Company
Marin Dance Theatre
Marin Independent Journal
Marin Magazine
Marin Shakespeare Co.

Marin Subaru
Marin Symphony
Marin Theatre Company
Marine Mammal Center
Marinitas
Shannon & Taggart Matthiesen
Mauritson Family Winery
Mara C. Meisner & Davy Crockett
Marian Mayeda
The Melting Pot
Janet Mettner
Bonnie Meyer
Michael Merrill Design Studio
Dave Mollitor
Jacqueline Mollitor
Nancy Mollitor
Monterey Bay Sailing
Monterey Peninsula Foundation
Monterey Symphony
Morton & Bassett Spices
Moylan's Brewery & Restaurant
Navitas Organics
North Bay Business Journal
North Coast Brewing Co.
Northbay Vending
Naomi Perl
Perry's
Mr. & Mrs. James Phoenix
Philharmonia Baroque Orchestra
& Chorale
Pixar Studios
Platypus Tours Ltd.
Janet Pollack
Posie's Ice Cream
Post Ranch Inn
Presidio Bowling Center
Marilyn & Harvey Rich
Ross Valley Players
Russian River Vineyards
Safeway, Inc.
Salito's Crab House
San Francisco Giants
San Francisco Symphony
Robert & Shirley Sanderson
San Rafael Pacifics Baseball Club
Dale Satake
Savage & Cooke
Saylor's Restaurant & Bar

Howard Schomer &
Kimberly Rochat
Schumacher Photography
Kendra Scott
Sea Trek Kayak
Selby Winery
Serpico Landscaping, Inc.
Gordon Shank
Shelley & Company
Kylie Shellstrom
Renee Sheppard
Shineology Car Washes
Marissa Shipman
Jay Shuster
Six Flags Discovery Kingdom
SkinSpirit Skincare Clinic & Spa
Sarah Smith
Sol Food
Soul Cycle
Soulstice Mind & Body Spa
Jacqueline & David Spielberg
Speedway Children's Charities /
Sonoma Raceway
Sports Basement
Steinbeck House Restaurant
Susie Cakes
Raymond & Ricki Syufy
Taylorblue Design
Three Sticks Wine
Three Twins Ice Cream
Tony Llamas
Toss Designs
Trattoria Contadina Restaurant
Tutu School
United Markets
Richard Valle
Vanda Floral Design
Vineyard Vines
Charity Wagner & Warren Lanier
Warm Wishes
Amber Whiteside Favetti
Whole Foods Market
Wildfox Restaurant
Janet Wilks
Mr. and Mrs. Frank Williams
Candy & Brian Wilson
Geoff Wood

HOLIDAY GIVING COMMUNITY PARTNERS

The following generous community partners help make sure that every Side by Side client has a gift for the holidays.

Book Passage
Marin Country Mart
Mill Valley Middle School
Sausalito Nursery School
Secret Santa of Sonoma County/
Volunteer Center of Sonoma County

VOLUNTEERS

Side by Side gratefully thanks the volunteers and organizations listed below who have spent countless hours helping with our 2017-18 events, office administration and program support.

Pam Anderson
Lisa Bakamis
Byrd Baldwin
Carlos Basurto, Windsor Chief
of Police
Betina Baumgarten
Jamie Behrendt
Annette Bekowich
Cecilia Berardi
Lisa Berardi
Lisa Bernardi
Darlene Blackman
Deanna Brock
Jayne Brodie
Ashley Brown
Eva Brown
Justin Burt
Shelley Cahan
Cakes for Kids
Mendy Calegari
Lydia Cameron
Ellie Chamberlain
Kary Chendo
Cheryl Cinelli
Alice Cogliandro
Community Bakers, Mathilde
Caindec & Jessica Jones

Stephen Crutchfield
Kristen d'Offay
Extra Food
Negar Farrokhnia
Rachel Ferrier
Kelsea and Fitz Fitzgerald
Jennifer Gotti
Deborah Hillboe
Deborah Hoke-Smith
June Holmberg
Sandy Hufford
Sandra Jacobs
Judy Keith
Elizabeth Kulavic
Barbi Loy
Robyn Luning
Jennifer Lynn
Marin Humane
Elizabeth Matthern
Shannon Matthiesen
Hilary McGinnis
Cherri McGowan
Sen. Mike McGuire
Mara Meisner
Max Morris
Douglas Murray
Maggie Paula
Joy Phoenix
Sam Rafael
Alex Ray
Jasmine Reinhardt/
Marin County Parks
Lisa Rueff
Sam's Anchor Café
Donna Schafer
Serpico Landscaping
Carole Shook
Jacquie Spielberg
Julie Stoll
Amy Storek
Tricia Tanoury
Charity Wagner
Rich Walcoff
Ken Wanlass
Carrie Weinstein
Janet Wilks
Sarah & Dayman Wilson
Izzie Witchel
Jeremy Yu
Deena Zeiden

WAYS TO GIVE SidebySideYouth.org/ways-to-give



Monthly Giving Switch to sustained monthly giving via credit card to provide Side by Side with regular support we can count on.



Legacy Giving Leave a lasting legacy by designating a future gift through your estate plan.



Company Match Increase the value of your gift by taking advantage of your workplace's matching gift program.



EScrip Raise money for Side by Side each time you shop at Woodlands Market, Oliver's or other local grocery stores!



Stock Gifts of appreciated securities can be an easy way of making your charitable dollars go further.



Vehicle Donations Have an old car taking up space in your driveway or a need to free up your boat slip? Donate it to Side by Side!



Give In Kind Contributions of donated goods and services help stretch our program budgets that much further.



Online Donations You can make a gift securely online at SidebySideYouth.org anytime, day or night.



300 Sunny Hills Drive, Bldg. 5
San Anselmo, CA 94960
Formerly Sunny Hills Services/BAYC

Return Service Requested

Non-Profit Org.
U.S. Postage
PAID
Petaluma, CA
Permit #138



Come Celebrate Alongside Us This Year

25TH ANNUAL GLENWOOD GUILD BINGO DINNER

March 16, 2019

A fun night of BINGO at McInnis Park Club in Novato with one of Side by Side's longstanding guilds.

QUEER LOVE YOUTH PRIDE

March 22, 2019

One mega-night of LGBTQ youth brilliance, performance, and celebration at Humanist Hall in Oakland.

¡SALUD, SONOMA YOUTH!

March 28, 2019

A festive affair of craft cocktails and paella at Griffo Distillery in Petaluma that benefits our Sonoma County programs.

SHINDIG

May 9, 2019

Held at the Starline Social Club in Oakland, this event highlights the talents of our Alameda County youth and supports our East Bay programs.

25TH ANNUAL BANK OF MARIN GOLF TOURNAMENT

June 24, 2019

June wouldn't be the same without this signature tourney at the exclusive Meadow Club in Fairfax!



REACH FOR THE STARS GALA

Early Fall 2019

Watch for more information about our biggest fundraiser and best party of the year!

To purchase tickets, become a sponsor, or for more information about any of these events, visit SidebySideYouth.org/events