

WITH **YOUTH,**
THROUGH ADVERSITY

ANNUAL REPORT 2019-2020 At a Glance



1,691
clients and family
members served

14,249
hours of clinical
service

103,242
hours of therapeutic
classroom time

928
hours of peer
support groups



Board of Directors

Howard Schomer, *President*

Scott Nikas, *Vice President*

Dale Satake, *Treasurer*

Wendy Buscaglia, *Secretary*

Deanna Brock

Barbara Carbone

Josh Corren

Elizabeth Kulavic

Joy Phoenix

Ricki Syufy

Rich Walcoff

Agency and Program Leadership

Mary Denton, *Chief Executive Officer*

Karen Bischoff, *Director of Property and Risk Management*

Benjamin Edoukou, *Director of Finance*

Rebecca Hathorn, *Regional Director, East Bay Programs*

Noelle R. Moss, *Director of Development and Communications*

Tiffany Vigil, *Director of Human Resources*

Larry Woodland, *Director of Clinical Practice and Regional Director, North Bay Programs*

Jolene Yee, *Director, Irene M. Hunt School*

Diego Basdeo-Fitzgerald, *Program Manager, Our Space*

Jessica Johnson, *Clinical Director, Community Counseling East Bay*

Adrian Maldonado, *Program Manager, YouThrive*

Denisse Mendoza, *Program Manager, Community Counseling North Bay*

Bernice Saavedra, *Program Director, Real Alternatives*

Laura Taylor, *Program Director, TAY Space*

Editor Noelle R. Moss

Writers Jennifer Golbus, Noelle R. Moss

Photographer Paige Green

Designer And Them



LETTER FROM MARY

Dear friends,

What a year this has been. Just like all of us, Side by Side has been on a rollercoaster of challenging experiences. Starting with a major expansion of our Hunt School at the beginning of the academic year, to fires and PG&E power outages, to the rise of the COVID pandemic, then social justice and nationwide political tension—our agency has faced multiple tests.

I am very proud to say that our staff rose to each subsequent challenge and—by coming together—sustained our programs and clients through this tumultuous time. You can read more about this year from our staff’s perspective on pages 8-9. I am honored to work with each and every one of them.

Even in the face of shelter-in-place orders, telehealth, and remote learning, Side by Side’s clients have always been at the forefront of our collective consciousness. Staff collaborated across programs to keep our young people and their families engaged and supported this year. Our relationships with them deepened with new insights enabled by telehealth and cross-program engagement to better serve their needs.

Now, as 2020 comes to a close, we are using all of the lessons of the past year to look to the future and what it will bring. Adversity has heightened and clarified the needs of our community and we are endeavoring to meet them. Side by Side’s new strategic plan will be completed very soon, and I look forward to sharing the key goals and strategies that will guide our future initiatives.

Until then, stay safe and well. Take care of each other. And know how much we all appreciate your enthusiasm and support for Side by Side’s work.

With gratitude,

Mary Denton, CEO

Side by Side
300 Sunny Hills Drive, Bldg. 5
San Anselmo, CA 94960
Tel: 415-457-3200
Fax: 415-456-4679

SidebySideYouth.org
f sidebysideyouth
@ sidebysideyouth
@sidebyside4kids
Side by Side

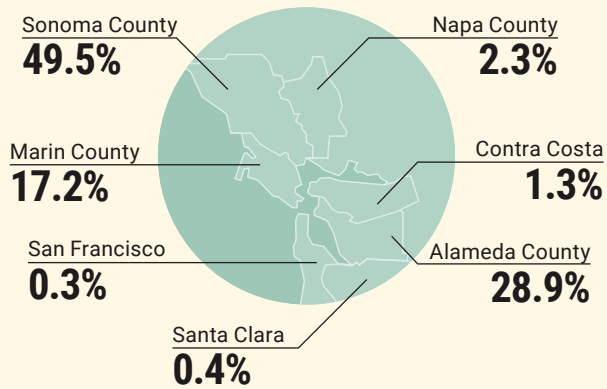
A PORTRAIT OF SIDE BY SIDE

WHO WE ARE AND WHO WE SERVE

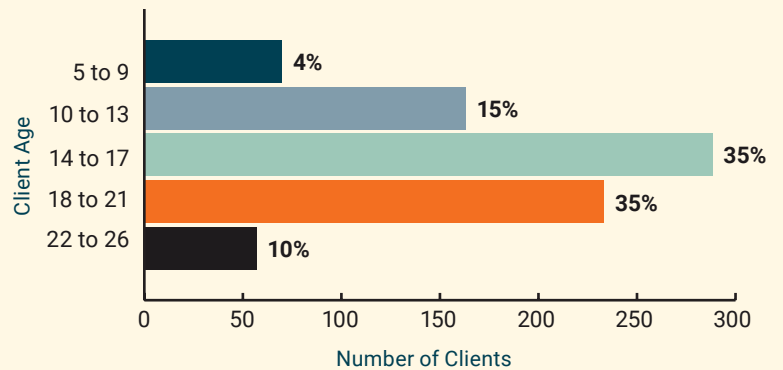
CLIENTS AND STAFF BY ETHNICITY



CLIENTS BY GEOGRAPHY



CLIENTS BY AGE



Clients who are
Medi-Cal or
Free/Reduced
Lunch Eligible:

89.5%

DIRECT CARE STAFF

- 24** Clinicians & Case Managers
- 7** Youth Specialists & Advocates
- 12** Teachers & Behaviorists
- 11** Aides & Teaching Assistants

PROGRAM HIGHLIGHTS



COMMUNITY COUNSELING (Alameda, Marin, Napa and Sonoma Counties)

Young people and family members served this year:
428 (North Bay) | 26 (East Bay)

Average Length of Care:
**26 weeks (North Bay)
22 months (East Bay)**

"Side by Side have helped me a lot with my three children these last few years. My children's therapists do their best so that my children are well and feel well. They have learned to express themselves and have grown so much with the help of their therapists. I am very grateful because Side by Side have helped us when we have needed it most, from therapy to relief from the fires, to most recently aid from struggles from COVID issues."

- Aide, North Bay Community Counseling parent

Donor

"We are proud to partner with Side by Side on several youth and family initiatives including Community Counseling. Providing mental health services to youth and their families makes a profound difference in their lives and in the larger Sonoma County community, particularly during these difficult times. This is just one of the ways the Medtronic Foundation works with partner organizations to improve the lives of communities around the world."

- Lyrae Myxter, Senior Philanthropy Portfolio Lead, Medtronic Foundation



"My experience with therapy has been mind-changing. I get to see my true colors."

- Valeria, East Bay Community Counseling client



TAY SPACE

Acute Emotional and Mental Health Services (Marin County)

Young people and family members served this year: **103**

Average Length of Care: **16 months**

"I appreciate the TAY program because they help me out with so many things that I couldn't do by myself. I really miss hanging out with the staff since the drop-in center closed [because of COVID]...I am really grateful for them."

- Michael, TAY Space client

YOUTHRIVE

Early Intervention in Schools (Marin and Sonoma Counties)

Young people and family members served this year: **389**

Average Length of Care: **9 months**

"Adrian and Vernon are good role models for me. They helped me stay connected with games and the Zoom groups during quarantine. I can text them when I have something going on, and that's important to me."

- Alejandro, YouThrive client



Donor

"Within Sonoma County there is an incredible need for supportive services that address social, emotional and mental health. Side by Side's YouThrive program creates a unique opportunity to serve the Latinx community by providing critical support to immigrant students and their families. We know YouThrive will make a difference by emphasizing the importance of mental health and providing resources to some of our community's most vulnerable."

- Michael Haney, Executive Director, Sonoma County Vintners Foundation



IRENE M. HUNT SCHOOL

Special Education (Marin County)

Young people and family members served this year: **302**

Average Length of Care: **2 years**

"Learning how to advocate for myself, that really helped a lot with my grades and my relationships with teachers at my current school. By talking to teachers and letting them get to know me and how to help me, I went from an F to a B in class."

- Angel, Hunt School former student

OUR SPACE

LGBTQIA+ Support (Alameda County)

Young people and family members served this year: **303**

"I remember my first day at Our Space when I was 15...they helped me figure out who I am and loved me unconditionally as I came out and transitioned into the real me. There are no words to describe the fierce love they have for us and I hope to pay it forward one day and help the next generation."

- Jessica, former Our Space client



Donor

"Sutter Health recognizes the importance of engaging community partners to improve community health. Our not-for-profit mission compels us to step in where others may step back, investing in underserved communities and opening doors to healthcare that might not otherwise be available. We are proud to support Side by Side's Our Space program, which helps LGBTQIA+ youth access vital services."

- Mindy Landmark, Regional Manager, Sutter Health



REAL ALTERNATIVES

Transitional Housing for Foster and Probation Youth (Alameda County)

Young people and family members served this year: **124**

Average Length of Care: **14 months**

"Side by Side made me more independent. I've got work ethics and have been doing better in school. I am on my own and don't have to depend on anyone else. I can manage myself. I am succeeding with work and school and Side by Side is right by my side."

- Kelis, Real Alternatives client

Donor

"The Bernard E. & Alba Witkin Charitable Foundation has supported the Real Alternatives program annually since 2012. This year, of course, programming has been completely different. We have been impressed with how the RA staff have pivoted during the pandemic to make sure their clients are housed, kept safe, and provided with the services they need to deal with the stress of the situation, as well as their own personal growth. The program, both in the past and also now under difficult circumstances, provides support for transition age foster youth to grow into healthy, responsible adults."

- Ken Kuchman, Executive Director, Bernard E. & Alba Witkin Charitable Foundation

A GREATER ROLE FOR PARENTS AT SIDE BY SIDE

Sheltering in place and staying safe during the pandemic has required Side by Side, and the youth we serve, to adapt to remote strategies such as online groups, telehealth, and distance learning.

But beyond our staff, teachers, and clinicians, there's another group that has become more essential than ever in maintaining the wellbeing of our youth: parents and other caregivers.

Caregivers have been obliged to rise to the challenge of playing new roles that are normally filled in the school, clinical, or program setting. And it's not easy. "We have found that parents and other caregivers need our support just as much as the students do," says Ken Taylor, Campus Supervisor and Behavior Specialist at the Irene M. Hunt School. "It's incredibly challenging trying to be a teacher and a therapist and a behaviorist, in addition to being a parent." Supporting caregivers by teaching them tools and techniques, in addition to providing much-needed emotional support, has become crucial to the continued wellbeing of youth during this challenging time.

The Hunt School has also been able to foster closer relationships between the caregivers and their child's clinicians. Bryanne Guthrie, the school's Lead Clinician, explains that when therapy happens as part of a student's normal day on campus, parents aren't as involved. "But during shelter in place, our therapists interacted more with the family system in order to schedule remote therapy appointments. This created more awareness and promoted strong relationships between parents and clinical staff that weren't always there before." Guthrie says now that students are back on campus, she's pleased to see that heightened engagement and involvement in the mental health portion of their student's education continue.

Side by Side's YouThrive program has also added family support services to their program model (which before the pandemic primarily consisted of in-school group sessions with the youth) with bilingual monthly workshops for parents, addressing topics such as self-

care, mental health, and general anxiety about the pandemic. The YouThrive team worked with school staff, counselors, and principals to get the word out and let parents know this resource is available. "We understand the stress these parents are under and the added worry they carry when their children are struggling. Working with the parents is proving to be very supportive, both for them and for the youth" says Adrian Maldonado, YouThrive Program Manager.

Community Counseling therapists report that telehealth sessions and online groups have provided a never-before-seen glimpse into the homes of the youth we serve. Clinicians are able to see interactions between siblings and client-parent exchanges in a way that was not visible during typical pre-pandemic office or school visits. This added insight has allowed our staff to reach out to parents to provide a more holistic approach towards supporting their young person.

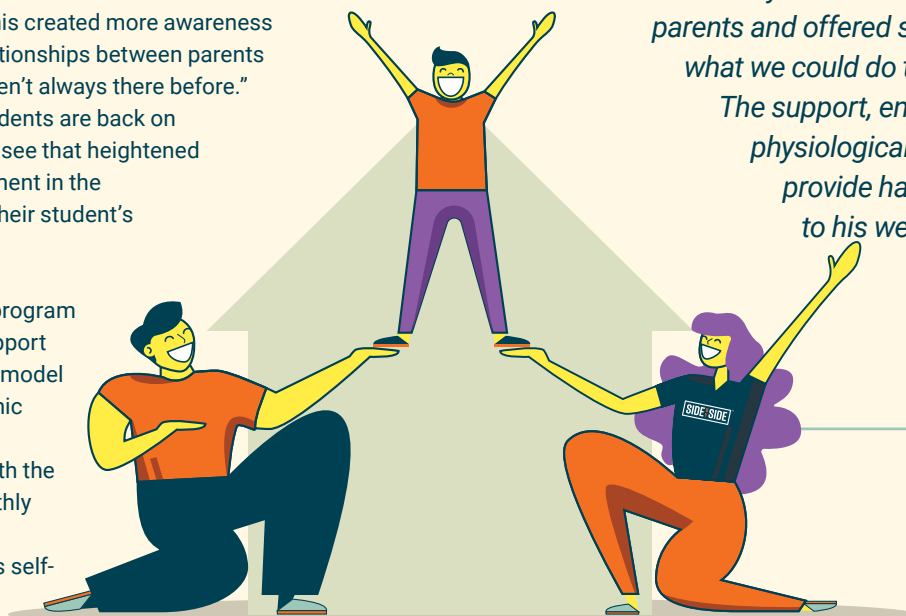
The phrase "it takes a village" has never been truer than in the socially distant world we now occupy. We are grateful for the incredible effort this year by the families and caregivers who partner with us to support their children. Just as with our youth, we are here to walk side by side with them, now and in the future.

“

Surviving during a global pandemic is new for all of us. Learning and living a new "normal" is challenging. For my son who attends the Irene M. Hunt School, shelter-in-place orders had a major physiological impact on his mental stability. Ben went from thriving at school to feeling lost and disconnected. Physically being separated from his teachers and peers took a huge mental toll on him. As his mother, it was heart-breaking to witness. Ben's clinician, Bryanne, not only made arrangements for my son to safely continue in-person therapy appointments on campus, she also truly listened to our concerns as parents and offered suggestions about what we could do to help Ben cope. The support, encouragement, and physiological safety the Hunt staff provide has been instrumental to his well-being.

-Deanna Brock,
Hunt School parent and
SBS board member

”



A SENSE OF PRIDE, PERSEVERANCE & COMING TOGETHER

THIS HAS BEEN AN EXTRAORDINARY YEAR. BUT OUR COLLECTIVE EXPERIENCE HAS SHOWN US MORE CLEARLY THAN EVER THAT WE CAN HOLD EACH OTHER UP THROUGH HARDSHIP. ACROSS OUR AGENCY, WE HEARD VOICES UNIFIED BY THEMES OF PERSISTENCE, CREATIVITY, COLLABORATION, RESILIENCE, INSPIRATION, AND A DEEP SENSE OF PRIDE IN WORKING FOR A FORWARD-THINKING ORGANIZATION THAT HAS LIVED UP TO ITS NAME THROUGH THESE DIFFICULT TIMES.

RESILIENCE & INSPIRATION

That strength and resilience was especially noted by Abigail Smith, Real Alternatives Clinical Case Manager, "My coworkers, especially the youth specialists, have shown such resilience caring for the youth while carrying the heaviness of this time." Her colleague Bonnie Meyer expressed gratitude for the transitional housing program's maintenance team. "They are the unspoken heroes," she says. "One client seems to have a knack for locking herself out but they come to the rescue every time, changing locks and letting her in in the middle of the night, and always with a smile."

TAY Space Clinician Laura Tucker commented, "So many times I have just wanted to give up because it's so hard to balance everything. A lot of us are working moms. And suddenly those boundaries are blurred. But that has also allowed us to relate to our clients and our families and we just keep doing what we've always been doing and celebrate the successes."

Even the small client successes are sources of inspiration that help staff find purpose. Moha Aldirhalli, Side by Side's Data Technician, found a new appreciation for his agency while creating a new online chart review system for clinicians since sharing hard-copy documents was no longer possible. "Listening to clinicians' stories as we worked on the project made me better understand my role in helping the agency do its important work." Community Counseling Clinician Jeremy Cox reflects on his own work, saying, "I truly feel like I am making a contribution."

That sense of contribution was echoed at the Hunt School. After the murder of George Floyd, the school took a public stand for social justice. Teachers spoke out in support of the Black Lives Matter movement and made curriculum changes to address diversity, equity, and inclusion throughout the year and across all subject areas. Prioritizing this important topic provided a deep source of inspiration and pride to school staff.

"I am so proud of our program. We didn't skip a beat! We met our students and our families where they were."

– Ken Taylor, Campus Supervisor and Behavior Specialist, Irene M. Hunt School

ONE AGENCY

IF WE HAVE LEARNED
WORKING TOGETHER,
IT'S THAT TOGETHER
WE ACCOMPLISH ANYTHING

"I am so moved by the things I see every day. It's amazing. All our program staff has been through some kind of hardship during this pandemic, but in spite of it, they all still put the clients first."

– Julie Quater, Development Officer

PERSISTENCE

Keeping Side by Side's young people engaged in a primarily virtual environment was one of the biggest challenges facing staff all across the agency. Vernon Pope-Banks, YouThrive Youth Specialist, kept reaching out via SnapChat to one troubled youth throughout the pandemic until one day the youth called back. "It was an incredible feeling to know that planting these seeds makes such a difference for our clients."

Bernice Saavedra, Real Alternatives Program Director, echoed that persistence saying, "At first, it was scary not knowing the answers about COVID and trying to balance personal safety with client responsibilities. But even with that uncertainty, our staff were determined to work through their own fears and find ways to keep our youth engaged at such a critical time."

CREATIVITY & COLLABORATION

Sustaining that engagement and reaching Side by Side's clients took more than just persistence. Creativity was also key. Community Counseling Clinician Hilda Leon brought her puppet Molly to remote therapy sessions when she noticed that her young clients were having trouble staying engaged.

Our Space and YouThrive were both operating virtual groups and struggling with client engagement, but reaching out across regions in the spring enabled both Diego Basdeo Fitzgerald, Our Space Program Manager, and Adrian Maldonado, YouThrive Program

Manager, to draw inspiration from each other's efforts and build a bond that will sustain them both even after the pandemic ends.

Art came into play across the agency. One Community Counseling clinician dropped off art supplies for a client so they could do art therapy during their Zoom sessions. YouThrive sponsored a COVID-related art contest, and the Irene M. Hunt School created an online gallery of student artwork through its collaborative partnership with another local nonprofit, Art from the Heart. Our Space facilitated a youth-led virtual cabaret and drag show.

YouThrive also partnered with a Petaluma-based gym, CrossFit Sav-Up, to offer a program combining exercise, nutrition coaching, and positive role modeling using outdoor gym equipment. One youth recognized the benefit, "It's really nice to get out of the house. I've got an outlet if I'm feeling upset, angry, or stressed."

"Side by Side carefully and caringly handled the adversity brought on by the pandemic and wildfires. They stood by their employees. Listened to their voices. And kept us all safe."

– Brian Santa Cruz, QA Specialist

Not content to just offer fun "hooks" for client engagement, our YouThrive and Community Counseling programs had a "meeting of the minds" to brainstorm about how best to provide mental health services to the North Bay youth they serve (see cover photo). With the support of our fundraising team, a pilot program was born marrying the services of both programs and offering YouThrive students individual counseling, bilingual parent workshops, and case management, in addition to their virtual weekly YouThrive group sessions.

YouThrive and Community Counseling weren't the only ones piloting new initiatives. Clinicians, teachers, and behaviorists at the Hunt School developed a Rapid

Response Team approach to proactively find collaborative, creative solutions for students on the edge of crisis situations.

Reflecting on the synergies discovered during the past year, Larry Woodland, Director of Clinical Practice and Regional Director for Side by Side's North Bay Programs, commented, "There's a real opportunity when staff supports one another, and together we find the strength to creatively solve problems."

ACROSS THE AGENCY, THERE HAS BEEN A UNIVERSAL APPRECIATION OF ALL STAFF MEMBERS LOOKING OUT FOR ONE ANOTHER, AND A DEEP DEDICATION TO WORKING TOGETHER TO FIND SOLUTIONS FOR OUR COLLECTIVE CLIENTS, NO MATTER WHICH PROGRAM THEY BELONG TO. IRENE M. HUNT SCHOOL TEACHER ERICA CLAY EXPLAINS, "WE DO WHAT WE DO – WE COME TOGETHER, AS ONE, TO FIGURE OUT THE BEST WAY TO SUPPORT EACH AND EVERY YOUTH."

NEED ANYTHING FROM
HER THIS PAST YEAR,
HER, WE CAN
YTHING. WE ARE TRULY
SIDE BY SIDE –
WITH YOUTH,
THROUGH EVERY
ADVERSITY.

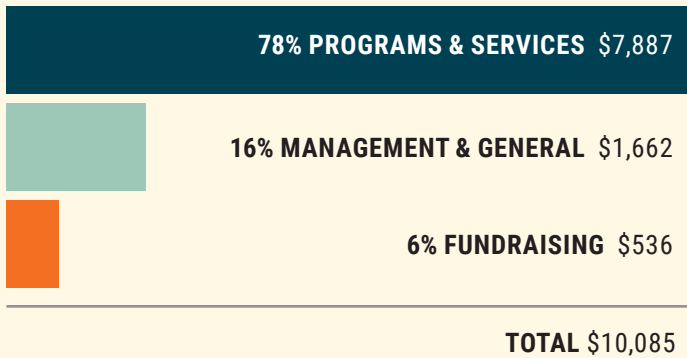
ONE MISSION



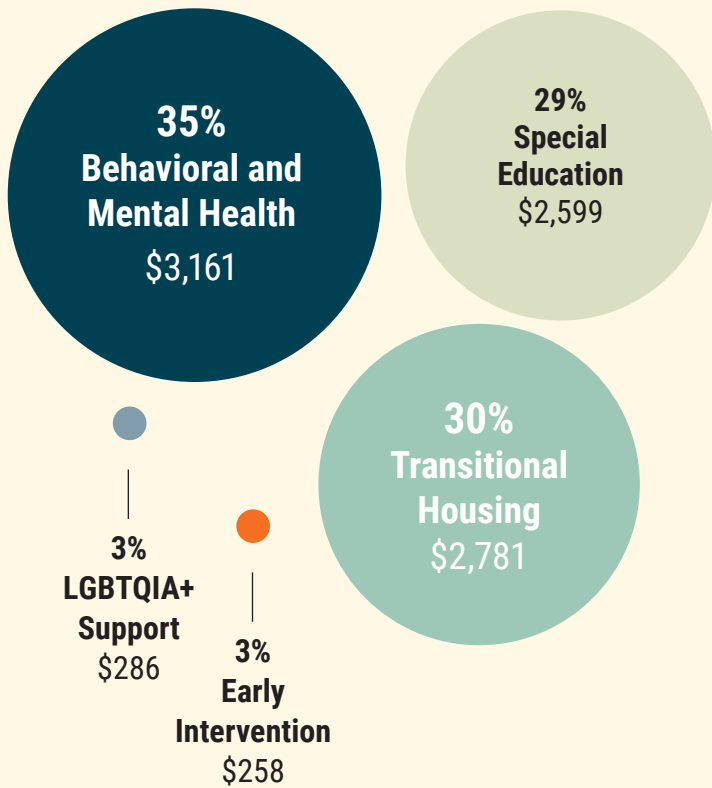
Hunt School staff discussing student achievements and challenges

FINANCIALS

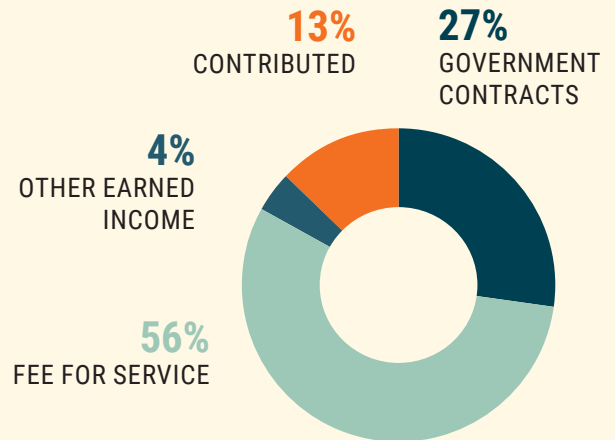
EXPENSES BY TYPE (% and 000's)



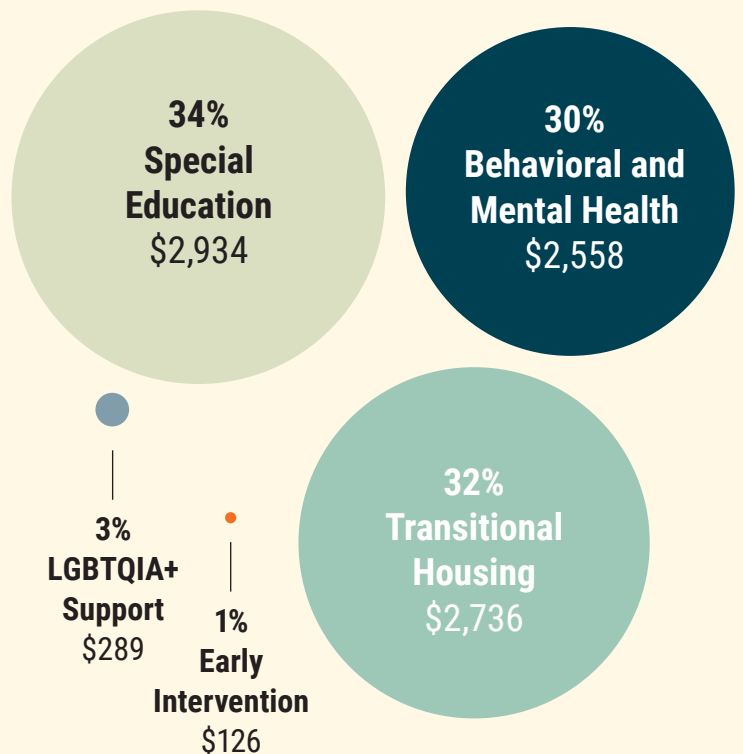
EXPENSES BY SERVICE AREA (% and 000's)



REVENUE BY TYPE (%)



REVENUE BY SERVICE AREA (% and 000's)



FINANCIAL POSITION (000's)

Total Assets
\$10,030

Total Liabilities
\$6,466

Total Net Assets
\$3,564



THANK YOU FOR JOINING SIDE BY SIDE ON OUR JOURNEY.

The following generous supporters gave Side by Side cash gifts between July 1, 2019 and June 30, 2020. Each and every gift, no matter the size, enables us to walk with the Bay Area's young people impacted by adversity on their unique paths and provide the safe space most of them have missed in their lives. **Thank you.**

\$50,000 +

Five Bridges Foundation *
The Raymond & Ricki Syufy
Charitable Gift Fund *

\$25,000 - \$49,999

J. Patrick Hunt & Frankie Hunt **
National Association of Theater
Owners of CA/NV
The Robert & Shirley Sanderson
Fund of the Marin Community
Foundation **
Sutter Health Eden Medical Center

\$10,000 - \$24,999

Bella Vista Foundation
Bernard E. & Alba Witkin
Charitable Foundation
Mr. Charlie Clifford &
Mrs. Holly Hopper *
Community Foundation
Sonoma County
The Covington Family Fund **
The Eucalyptus Foundation
Elizabeth E. Bettelheim
Family Foundation
George H. Sandy Foundation **
Horizons Foundation
The Jay Pritzker Foundation
Jonas Family Foundation *
Ms. Elisabeth Levy **
Medtronic Foundation
Sandra & Scott Nikas
Dale Satake
Sonoma County Vintners
Foundation
Jacqueline & David Spielberg **
Wells Fargo Foundation **
West Davis & Bergard Foundation

\$5,000 - \$9,999

AHS Foundation **
Bank of Marin **
Jackson Fund of Community
Foundation Sonoma County
Robert Beadle
Jasmine & Edmond Bedrosian
BioMarin Pharmaceutical, Inc.

Barbara Carbone & Gregg Lyman *
The Cornell Family Charitable Fund
Mr. & Mrs. David Egan **
Fenwick Foundation **
FIS *
Kara & Scott Ghilotti
Ghilotti Construction Company **
Harbor Point Charitable Foundation
Herbst Foundation **
KCM Investment Advisors
Patricia & Al Lateef
Marin Charitable **
Marin Community Service Fund
Roxanne & Alex Najafi
Stephanie & Chris Plante
Mary Russell & Nick Oust
Marissa Shipman & Andre Hakkak
Speedway Children's Charities /
Sonoma Raceway **
Kathy & John Woldrich **

\$2,500 - \$4,999

Active 20-30 Club of Santa Rosa #50
Argonaut Management Services, Inc
Autodesk Foundation Employee
Engagement Fund
Lisa & Joel Bakamis *
Byrd & Jim Baldwin *
Bon Air - Greenbrae *
Joan & Michael Buckley Fund of
Community Foundation Sonoma
County
Wendy & John Buscaglia/
The Carol & Robert Jackson
Family Foundation
Shelley & Jay Cahan *
California Foundation for
the Advancement of the
Electronic Arts
Monique & Josh Corren
Janet Hayes Daniel & Jason Daniel
Mary Denton & Monte Deignan **
Julie & Chris Dolan
EACH Foundation
Ms. Kiki Goshay *
James Greene
Harrington Group *
Raime Heyneker
Wendy & Jay Huck

In-N-Out Burger Foundation **
Erica Jacobs
Kaiser Permanente -
Northern California
Kathlyn McPherson Masneri &
Arno P. Masneri Fund **
David Kostuik & Jessica Lewis *
KPMG *
Leon Lee
Lisa Bakamis Interior Design, Inc.
Tim & Jennifer Lynn
Carole & Bruce MacPhail **
Miriam & Drew Manning
Marco A. Vidal Fund **
Marin Sanitary Service **
Martz Accountancy Corporation
Ms. Deborah Matthies *
Mutual of America **
One Toyota
Relevant Wealth Advisors, LLC *
Robison Family Foundation **
David & Tonia Rubin
Safeway Foundation
Linda & Stephen Snodgrass *
Sutter Health Novato
Community Hospital
Martha & Daniel Wenzel

\$1,000 - \$2,499

Anonymous (2)
Active 20-30 Redwood
Empire #1029
Alexandra Ray Art Advisory
Arntz Family Foundation **
Belvedere Fund **
Sidney F. Baker ** ◊
Amy & Seth Barad *
Bay Area Physicians for
Human Rights *
Roberta & Henry Berg
Barry Blue
Peter & Ione Breen **
Lynn Brinton
Deanna Brock & Daniel Freeman
Lydia & Tony Cameron **
CarVal Investors Foundation
John Castro
Ri Chan
Cheryl & Mike Cinelli *

d'Alessio Family Fund **
Jackie & Steve Datnow
Donald O. & Ronald R. Collins Fund
Mr. & Mrs. Ken Ellingsen **
Exchange Bank *
Dr. & Mrs. Charles Fischer *
Carolyn Flannery
Gaylesta, Inc.
Ghilotti Bros., Inc. **
Nannette Griswold **
Lillian Hames
Ms. Virginia Harmon
Natalie & Louis Harrison
The Heck Foundation
Heffernan Foundation *
Melissa & Colin Henne
Nicolle Henneuse *
Julia L. Grant Fund
Kaiser Permanente Community
Benefit - Marin-Sonoma
The Kawaja Family
Dr. Catherine Kennedy &
Mr. Daniel Grossman **
Ruth Krishnan
Elizabeth Kulavic **
Terri Kwiatek **
David Lechuga ◊
Mr. & Mrs. Skol Lockyer *
Patrick London * ◊
Robyn & Warren Luhnig
Ms. Lesley Margolis
Marin Roto-Rooter
Shannon & Taggart Matthiesen
Mr. & Mrs. Robert McLennan *
Tricia & William Meyer
Stephanie & Kevin Morgan
Debbie & Tom Piliero
Edward Pollak Family Fund **
Staci & Tom Reilly
Mark Rose
Howard Schomer &
Kimberly Rochat
Schultz Foundation **
Shelley & Company
Charles Silverman *
Carly & Greg South
St. Joseph Health -
Northern California
Amy Storek



“Thirty-nine years ago, I joined the Glenwood Guild of Sunny Hills (now Side by Side) to help raise funds for kids in need. I also worked as the agency’s Volunteer Coordinator and had the pleasure of working with hundreds of wonderful volunteers whose dedication and gift of time made such a difference in the lives of thousands of children and families over the past 125 years.”

– Gill Keirle, Glenwood Guild member

The Goode Company
Tara & Sean Ticknor
Samantha & Paul Tradelius
Mr. Quoc Tran
Ms. Christine Tsingos
W. Bradley Electric, Inc. **
Leslie & Ken Wachtel
Mr. James Wandrey *
Westamerica Bank **
Jenaha Whitt & Brandon Turner

\$500 - \$999

Anonymous (2)
A & P Moving, Inc. *
Adams, Adams & Morris, Inc.
Alten Construction **
Baldwin Production Services
Kimberly Berman
Boo Boero **
Luanne & Hugh Cadden
Jac & Tom Cadden
Adolph & Jeanne Capurro
Revocable Trust *
Cardiovascular Associates of
Marin & SF Medical Group, Inc. **
Sue & Joe Carlomagno **
Chevron Matching Gift Program *
Catherine & John Chiosso
Mr. David Currie **
Rich & Carolyn Czapleski
Marita & Kevin Daly **
John Donahue
Erickson Family Fund **
Ashley Fischer
Daniel Gagen Giving Fund
Charles Gardiner
Jennifer L. Gotti **
Hobson/Lucas Family Foundation
Hoffman Development Co. **
Julie & John Hullverson
Tom & Diane Johnston **
Herbert R. Mayer & Jeanne C.
Mayer Foundation

Keegan & Coppin Co., Inc. **
Terry & Bob Keyes **
Marin Lodge No. 200 I.O.O.F. **
Simon McBride & Jasmine Gavam ◊
Mr. & Mrs. Brian McLeran
Mara C. Meisner & Davy Crockett *
Montecito Marketplace Associates **
The Thomas & Susan Moore Family
Fund of the Ayco Charitable
Foundation **
Nonprofits Insurance Alliance
Mr. & Mrs. Thomas Obletz
Vicki Pedersen
Linda & Michael Perrella ** ◊
Mr. & Mrs. James Phoenix **
Maria Pitcairn **
Lisa L. Rapoport
Mr. & Mrs. Harvey Rich *
Nancy & Richard Robbins **
Robert H. Greene Real Estate
Amy & David Schaeffer
Lisa & Marc Sebastian
Mike & Jennifer Shepard *
Mercedes Shinohara-Taylor ◊
Cherie Sorokin
Kristen & Ben Swann
Sandy Terrado Janachowski &
Stephen Janachowski **
The Tilles Family Charitable Trust
Unitarian Universalist Congregation
Vin Antico
Lorraine Voskanian
Nicki & Matt Webster
Carrie & Andrew Weinstein
Candy & Brian Wilson *
Woodland Sponsors

\$250 - \$499

Anonymous (3)
Jamie & Will Bartlett
Naki & Michael Bauer
Annette & David Bekowich *
Nelson & Nell Branco

Mr. & Mrs. Bill Brody *
Ms. Joan Brown
The William & Carol Bryan
Charitable Fund
Leslie & Richard Cohen **
Lynn & Russell Colombo
Lois de Banzie
Beth Drummey
Mr. Rodney Erwin, M.D. *
Susan & Geoff Flint
Dianne Fowler **
Mr. & Mrs. John Francis
Greg & Denise Frey
Ayda & Jeff Gibson
Greene Building Company, Inc. **
Margie & David Guggenhome *
Rebecca & Ray Hathorn *
Diana & Jeffrey Hill **
Dale & Mark Hillard **
Karen I. Hirsch & James A. Condit
Mr. & Mrs. Ray Hoffman, III *
Russ & Kathy Ketron **
Eileen Kilgariff
Laurel Kisliuk
Lynn Larsen
Bruce Leitstein *
Hilda Leon
Lindskog Family Investments
Susan MacMillan
Jan Maisel, M.D. **
Mangia/Nosh *
Mr. & Mrs. Joseph Martino **
Jesse McLeod
Purple Lady/Barbara J.
Meislin Fund **
Mission San Rafael
Rotary Foundation
Nathaniel Morris &
Stephanie O’Byrne Morris
Noelle R. Moss
Cynthia Murray **
Joanne & Frank Murray
Craig Nelson

Ms. Sally Newson *
Mr. & Mrs. Frank Noonan
Nonprofits Insurance Alliance
Tes & Anders Norlin Charity Fund
Joe O’Hehir & Vicki Masseria
Mr. & Mrs. Dennis O’Neill *
Jennifer & Robert Partrite
Pam & Tom Pitts
Tucky & John Pogue *
Point Reyes Farmstead
Cheese Company
Ashley & Corey Preston
Mr. & Mrs. David Rabb **
Scot Raff
John Ricco
James Robinson
Tracey M. Ruiz
Renee Rymer & Tony Clementino
Mr. & Mrs. Terry Salzer
Sandra Schomer
Christine Scott **
Carole & John Shook **
Carissa & Trevelyan Stugard
Kim & Rick Sustek
Marcy Territo
The 360 Consulting Group
Charitable Fund
Todd & Katie Traina
Tri Counties Bank
Steven & Jacqueline Tulsy **
United Markets **
Anne & George Wagner
Doyle Quane Family Law Group
Suzanne L. Zimmerman
Charitable Fund **
Jane & Mark Zuercher

\$100 - \$249

Anonymous (2)
Paula Allen
Jim Allen
Timothy Bacon
Denis J. Bacon
Donald Barash
Dr. & Mrs. Joseph Basso **
Cindy & Bernie Benson **
Mr. & Mrs. John Bessolo III *
Deborah Beveridge **
Karen Bischoff & Ed Boisson **
Julie & Todd Boes
Boon Supply
Lyndie Boulton
Sue & Pete Bowser *
Diane Bradford
Gladys & Peter Brajkovich **
Leah & Scott Bronson
Christine Brown & Matthew Teasley
Dorothy Burk
Shelia & Kevin Calegari
Mr. & Mrs. Caroli *
Diane E. Carr
Children For Change, Ross Valley
Mr. & Mrs. James Christensen
Susan & Nicholas Clark **
Cynthia Clark
Leanne & Greg Clayton
Alice Cogliandro **
Celeste & John Craemer
Leslie Crisfield
Ema Davila & Dave Bromberger
Marion Davis **
Judy & James DeVries
Polly & Ronald Elkin
MaryAnn Ellsworth

Lorenzo Ersland
 Erik Evans
 Cassandra Falby
 Lina & Mark Fancy Whitings
 Alicia & Greg Ferrando **
 Dale Fousel & Deborah Everett **
 Andrea Garfia
 Linda Ghilotti
 Marjorie & James Gibbs **
 Terry Gilbert
 George & Joanne Greco *
 Cynthia Gregory
 Marti & Tony Grimminck
 Ingrid Hamann
 Mr. & Mrs. Mike Hatfield *
 Michael Higgins & Stacy Lauer
 Mr. & Mrs. Bill Hogan *
 Freddie Joan Howarth
 Osborne Howes **
 Mr. Morgan Beatty &
 Mrs. Winnie Huff *
 Tom Hunter
 William W. Jones **
 Kaiser Permanente Community
 Giving Campaign
 Shauna & Tom Keenan **
 Erin Kilmer-Neel
 The Stephen & Julie Kimball
 Charitable Fund *
 Cheryl Lincoln-Nelson &
 Ryan Nelson
 Local Independent Charities
 of America **
 Mr. & Mrs. William Loeffler
 Ms. Shay Loftus **
 Marche aux Fleurs *
 Marin Brewing Company **
 Mr. & Mrs. James Masson, Jr. *
 Keith McAllister
 Mr. & Mrs. Charles McBride *
 Mr. & Mrs. John McCall **
 Senator & Mrs. Mike McGuire
 Janet L. Mettner **
 Glenn K. Miwa & Laura Miwa **

Lois & Bruce Moody **
 Mr. & Mrs. Robert Morehen
 Lilian Murray *
 Oksana & Tim Myers
 Alexander Nikas
 Ms. Thelma Nissen **
 Kathy & Bill Nunan *
 Mr. & Mrs. Don O'Brien
 Ellen & Peter Obstler
 Brooke & Mohamed Palizi
 Sara Pasquinelli
 Peter & Nina Perl
 Perrella College Consulting
 PG&E Community
 Investment Program
 Stephanie & Michael Poley
 Michael Pon
 Samantha Pungprakearti
 Bruce Raabe & Sara
 Wardell-Smith *
 Amy & Chris Rankin-Williams
 Mr. & Mrs. Charles Raven
 Dylan Reed
 Cynthia Roach
 Supervisor Dennis Rodoni
 Mr. & Mrs. Richard Roman *
 San Anselmo Inn **
 Mrs. R. E. Saxton **
 Marilyn & Gordon Shank
 Lisa & Lionel Shaw
 Carole & Douglas Sheft **
 David Short
 Richard & Rebecca Smith
 Giving Fund *
 Mr. & Mrs. John Smith *
 Debbie & Brian Snodgrass
 Anna & Walt Spevak
 Craig Sundstrom
 Steven Talan
 Sally S. Taylor **
 Lani Blue Taylor & William Taylor
 Taylorblue Design
 Mari & George Tischenko
 Dickson Ranch *

Judy Torrison **
 Mimi Towle
 Rosanna & Steve Ullrich
 Jessica Umphress & Josh Kizner
 Peggy Vaughan * ◦
 Tiffany Velez
 Mr. & Mrs. David Walker *
 Michael Webb & Patricia Mullen **
 Christine Wells Cooper
 Sandy Westin
 Dr. Thomas J. White
 Jennifer Yu

\$50 - \$99

Anonymous (3)
 Alpha Gamma Chapter of
 Omega Nu
 America's Best Local Charities **
 Pamela Anderson
 William & Sara Barnes
 Katherine Barrass **
 Gloria Bauer
 Vivian Bauer *
 Leesa Benenhaley
 Faye E. Blatt **
 Mary Bramblett
 Helen Bredderman *
 Lynn Brown
 Lido & Mary Cantarutti **
 Joan & Robert Capurro **
 Ms. Charron *
 Colonel Cope *
 Nancy Cowen
 Mr. & Mrs. Cowperthwaite **
 Cassia Crall
 Selma & Jason Delaney
 Jim Dicker
 Inez Engstrom
 P.C. Ernsberger
 eScrip *
 Allison Fletcher
 Debbie Evrigenis George
 Robert Gollan *
 Kate Gomez *

Paul & Debra Guerin **
 Ms. Karen Halvorsen **
 Melanie Harbert
 Ms. Inge Hendromartono
 Ms. Jeanette Hill **
 Iron Springs Pub & Brewery
 Edward Jamgotchian
 Mary Ellen Jenkins
 Blake Jordan
 Mary Ellen Kassatakis
 Chris Labadie
 Scott Lucas
 Carleton MacDonald
 Maritel M.
 Barbara Maricle *
 Brenda Moreno
 Kathleen Mullen *
 Kenneth & Anne Nelson **
 Brenda Nirenstein
 Oracle Corporation
 Margaret Orzechowski
 Kathleen Parker *
 Margaret Paula
 Mr. Ronald Pummer
 Theresa Reyes **
 Jeanine Rossi
 Charlie Souby
 Marcia & David Sperling
 Barry Spitz
 Rachel Stower
 Mr. & Mrs. Richard Sullivan **
 Swirl San Anselmo
 Swirl Time LLC
 Allen & Donna Thomas *
 Mr. & Mrs. Dale Tietz
 Judith Wilson **
 Ryan & Stephanie Wycoff
 Mr. Steven Zolno

GIFTS IN HONOR OF

Deena Benenhaley
 Deanna Brock
 Linda Christensen
 Jessie M. Crimmons
 Ginger & David Egan
 Shirley Ehrlich
 Jennifer Finger
 Jennifer Gotti
 Constance Govi
 The Headlands Company
 Kathy Ketrion
 Laurel Kisliuk
 Matthew Lam
 Sue Moore
 Scott Nikas
 Joy Phoenix
 Maggie Polan
 Hayden Rubin
 Side by Side Staff
 Laura Taylor
 Candy & Brian Wilson

GIFTS IN MEMORY OF

Vivian Margaret Felton
 Devora Ruth Harrison
 Irene M. Hunt
 Dolly & Tom Torrison
 Robert Vaughan



* Donors to Side by Side for 10-19 years ** Donors to Side by Side for 20 years or more ◦ For The Kids monthly giving club member

"I was a kid with many adversities who often lacked guidance and stability. Thankfully, I am now in a position to support organizations like Side by Side to help kids like me reach their full potential."

– Samantha Pungprakearti, new Side by Side donor

LEGACY GIVING SOCIETY

Side by Side's Legacy Society honors those individuals who have thoughtfully included our agency in their estate plans. By designating a legacy gift to Side by Side, the services and programs that they support will continue to touch the lives of our clients for years to come.

Anonymous (3)
Kathryn L. Black & Todd Sparks
Virginia Bertelsen
Sue Clark
David M. Hellman
Diana & Jeffrey Hill
Elizabeth Johnson
Russ & Kathy Ketron
Carole & Bruce MacPhail
Nora J. McCallie
Mr. & Mrs. Richard K. Robbins
John B. Robinson
Robert & Shirley Sanderson
Mary Tash
Cathy Tucker
Charles Walters

GUILD MEMBERS

The Guilds of Side by Side formed the backbone of support for our agency for decades. From community fundraisers to the Grape Festival to birthday treats for the Irene M. Hunt School, the Guilds have been integral to our organization. We are honored to recognize the members of the Terra Linda and Glenwood Guilds below for their advocacy and commitment to the young people that we serve.

GLENWOOD GUILD

Gill Keirle, *President*
Linda Christensen

Margaret Erickson
Ruth Falkenberg
Carole MacPhail
Barbara Metzger
Sue Moore
Anne Nelson
Bea Newhall
Joy Phoenix
Maggie Polan
Terrie Reyes
Jan Smith

TERRA LINDA GUILD

Kathie Swart, *President*
Joyce Anderson
Kathy Barrass
Helen Dennis
Vivi-Anne Regstad
Kay Schmitt

GOVERNMENT CONTRACTS & GRANTS

Alameda County Department of Child & Family Services/Youth Acceptance Collaborative
Alameda County Behavioral Health Care Services
Beacon Health Services
California Department of Education
County of Marin Behavioral Health & Recovery Services
County of Sonoma Behavioral Health
Kaiser Permanente – Northern California
Napa County Health & Human Services

EDUCATION PARTNERS

Caliber Beta Academy
Davidson Middle School
Hayward Unified School District
Healdsburg Unified School District
Kentfield Unified School District

Larkspur-Corte Madera School District
Mare Island Technology Academy
Marin County Office of Education
Miller Creek Unified School District
Mill Valley Unified School District
Novato Unified School District
Petaluma City Schools District
Roseland School District
Ross Valley Unified School District
San Francisco Unified School District
San Rafael City Schools
Santa Rosa City Schools
Sausalito/Marin City School District
Shoreline School District
Sonoma County Charter Schools
Sonoma County Office of Education
Tamalpais Union High School District
West Contra Costa Unified School District

IN-KIND DONORS

Achadinha Cheese Company
Alameda Bicycle
Alameda Island Brewing Company
All-American Printing Services
Alpha Omega Winery
AMF Bowling
Amici's East Coast Pizzeria
Amplify Snack Brands
Anyon Design
Asian Art Museum
Aurora Theatre Company
Baked Blooms
Bakesale Betty
Byrd & Jim Baldwin
Balletto Vineyards
Bank of Marin
Leslie & James Barker
Barrell House Tavern
Bay Area Discovery Museum
Bayonet & Black Horse
Golf Courses

Bear Republic Brewing Co.
Bee Kind
Jamie & Joe Behrendt
Bellanico Restaurant and Wine Bar
Berkeley Bowl West
Berkeley Repertory Theatre
Black Stallion Estate Winery
Body Kinetics Mill Valley
Boisset Family Estate
Brewsters Beer Garden
Deanna Brock & Daniel Freeman
Buena Vista Winery
Justin Burt
Wendy & John Buscaglia
Luanne & Hugh Cadden
California Film Institute
Canard Vineyard
Sue and Joe Carlomagno
Casa de Chocolates
Cinnabar Theater
Clif Family Farm
Cline Family Cellars
Ellen Collarini
Comforts
Cooley LLP
Cooper Alley Salon
Costco Wholesale
Credo
Maria Delgado
Mary Denton & Monte Deignan
E.R. Sawyer Jewelers, Inc.
Eatwell Farm
Elmer's
EO Products
Equator Coffees & Teas
Escape Room
Ethical Clothing
Exploratorium
Ferrari-Carano Vineyards and Winery
Fine Arts Museums of San Francisco
Frog Hollow Farm
Getaway Adventures
Golden Gate Bridge Highway & Transportation District
Golden Tee Golfland
Jennifer L. Gotti
Gott's Roadside
Gravenstein Grill
Griffo Distillery
Harris' Restaurant
Harvest Moon Estate & Winery
Hog Island Oyster Company, Inc.
Theresa Hogg
Incavo Wine Lounge
Indian Valley Golf Club
International Orange
JAAV Inc, dba Clic
Jackson Family Wines
Linda and Todd Jaquez-Fissori
Jelly Belly
Costa John
Kendra Scott
Kentfield Association of Firefighters
Kitchen On Fire
Kneading Ali
Krutz Family Cellars
La Toscana Ristorante & Bar
Lagunitas Brewing Company
Kim Laidlaw
Little River Inn
Local Food Adventures

Lord Stanley
 Lovejoy's Tea Room
 Ludwig's Fine Wine & Spirits
 Luther Burbank Center For The Arts
 Mangia/Nosh
 Marin Country Club
 Marin Dance Theatre
 Marin Independent Journal
 Marin Magazine
 Marin Power Yoga
 Marin Symphony
 Marin Theatre Company
 Marinistas
 Michael Merrill Design Studio
 Microsoft Store
 Monterey Symphony
 Museum of Art and Digital
 Entertainment (The MADE)
 Napa Valley Distillery
 Navitas Organics
 Neve & Hawk
 Nicasio Valley Cheese Co
 Sandra & Scott Nikas
 Nina McLemore Boutique
 Nobody From Nashville
 North Bay Business Journal
 Nothing Bundt Cakes
 Nugget Markets
 One Toyota
 Osmosis Day Spa Sanctuary
 Pacific Pinball Museum
 Paintball Jungle
 Tamara Parr
 Petaluma Market
 Petaluma Seed Bank
 Mr. & Mrs. James Phoenix
 Piazza D'Angelo
 Picco
 Pilates ProWorks
 Pizzalina
 Platypus Tours Ltd.
 Point Reyes Farmstead
 Cheese Company
 Janet Pollack

Presidio Bowling Center
 Pure Barre Marin
 Bruce Raabe & Sara Wardell-Smith
 Red Car Wine Co
 Relevant Wealth Advisors, LLC
 Rex Ace Hardware
 Rialto Cinemas
 Ristorante Piatti
 Rivoli Restaurant
 Robledo Family Winery
 Rock Wall Wine Company
 Ross Valley Players
 Pat Rougeau
 Rustic Bakery Corporation
 Safeway Open
 Safeway, Inc.
 San Anselmo Inn
 San Francisco Bay Adventures
 San Francisco Giants
 San Francisco Giants
 Community Fund
 San Francisco Symphony
 San Rafael Pacifics Baseball Club
 Robert & Shirley Sanderson
 Dale Satake
 Saylor's Restaurant & Bar
 Scandia Family Center
 Scoma's Sausalito
 Shelley & Company
 Shineology Car Washes
 Simon Breitbard Fine Arts
 Six Flags Discovery Kingdom
 Smuin Ballet
 Soft Shell Spa
 Sonoma Canopy Tours
 Sonoma Portworks
 Speedway Children's Charities /
 Sonoma Raceway
 Jacqueline & David Spielberg
 Spirit Rock Meditation Center
 St. Francis Winery
 St. George Spirits, Inc
 Style Bar
 Sumbody and the Sumtime Spa
 SusieCakes

Sweet B Organizing
 Taylorblue Designs
 The Crucible
 The Spanish Table
 Three Sisters Nail Salon
 Three Twins Ice Cream
 Toy B Ville
 Trader Joe's
 Trader Joe's Co
 Kellie Turturici
 Tuthilltown Spirits
 Vanda Floral Design
 Vertex Climbing Center
 Victoria Webb Photography
 Vin Antico
 Wine & Design/Jackie Datnow
 Wine Country Cyclery
 Larry Woodland
 Woody's Yogurt Place
 World Centric
 Yoga Hell
 Zenni

events, office administration, and program support.

Lisa Bakamis
 Byrd Baldwin
 Jamie Behrendt
 Annette Bekowich
 Lisa Berardi
 Lani Blue Taylor
 Deanna Brock
 Justin Burt
 Cakes4Kids
 Lydia Cameron
 Cheryl Cinelli
 Extra Food
 Jennifer Gotti
 Elizabeth Kulavic
 Shannon Matthiesen
 Denisse Mendoza
 Douglas Murray
 Maggie Paula
 Jasmine Reinhardt/
 Marin County Parks
 Crys and Katelyn Roman
 Carole Shook
 Serpico Landscaping
 Jacqueline Spielberg

HOLIDAY GIVING COMMUNITY PARTNERS

The following generous community partners help make sure that every Side by Side client has a gift for the holidays.

Book Passage
 Kids Bike Lane
 Marin Country Mart
 Mill Valley Middle School
 Secret Santa of Sonoma County/
 Center for Volunteer and
 Nonprofit Leadership
 Temple Beth Shalom (San Leandro)
 Zocalo Coffeehouse

VOLUNTEERS

Side by Side gratefully thanks the volunteers and organizations listed below who have spent countless hours helping with our 2019-20

In preparing this report, we made every effort to ensure that it is accurate and complete. If there is an error or omission, please accept our apologies and notify the development department at development@sidebysideyouth.org or 415-457-3200 ext. 179 so we can correct our records. This report lists all cash gifts received between July 1, 2019 and June 30, 2020. Cash gifts made after that date will be published in next year's report. In-kind gifts associated with an event held during the 2019-20 fiscal year are included in this report regardless of the date of receipt.

WAYS TO GIVE SidebySideYouth.org/ways-to-give



Monthly Giving Switch to sustained monthly giving via credit card to provide Side by Side with regular support we can count on.



Legacy Giving Leave a lasting legacy by designating a future gift through your estate plan.



Company Match Increase the value of your gift by taking advantage of your workplace's matching gift program.



Stock Gifts of appreciated securities can be an easy way of making your charitable dollars go further.



Vehicle Donations Have an old car taking up space in your driveway or a need to free up your boat slip? Donate it to Side by Side!



EScrip Raise money for Side by Side each time you shop at United Markets, Woodlands Market, Oliver's or other local grocery stores!



Give In Kind Contributions of donated goods and services help stretch our program budgets that much further.



Online Donations You can make a gift securely online at SidebySideYouth.org anytime, day or night.



300 Sunny Hills Drive, Bldg. 5
San Anselmo, CA 94960

Return Service Requested

POSTAGE
PAID



Come Celebrate Alongside Us This Year

MARIN VALENTINE'S BALL

February 6, 2021

Held virtually this year, the ball raises funds for Side by Side, North Bay Children's Center, and the Godmothers of St. Vincent's School for Boys (affiliated with Catholic Charities). The event features a delicious four-course delivered meal and online auction, as well as special recognition of former SBS board member and MVB Trustee Bruce Raabe with the Hal Brown Memorial Philanthropy Award.

POOLSIDE TEA PARTY

May 20, 2021

Each year, Side by Side recognizes our incredible guild members for their years of service. This year, this invitation-only event will be held on our San Anselmo campus next to our newly renovated therapeutic pool.



BANK OF MARIN GOLF TOURNAMENT

June 28, 2021

June wouldn't be the same without this signature tourney, now in its 27th year! Our golf tournament is moving to the Marin Country Club in Novato this year -- we hope to see you on the links!



REACH FOR THE STARS GALA

September 18, 2021

Plans for an elegant evening on a private estate in San Rafael are being hatched...watch for more information about our biggest fundraiser and best party of the year!

To purchase tickets, become a sponsor, or for more information about any of these events, visit SidebySideYouth.org/events