



WITH **YOUTH**,  
THROUGH ADVERSITY

SidebySideYouth.org

# ANNUAL REPORT 2022-2023 At a Glance



*Together, We Can!*

**2578**  
Youth and Family  
Served



**Time Spent  
with SBS Clients**

**13,031 hours**  
of clinical service

**124,678 hours**  
of therapeutic  
classroom time

**4,133 hours**  
of school-based  
peer support  
groups & classroom  
sessions



## Board of Directors

Deanna Brock, *President*  
Howard Schomer, *Vice President*  
Tim Myers, *Treasurer*  
Ryan Stone, *Secretary*  
Danielle Adams  
Melissa Blach  
Jennifer L. Gotti  
Bernadette Miller  
Ina Miller  
Joy Phoenix  
Vamsey Palagummi  
Darwin Pangilinan  
Dale Satake

## Agency & Program Leadership

Christine Isana Garcia, *Chief Executive Officer*  
Jamila McCallum, *Chief Program Officer*  
Alan Hencky, *Chief Finance Officer*  
Karen Bischoff, *Director of Property and Risk Management*  
Sheila Aceves, *Director of Development*  
Tiffany Vigil, *Director of Human Resources*  
Jolene Yee, *Director, Irene M. Hunt School*  
Matthew Holt, *Regional Director, East Bay*  
Denisse Mendoza, *Regional Director, North Bay*  
Beatriz Behrens, *Program Manager, Community Counseling North Bay*  
Jasmine Cervantes, *Program Manager, Our Space*  
Ahnjolieque Haskins, *Program Director, Real Alternatives*  
Vernon Pope-Banks, *Program Manager, YouThrive*  
Laura Taylor, *Program Director, TAY Space*

## Editorial Team

Katie Rice Jones, *Editor-in-Chief*  
Sheila Aceves, Jasmine Cervantes, Marla McLaughlin, Denisse Mendoza, Katie Rice Jones, and Julie Quater, *Writers*  
Katie Ravas for Drew Altizer, Paige Green, Andrew Hida, and Katie Rice Jones, *Photographers*  
And Them, *Designer*

*On the Cover: Staff at All-Hands 2023 meeting in team-building exercise at the Side by Side campus in San Anselmo. (Left to right: front row, Ken Taylor and Alliyah Taylor; back row, Maggie Paula, Tiffany Vigil, and Erica Antonio) Cover Photo: Katie Rice Jones*



## LETTER FROM CHRISTINE

### *Community, home, and the ability to dream*

The support for Side by Side from donors, funders, volunteers, and friends like you has helped our youth and families create community, find a place to call home, and renew dreams deferred or lost. But the need continues to be great and **it's going to take each and every one of us to enhance the support for marginalized youth and families.**

Still, it's been a successful year and I want to highlight a few things from this year's Annual Report that we are proud of.

1. Our clinicians across regions provide first-line, best-practices trauma treatment to clients who need it. We are one of the few non-profit agencies that can offer Eye Movement Desensitization Reprocessing (EMDR) and Trauma-Focused CBT (TF-CBT) to our clients.
2. We had an incredibly successful Capital Campaign that increased student capacity to 72 students at the Irene M. Hunt School. However, even with more students attending the school, we have additional youth awaiting admission when more space is available.
3. We celebrated ten years of holding our annual Queer Love Youth Pride event where LGBTQIA+ youth and allies can feel pride and celebrate the rainbow of diversities in their identities.
4. Santa Rosa School District (SRSB) officially recognized the agency for supporting district students during school violence and community disruption threats.
5. We launched a partnership with Pegasus in Petaluma where North Bay clients build self-confidence, compassion, and knowledge by working with horses.
6. Last but certainly not least, we received a prestigious Excellence in Innovation Award from the Center for Volunteer and Non-profit Leadership for our *Raíces Unidas* initiative, serving Latinx immigrant students and their families.

We are proud of the work we do. However, our work faces ever more significant challenges due to a tidal wave of change at the county and state levels that impacts how we run our programs. In short, due to changes in how governmental contracts pay for our services, we are receiving less support, and yet continuing to serve more youth and families. Our needs and those of our clients are severe and significant.

Of course, your donations are always welcome, but there are also other ways you can support our mission. Perhaps you might consider volunteering your time with us, joining our Board of Directors, becoming a Side by Side Ambassador or youth mentor, or using your voice to advocate to the county or state for increased funding to support our youths' academic, mental, and behavioral health services. There are many ways to walk side by side with us.

We are so grateful for your support that enables us to remain strong and provide the best possible services regardless of the challenges we face. Side by side with you, **we can do this.** We can move toward a world free from a youth mental health crisis, where all our youth feel held, lifted up, and can dare, once more, to dream!

All the Best in 2024,

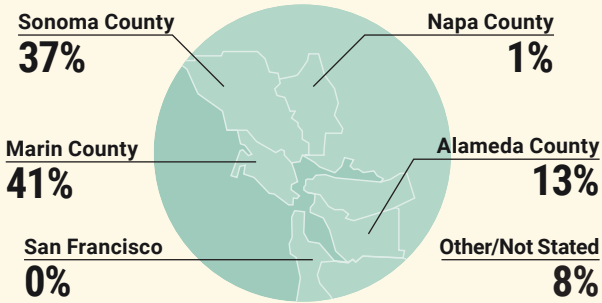
Christine Isana Garcia, Psy.D.  
Chief Executive Officer

# A PORTRAIT OF SIDE BY SIDE

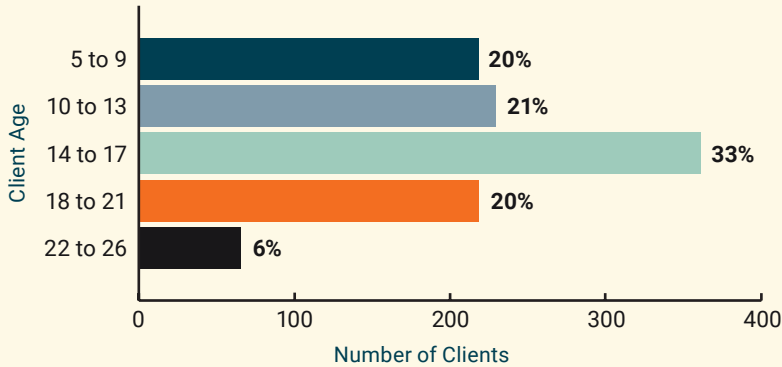
## CLIENTS AND STAFF BY ETHNICITY



## CLIENTS BY GEOGRAPHY



## CLIENTS BY AGE



Clients Served by Multiple SBS Programs: **8.9%**



Clients who are Medi-Cal or Free/Reduced Lunch Eligible: **81%**



## DIRECT CARE STAFF

- 19** Clinicians & Case Managers
- 7** Youth Specialists & Advocates
- 14** Teachers & Behaviorists
- 18** Aides & Teaching Assistants

\* Figures on this page do not include drop-in clients.

# PROGRAM HIGHLIGHTS

**BEHAVIORAL CHALLENGES, EMOTIONAL DIFFICULTIES, AND MENTAL HEALTH ISSUES OFTEN REVEAL THEMSELVES IN CHILDHOOD AND EARLY ADULthood.** These challenges and issues can impact a young person's functioning at home, in school, and in the community. We view our work as a partnership between youth, parents, other caregivers, and treatment team. **Together, we can** help young people identify and understand their feelings, learn effective coping skills, thrive in school, and/or begin to heal from life's challenges.

## IRENE M. HUNT SCHOOL Special Education (Marin County)

180 students served this year

The Irene M. Hunt School in San Anselmo is a non-public day school serving K through 12 students with social, emotional, and behavioral challenges that cannot be supported in the public school system. The overarching goal of the Hunt School is to return students to their neighborhood mainstream schools equipped with the skills to thrive socially and academically. Group and Family Therapy services further support the students and families and help promote earlier and more successful graduations. The school features small class sizes (3:1 student-to-staff ratio) separated for elementary, middle school, and high school and offers a therapeutic environment where students develop the capability to regulate their behavior, maintain focus and resilience, and form healthy, trusting relationships. The academic curriculum is individualized and supplemented with a wide range of enrichment activities and a school-wide positive behavior program. In addition, students receive personalized mental health treatment and other specialized services according to their Individualized Education Program plans. Behaviorists on the Hunt staff provide evidence-based behavior measurements, which result in data-enriched feedback about student progress.



*"In a busy world that often can't or doesn't slow down to ensure that all humans thrive, we take comfort in the fact that Side by Side fills a massive gap for children and their families. Their mission, well-steeped in empathy and devotion, is unparalleled. Side by Side is an obvious granting choice for us."*

- Dawn Shalhoup,  
President, Marin Charitable

### Hunt School Graduation

There are many types of graduations at Hunt School. Some are ceremonial, while others are the everyday sorts intimately known by staff and student. We look to support every student's potential by walking side by side with them to their next step.

# YOUTHRIVE

## K-12 Early Intervention & Prevention (Marin and Sonoma Counties)

968 young people and family members served

YouThrive's early intervention program serves students in grades K through 12. The program aims to prevent social-emotional challenges, truancy, academic failure, drug and alcohol abuse, and the escalation of criminal behavior, gang involvement, and violence while helping young people increase their commitment to their education, personal development, and community. The program offers 10-week group sessions during the fall and spring semesters and is currently embedded in elementary, middle, and high schools in Marin and Sonoma Counties. The groups address anger management, life skills, gang prevention, and restorative justice, as well as higher education. Individual counseling and mentoring is paired with regular monitoring of grades, school attendance, and disciplinary actions. When school behavior, grades and attendance improve, students earn extended trips (beach, theme park, or ballgame) and multi-day excursions (like rafting and wilderness camping). The benchmarks for success include reduced anxiety, depression or other mental health challenges, improved grades, school attendance and behavior, as well as improved relationships with peers and adults in school and at home.



Vernon Pope-Banks and  
Dr. Christine Garcia.

*"The program has helped me be better in school and I liked going on the summer trips and meeting new people. I am ready for YouThrive to start again this semester."*

- Alan G,  
YouThrive client

### Side by Side Receives Special Congressional Recognition

Side by Side was presented with Special Congressional Recognition through the Heart of Sonoma Awards' Excellence in Innovation on June 15, 2023. It was presented in recognition of the agency's outstanding dedication to developing innovative and effective strategies to address critical issues affecting youth in the Bay Area. Side by Side's initiative, Raíces Unidas, serves Latinx immigrant youth and their families to help them overcome the significant challenges they face acclimating to school and their new community.

# TAY SPACE

## Acute Emotional and Mental Health Services (Marin County)

110 young people and family members served this year

TAY Space is a community center in downtown San Rafael for youth ages 16 to 25 who struggle with acute mental and/or emotional disorders including bipolar, schizophrenia, anxiety, and depression. A multi-disciplinary team works with up to 28 youth at any given time to provide individualized treatment plans and case management; links to resources for housing, education, and employment services; and coordinated individual therapy and psychiatric services. TAY Space manages an apartment for qualifying clients in need of transitional housing. TAY Space also functions as a center for any youth in Marin in need of a safe place and a community of other transitional-age youth. On a drop-in basis, TAY Space offers job coaching, substance abuse recovery services, workshops on stress reduction and mindfulness, money management, and independent living skills. Help accessing resources related to education, housing, and employment is available as well. The drop-in center also provides connections to critical social opportunities such as in-center games, potlucks, and birthday parties plus outside movies and field trips. Twice a week the center also serves as a food distribution point for hungry youth and stocks an emergency closet with toiletries, diapers, sanitary supplies, and basic clothing. The goal of TAY Space is to help transitional age youth gain the foothold they need to thrive beyond their diagnoses and histories.



*“Las reuniones con Carla son verdaderamente un alivio ya que se cuenta con total confidencialidad y uno puede expresarse de una manera muy amplia. Cabe mencionar tambien que las actividades que TAY realiza son divertidas; compartir de vez en cuando con ellos es muy relajante. Un equipo muy respetuoso y dulce, el cual siempre busca ser de gran ayuda.”*

**- Dennis,  
TAY Space client**

*(Translation)*

*“My meetings with Carla provide me with great relief given that they are confidential and I can express myself freely. It is also worth mentioning that TAY hosts really fun activities, and hanging out with them is very relaxing. They are a very respectful and sweet team of people, always looking for ways to help.”*

### Potlucks, Parties, and People

*TAY Space celebrates the lives of youth every day and in every way. Providing a safe space to be oneself and to meet others doing the same, TAY Space helps facilitate authentic communities for the young people we serve.*

# COMMUNITY COUNSELING

(Alameda, Marin, Napa, and Sonoma Counties)

700 young people and family members served this year

Side by Side's Community Counseling services are individualized and offered throughout Alameda, Marin, Napa, and Sonoma Counties for youth between the ages of 5 and 26. Informed by a holistic understanding of the young person's history and strengths, this program supports the development of coping skills and strategies to help the young person function more effectively, attain stability, and develop a sense of personal agency. A spectrum of community-based services is offered to respond to the specific needs of the young person and their family. This includes a range of, "school-based," and clinic-based services to K through 12 students in Alameda, Marin, Napa, and Sonoma public schools that include individual and family counseling, therapeutic groups, medication evaluation/support (at our Santa Rosa office), and IEP counseling support. Outside of school, Side by Side also offers individual, family, and group counseling, evidence-backed therapies to treat trauma, such as EMDR and TF-CBT, as well as medication evaluation/support to youth and their family members.



*"It's where we have laid down  
our heaviest burdens, greatest fears,  
and most profound grief."*

– Mother, Sibling  
CCNB Clients

*"We just started the program this week!  
At this point I did not know what to do. TBS is like a  
lifeline for me and my family. Having a daughter with  
challenging behavior is overwhelming sometimes.  
But thanks to the support, I am hoping to gain the  
tools and confidence to navigate these challenges  
effectively. I'm hoping to be a better parent  
and hope our family life improves."*

– Lekisha,  
mother of a 12-year-old CCNB client

*"I really like working with my behavioral  
coach because he helps me learn new skills  
and different ways I can use them in my everyday life.  
It's like having a toolkit for my  
mind, and it's made a world of difference in  
how I handle things."*

– Jose,  
14-year-old IHBS client from Point Reyes

# OUR SPACE

## LGBTQIA+ Support (Alameda and Marin Counties)

260 young people and family clients served this year

Our Space provides a vibrant safe space located in Hayward where LGBTQIA+ youth ages 13 through 24 can express their authentic selves and feel seen, accepted, and celebrated. Our Space also provides specialized support services for adult caregivers and families, as well as training for staff from schools, clinics, and other service providers working with LGBTQIA+ youth. The workshops for professionals deepen their understanding of LGBTQIA+ youth challenges and increase their effectiveness in addressing those issues. As the only youth LGBTQIA+ provider in Southern Alameda County and serving over 260 queer and trans youth and families each year, Our Space receives referrals for disconnected LGBTQIA+ youth in the foster system who are at high risk of further isolation, or are unhoused due to their sexual orientation, gender identity, or gender expression. Approximately 75% of Our Space members are youth of color. The program also offers LGBTQIA+ peer support groups in schools, community-based mental health and one-on-one case management, intergenerational community-building activities, paid youth leadership opportunities, as well as a community center with drop-in hours, a gender-affirming clothing closet, life-skills workshops, and monthly community days.

Our Space additionally partnered with Side by Side's YouThrive life-skills program to provide weekly virtual support groups for LGBTQIA+ students at College of Marin. Through the groups, College of Marin students can make new friends, learn something new, and connect with other queer, trans, nonbinary, and intersex folks on campus. Skilled facilitators also lead discussions about college life, healthy relationships, chosen family, and building community.



*"Since 2020, Kaiser Permanente has been a proud supporter of Side By Side as they work to support and outreach to LGBTQIA+ and Latinx youth in Southern Alameda County. With a mission to improve health in our communities, we are humbled to partner with Side By Side as they work to mitigate adverse childhood events (ACEs), trauma, and isolation among youth and help them build resilience and thrive."*

**- Lloyd Nadal, MA,  
Community Health Manager  
Oakland/Alameda County, Kaiser Permanente**

### A Closet Full of Possibilities

*What we wear helps us express our authentic ourselves. That's why the Our Space Closet offers a free shopping experience for our clients.*



# REAL ALTERNATIVES

## Supportive Transitional Housing for Foster and Probation Youth (Alameda County)

37 young people and family members served this year

Located in Hayward, Real Alternatives offers a continuum of transitional housing opportunities throughout Alameda County for current and former foster youth and/or those on probation ages 18 through 24. Beds are available in a range of living accommodations including one to three-bedroom apartments. For all participants, the program provides a safe environment for youth to take responsibility for their lives in as many areas as possible and develop goals for the future, all the while having a safety net. Supported by our staff, youth learn to budget and pay bills, shop for groceries and cook, live with a roommate, pursue an education, and find and maintain employment. All Real Alternatives clients have access to mental health services and are also supported in building and/or repairing relationships, learning new coping skills, and managing any mental health symptoms. Crisis intervention and emergency support are available 24/7. In a five-year longitudinal study of Real Alternatives, Side by Side found that graduates had high levels (98%) of stable housing and similarly high levels (92%) of high school graduation rates. For more information on the study and its results, visit [www.SidebySideYouth.org/programs](http://www.SidebySideYouth.org/programs).



*"Side by Side has been supportive throughout my time with the program. The Real Alternatives team gives support, while helping us live independent lives."*

– Taylor,  
Real Alternatives client

### The Making of Building Home Filmed at Real Alternatives and TAY Space

During the making for our recent client video—Building Home—we got to know two of our clients better—Maya from Real Alternatives and Sky from TAY Space. A crew of three—director, camera person, and producer had the pleasure of visiting the program locations in Hayward and San Rafael and learning more about Maya's and Sky's stories.

Side by Side walks with young people impacted by adversity on their unique journeys to heal from trauma, restore resilience, and embrace their potential.

To watch Building Home, visit [SidebySideYouth.org/videos](http://SidebySideYouth.org/videos)

# MUTUAL APPRECIATION – WORKING TOGETHER WITH ANIMALS

Two Side by Side programs work with animals to build confidence, heal, spread love, and obtain self-knowledge.

## COMMUNITY COUNSELING NORTHBAY X PEGASUS



Pegasus Riding School in Petaluma is a community-based organization (CBO) that believes in the healing magic of horses. They offer private lessons to the public and the same services, free of charge, to at-risk youth in our community. Side by Side offers referrals to Pegasus to connect with the local community.

Horses make good teachers because they show compassion to others through their body language. The Pegasus' horses are prized for their calm, strong, and steady demeanor. Side by Side sees many therapeutic benefits of horseback riding for our clients:

- Engenders empowerment
- Builds self-esteem
- Teaches respect and empathy
- Improves balance and coordination
- Connects us to the natural world
- Fosters deeper compassion

Our youth enjoy being outdoors and forming a relationship with Pegasus' horses and perhaps, the horses appreciate it too.

To learn more visit - [PegasusRidingSchool.org](http://PegasusRidingSchool.org)

## IRENE M. HUNT SCHOOL X RANCHO COMPASIÓN



Irene M. Hunt School Classroom 3 (the classroom serving students in grades 3 through 5) has partnered with Rancho Compasión in nearby Nicasio to create an educationally enriching series of field trips and classroom activities. Every month, the students look forward to their visit after spending time in the classroom learning about the domesticated animals and the mission of the Rancho Compasión sanctuary.

Rancho Compasión, founded in 2015, in the beautiful hills of West Marin, provides a "forever home" to rescued farm animals. The non-profit sanctuary offers a safe haven for over 80 animals of 10 different species.

Providing the Hunt School students with access to field trips gives them a much-needed sense of community connection, empowerment while fostering greater confidence in themselves and greater compassion for all living things. Something everyone and every creature can appreciate.

To learn more visit - [RanchoCompasion.org](http://RanchoCompasion.org)

# THE CAPITAL CAMPAIGN CULMINATION



**IN SEPTEMBER 2023, SIDE BY SIDE COMPLETED MOST OF THE LONG-AWAITED IRENE M. HUNT SCHOOL RENOVATION AND EXPANSION, AND STUDENTS AND STAFF MOVED INTO THE NEW FACILITY.**

Providing adequate space that supports a rigorous and therapeutic education for all our students and reducing our waiting list by increasing enrollment are the most important measurable outcomes for this project. Leveling the playing field for Hunt students academically is important to assure they can seamlessly transition to mainstream schools, and explore possible careers in all fields including science and technology.

## THE CAPITAL CAMPAIGN GOALS REALIZED



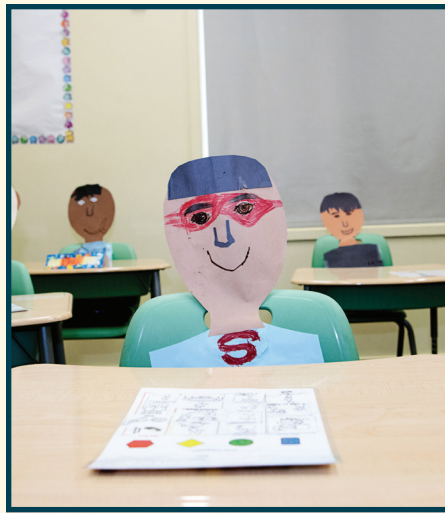
**GOAL 1** Double the size of the high school classrooms from 25 feet per student to the recommended minimum of 50 feet. As Hunt School students frequently need to move to help themselves self-regulate, adequate space is imperative, particularly for high school students.



**GOAL 2** Create a dedicated Art Room, as well as a STEM Lab on par with other Bay Area schools. Having a STEM experience comparable to other Bay Area students is crucial for Hunt students. A dedicated Art Room allows students to explore self-expression and artistic communication at a deeper and more impactful level. Both add an educational component that fosters their social and emotional development.



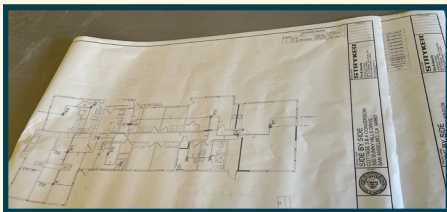
**GOAL 3** Double the number of calming spaces in the high school building to provide a critical therapeutic tool. Our new Serenity Space provides a safe space for dysregulated students to learn how to calm themselves, and practice resilience, and self-control. Having adequate calming spaces more effectively reflects the range of developmental levels.



**GOAL 4** Accommodate an additional eight middle and high school students. This expansion enables the school to increase enrollment from 64 to 72 students. The Hunt School has a waiting list in many grades. An expanded classroom equals an expanded group of youth receiving important services.



**GOAL 5** Refurbish the gymnasium. State of the art Pulastic flooring was installed, as was a new water bottle fountain, and other needed equipment was purchased. By improving its use as a multipurpose room, it has become a safe, flexible space for physical education and schoolwide activities that both meet our students' unique and varied needs, and serve to provide community building and out-of-classroom learning opportunities. Students at the Oak Hill School (for students on the autism spectrum), a tenant of Side by Side, will additionally benefit from these upgrades.



**GOAL 6** Create dedicated spaces for meetings and therapy sessions. New configurations created an occupational and speech therapy room, individual therapy offices, a conference room with video capabilities for parent/school district conferences, staff meeting/training space, and an easy access point for parents and school district partners.

## THANK YOU TO OUR GENEROUS DONORS

The Hunt School has evolved significantly over the years. The new campus supports Hunt's exceptional staff's ability to make a difference in their students' lives. All of us at Side by Side and the Hunt School are deeply grateful to all our capital campaign partners who made this important project possible.

### ORGANIZATIONS

Arntz Builders  
Arntz Family Foundation  
Bank of Marin  
BioMarin Pharmaceutical, Inc.  
Bothin Foundation  
Chevron Matching Gift Program  
County of Marin - Marin Community Partners  
Fenwick Foundation  
Hobson/Lucas Family Foundation  
Intuitive Foundation  
Jay Pritzker Foundation  
Marin Community Foundation  
Red Hill Shopping Center  
The Stocker Foundation  
Ticknor Foundation

William G. Irwin Charity Foundation  
Zierk Family Foundation

### INDIVIDUALS

Anonymous  
Danielle Adams  
Sharlyne Balano  
Mr. and Mrs. Seth Barad  
Paula and John Beritzhoff  
Karen Bischoff and Ed Boisson  
Deanna Brock and Daniel Freeman  
Wendy & John Buscaglia  
Mr. and Mrs. Phil Byer  
Lydia and Tony Cameron  
Barbara Carbone and Gregg Lyman  
Bruce Carlson  
Mr. David Clayton and Ms. Gayle DeKellis  
Mr. and Mrs. Eric Clothier  
Cynthia Cornell  
Mr. David Egan  
Jennifer Gotti  
Charles Grieve  
Martí and Tony Grimminck  
W. Robert Griswold Jr. & Alexandra Griswold  
Ms. Nannette Griswold  
Mr. and Mrs. J. Patrick Hunt

Dr. Catherine Kennedy and Mr. Daniel Grossman  
Chuck Grieve and Deanne LaRue  
Ms. Elisabeth Levy  
Carleton MacDonald  
Connie Matsui  
Glenn and Dayna Meyers  
Tim and Oksana Myers  
Thomas and Susan Monahan  
Alyssa O'Hare  
Joy and James Phoenix  
Bruce Raabe and Sara Wardell-Smith  
Mr. and Mrs. David Rabb  
Ms. Dale Satake  
Kimberly Rochat and Howard Schomer  
Mr. and Mrs. Mike Shepard  
Mr. and Mrs. John Shook  
Mr. and Mrs. David Spielberg  
Ryan Stone  
Mr. and Mrs. Raymond Syufy  
Darcy and Don Tarantino  
Mike and Sondra Van Metre  
Mr. and Mrs. Rich Walcoff  
Jeffrey and Deborah Weber  
Katherine Woolard  
Jolene and Jeff Yee

# TOGETHER WITH YOUTH FOR 128 YEARS



**1895**  
Founding as San Francisco Presbyterian Orphanage and Farm



**1898**  
Captain Robert Dollar donated funds to acquire 20 acres



**1899**  
The first Grape Festival



**1920**  
Captain Dollar donated the funds to acquire additional 42.6 acres



**1930**  
Name changed to "Sunny Hills."



**1965**  
Cottages and administrative buildings erected on San Anselmo campus



**1967**  
Name change to "Sunny Hills Children Services."



**1989**  
James R Sylla School opened on the Sunny Hills campus



**1995**  
The Bank of Marin Golf Tournament established



**2006**  
Final Grape Festival



**2007**  
YouThrive merged with the Bay Area Youth Center in Alameda County, such as Real Alternatives



**2016**  
Earned the Joint Commission Gold Seal Approval



**2018**  
Rebranded as Side by Side



**2020**  
Launched virtual services launched across the agency to contend with the COVID-19



**2022**  
Reaccredited by the Joint Commission



## TODAY

Side by Side serves more than 2578 youth and their families with six programs

**SIDE BY SIDE HAS A RICH HISTORY OF SERVING YOUTH FOR OVER 128 YEARS. DURING THIS TIME, IT HAS BECOME A VITAL AND DIVERSE AGENCY. WHILE PHYSICAL BUILDINGS CAME AND WENT OVER THE YEARS, AND THE FACE OF CLIENTS AND STAFF CHANGED, THE SPIRIT OF SIDE BY SIDE HAS NOT WAVERED.** We have been there for our youth through every adversity they confront and through your support, remain committed to helping each youth find their potential. We are so immensely proud of our history and given this is our Annual Report, we thought it would be a fantastic opportunity to revisit (and share) our agency's timeline with you.

**1895**  
The agency was founded as the San Francisco Presbyterian Orphanage and Farm when a local, young widow died, leaving behind three young children. The orphanage initially opened in a small, rented house in San Rafael, California.

**1898**  
Captain Robert Dollar, a philanthropist and global shipping magnate, donated money to the orphanage to acquire 20 acres in the town of San Anselmo, California. A large building on the land was constructed (on the hill just above what is now Red Hill Shopping Center) and completed on July 8, 1900. Unfortunately, a fire burned

down the building in 1920 and the orphanage was soon after rebuilt.

**1899**  
The first Grape Festival kicked off—a beloved annual fundraiser that would continue for 105 years—supported first by community members, and then the Guilds of Sunny Hills (in their heyday numbering 38 active guilds and 1,500 volunteers).

**1920**  
Captain Dollar donated the funds for the purchase of an additional 42.6 acres of pastureland to the orphanage.

**1930**  
San Francisco Presbyterian Orphanage and Farm formally

changed its name to "Sunny Hills."

**1950**  
Bargain Box Thrift Shop was founded by the Junior Auxiliary Guild in support of Sunny Hills.

**1955**  
The expansion of foster care and government aid after World War II changed the need for institutional care. In response, the Child Welfare League of America requested that Sunny Hills begin a program to provide highly-individualized care for troubled adolescents.

**1965**  
Residential cottages for up to 40 adolescents, and the other administration buildings were

built on the San Anselmo campus.

**1967**  
Sunny Hills legally changed its name to "Sunny Hills Children Services."

**1989**  
Bargain Box moved to a permanent location on Irving Street in San Rafael. Also in that year, James R. Sylla School opened on the Sunny Hills campus to provide special education to adolescent residents.

**1995**  
The Bank of Marin Golf Tournament established by J. Patrick Hunt, founder of Bank of Marin.

**2006**  
105th and final Grape Festival is held in Larkspur Landing.

**2007**  
After 100 years of serving Sonoma County, youth offices established in Santa Rosa. Services expanded to include YouThrive in 2008 and merged with the Bay Area Youth Center in Alameda County, expanding which included Real

Alternatives in 2010.

**2016**  
Earned the Joint Commission Gold Seal Approval for behavioral healthcare accreditation.

**2018**  
Rebranded as Side by Side to better capture the essence of the relationship with youth that we serve across a diverse array of programs.

**2020**  
Virtual services launched across the agency to contend with the COVID-19 pandemic and innovate outreach strategies, including FIFA soccer tournaments and an art contest.

**2022**  
Reaccredited by the Joint Commission.

**TODAY**  
Side by Side serves more than 2578 youth and their families with six programs in Alameda, Marin, Napa, and Sonoma Counties.

# TOGETHER, WE CAN!

THANKS TO YOUR INVESTMENT IN OUR PROGRAMS THIS YEAR, SIDE BY SIDE HAS MADE A SIGNIFICANT DIFFERENCE FOR MANY BAY AREA YOUTH AND THEIR FAMILIES. WE COULD NEVER FULLY EXPRESS HOW MUCH WE VALUE YOUR SUPPORT.

Our staff has seen the need in our community continue to grow. Referrals are accelerating. Demand for our school-based services is at an unparalleled level. Even as the immediacy of the pandemic recedes, youth continue to experience anxiety, depression, anger, and burnout. These mental health challenges are not new, but what has changed is the acuity of the challenges. The case management required to support these youth has grown significantly, with each client needing multiple resources. These days, our dedicated staff work to provide multiple services—assistance with housing and food, homework help, and navigating the school services system—beyond just addressing a youth's depression or anxiety.

*But because of your help in sustaining our programs, Side by Side is meeting that need for youth.*

At TAY Space, Side by Side's community center for youth 16 through 25 who struggle with mental and/or emotional disorders, our client Sky is dealing with issues that cause them to feel unsafe and unstable. After being unhoused for much of their teen years, Sky found TAY Space in San Rafael. At TAY, Sky works with a clinician and other support staff who help them learn coping strategies. As Sky gains confidence in their ability to handle their emotions and the daily challenges that once seemed insurmountable, their clinician Carla continues to provide perspective and encouragement. Side by Side's work with Sky helps make their world a less overwhelming, more manageable place every day. Sky feels so much more empowered to move forward. These small steps we take alongside our clients become a journey of milestones and accomplishments. And those journeys could not happen without you.

*Your support of our work truly offers brighter futures for those who often meet us in the dark moments of their lives.*

We hope you'll continue to support the critical services Side by Side offers. Your generosity will impact our community for years to come.

**TO DONATE, visit [SidebySideYouth.org/donate](https://SidebySideYouth.org/donate)**



To learn more about Sky's story, visit [SidebySideYouth.org](https://SidebySideYouth.org)'s Homepage and click on "play video" located on the web banner.

# SIDE BY SIDE COMMUNITY-RAISERS

HERE IS A GLIMPSE OF THREE OF OUR MULTI-FACETED COMMUNITY-DRIVEN EVENTS IN 2023.

## BANK OF MARIN GOLF TOURNAMENT

On **June 26, 2023**, Bank of Marin held its 29th annual golf tournament benefiting Side by Side. Over 140 golfers came out to test their skills on Meadow Club's course including the bank's and the tournament's founder, J. Patrick Hunt. Overall, the event raised \$61K for Side by Side's youth mental health services.



## QUEER LOVE YOUTH PRIDE EVENT

Our Space celebrated their 10th anniversary of Queer Love Youth Pride (QLYP) on **July 22, 2023**, at the Reach Ashland Youth Center in Ashland. The event was produced by Side by Side Our Space Staff and Our Space clients. The QLYP Event celebrates LGBTQIA+ interconnectedness, performance, and brilliance. A former Our Space client emceed the six solo acts and one group performance. The acts included song, dance, spoken word, instrumental music, and a drag performance. In addition to the performers, community partners and local craft and food vendors were on hand to support this community event focused on Youth Pride.



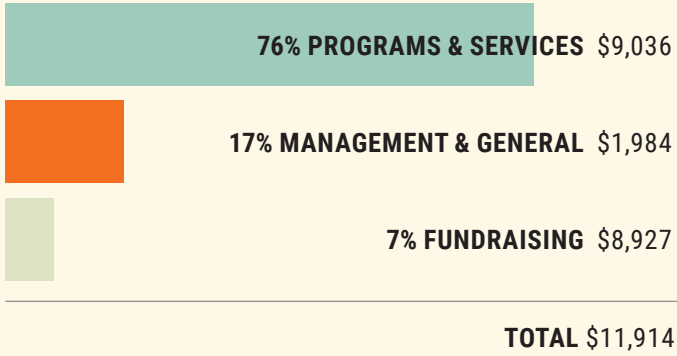
## REACH FOR THE STARS GALA

Side by Side's Reach for the Stars Gala shone brightly with community service and community stars. The Reach for the Stars gala took place at the Mill Valley Community Center on **November 4, 2023**, and raised over \$145k for Bay Area youth mental health services. Produced by Side by Side, the Reach for the Stars gala hosted 175 attendees who traveled from far and wide to enjoy supper-club-style cocktails and dining, jazz music, and a post-dinner DJ set by D Sharp, the Golden State Warriors official DJ. Attendees heard from Side by Side's CEO, Dr. Christine Garcia, about the current youth mental health crisis and the agency's mission. California State Senator Mike McGuire was also on hand to support the event as the night's honorary emcee.

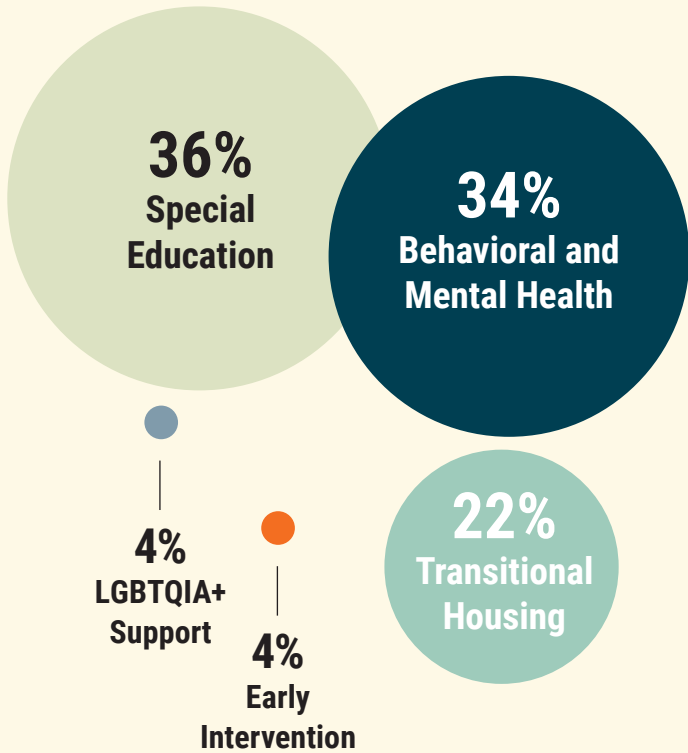


# FINANCIALS

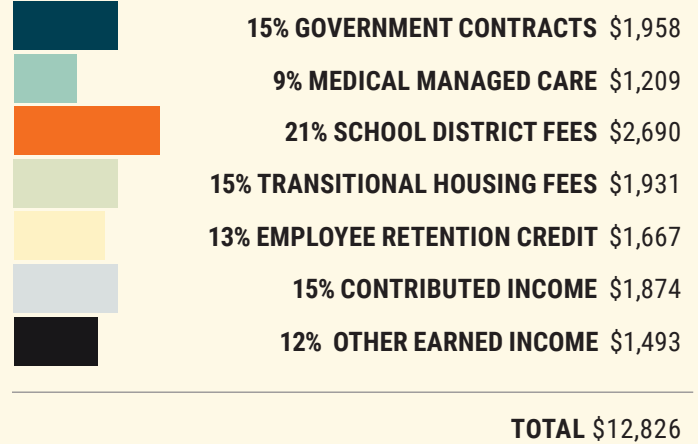
## EXPENSES BY TYPE (% and 000's)



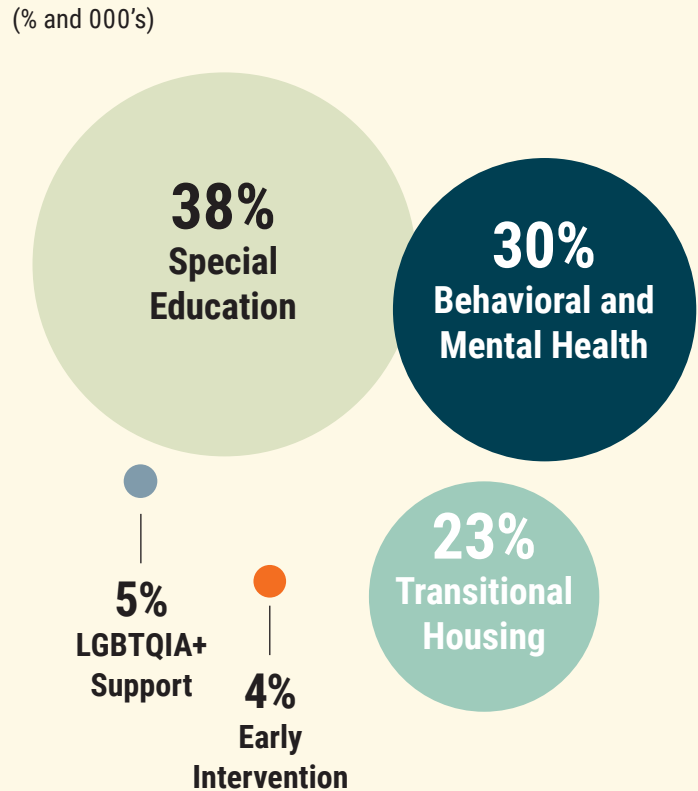
## EXPENSES BY SERVICE AREA (% and 000's)



## REVENUE BY TYPE (%)



## REVENUE BY SERVICE AREA (% and 000's)



## FINANCIAL POSITION (000's)

**Total Assets**  
\$23,333

**Total Liabilities**  
\$17,524

**Total Net Assets**  
\$5,808

\* In FY23, SBS adopted Accounting Standards Update No. 2016-02 Leases (Topic 842) and elected not to restate the prior year for comparative purposes. The FY23 impact on the Statement of Financial Position was \$12,240,725 in assets and \$12,242,378 in Liabilities.





## THANK YOU FOR JOINING SIDE BY SIDE ON OUR JOURNEY.

THE FOLLOWING GENEROUS SUPPORTERS GAVE SIDE BY SIDE CASH GIFTS BETWEEN JULY 1, 2022 AND JUNE 30, 2023. EACH AND EVERY GIFT, NO MATTER THE SIZE, ENABLES US TO WALK WITH THE BAY AREA'S YOUNG PEOPLE IMPACTED BY ADVERSITY ON THEIR UNIQUE PATHS AND PROVIDE THE SAFE SPACE MANY OF THEM HAVE MISSED IN THEIR LIVES. **THANK YOU!**

### \$50,000 +

Bothin Foundation\*\*  
Community Foundation  
Sonoma County\*  
Five Bridges Foundation\*\*  
Dr. Catherine Kennedy and Mr.  
Daniel Grossman\*\*  
Marin Valentine's Ball\*  
Walter S. Johnson Foundation  
William G. Irwin Charity  
Foundation\*

Ms. Virginia Harmon  
Healthcare Foundation  
Northern Sonoma County  
Horizons Foundation\*  
Intuitive Foundation  
Jonas Family Foundation\*  
Connie Matsui  
Jacqueline and David  
Spielberg\*\*  
Tipping Point Community\*  
West Davis & Bergard  
Foundation\*

Red Hill Shopping Center  
Marsha Rosenblatt  
Sandia National Laboratories  
Sharks Foundation  
Silicon Valley Community  
Foundation  
Charles Silverman\*  
Speedway Children's Charities  
/ Sonoma Raceway\*\*  
The Stocker Foundation  
Mr. and Mrs. Angus Wilson

David and Tonia Rubin  
Safeway Foundation  
Howard Schomer and Kimberly  
Rochat  
Schultz Foundation\*\*  
Shelley & Company  
Jennifer and Mike Shepard\*\*  
Venable Foundation  
Mike and Kari Zazzara  
Anne Zepecki

### \$25,000 - \$49,999

Bella Vista Foundation\*  
Fullerton Family Foundation\*\*  
J. Patrick Hunt and Frankie  
Hunt\*\*  
LaureL Foundation  
National Association of  
Theater Owners of CA/NV  
Dale Satake  
Sutter Health Eden Medical  
Center  
Sutter Health North Bay  
The Raymond & Ricki Syufy  
Charitable Gift Fund\*\*  
Zierk Family Foundation\*\*

### \$5,000 - \$9,999

AHS Foundation\*\*  
Arntz Builders  
Bakamis Design Group  
Bank of Marin\*\*  
Seth and Amy Barad\*\*  
Barbara M. Burns Foundation  
Deanna Brock and Daniel  
Freeman  
Byer Foundation  
Jay and Shelley Cahan\*  
Center for Volunteer &  
Nonprofit Leadership\*\*  
Cornell Charitable Fund  
Julie and Chris Dolan  
Filice Insurance Agency  
FIS\*\*

### \$2,500 - \$4,999

Ron and Allison Abta  
Autodesk Foundation  
Employee Engagement Fund  
Lois de Banzie  
Bay Area Physicians for Human  
Rights\*  
Belvedere Fund\*\*  
BioMarin Pharmaceutical, Inc.  
Bon Air - Greenbrae\*  
Barbara Carbone & Gregg  
Lyman\*\*  
Lyndsey and Jimmy Conrad  
Mary Denton & Monte  
Deignan\*\*  
Juan and Evelyn Gonzalez  
Jennifer L. Gotti\*\*  
Nannette Griswold\*\*  
Heather Thompson, COMPASS  
Realty  
Heffernan Foundation\*  
Kathlyn McPherson Masneri &  
Arno P. Masneri Fund\*\*  
KPMG\*  
Elena & Dan Little  
Marin Sanitary Service\*\*  
Joe Murphy

### \$1,000 - \$2,499

Active 20-30 Redwood Empire  
#1029\*  
Sarah Anderson  
Anonymous(2)  
Sean Biddinger  
Brown Advisory  
Wendy & John Buscaglia  
Hugh and Luanne Cadden\*  
Sue and Joe Carlomagno\*\*  
John Castro\*  
Leslie and Richard Cohen\*\*  
Dean Duchak  
Edward Pollak Family Fund\*\*  
The Elliott-Blank Family Fund  
Erickson Family Fund\*\*  
John and Candyce Francis  
Joseph Genovese  
Scott and Kara Ghilotti  
The Grateful Dog Inc  
Marti and Tony Grimminck  
W. Robert Griswold Jr. &  
Alexandra Griswold  
Natalie & Louis Harrison  
The Heck Foundation  
Nicolle Henneuse\*\*  
Hubbell Daily Architecture +  
Design

### \$10,000 - \$24,999

Anonymous Fund of MCF  
Bernard E. & Alba Witkin  
Charitable Foundation\*  
Mr. Charlie Clifford and Mrs.  
Holly Hopper\*  
The Eucalyptus Foundation  
Fenwick Foundation\*\*  
Ferrari Owners Charitable  
Foundation  
George H. Sandy Foundation\*\*

Ghilotti Construction  
Company\*\*  
Yoko and Rick Kasai  
KCM Investment Advisors\*  
Robyn and Warren Luhnig  
Diana & Alex Lyman  
Shannon and Taggart  
Matthiesen  
Emily Morris and Javier Soltero

Erica Jacobs  
Jam4Joy  
The Kawaja Family  
Mr. and Mrs. Larry  
Klaustermeier\*\*  
Michael Kruger  
Carrie Lambert  
Mr. and Mrs. James Lazor, Sr.\*\*  
David Lechuga  
Marin Charitable\*\*  
Marin Roto-Rooter\*  
Deborah N. Matthies\*\*  
Bryan McDonald  
Robert and Suzanne  
McLennan\*\*  
McNabb Foundation  
Ina Miller  
Dannette Mitchell  
Montecito Plaza Shopping  
Center\*\*  
Tim and Oksana Myers\*  
Mr. Jon Nakamura  
Novick Family Charitable  
Fund\*\*  
Vince ODriscoll  
Linda and Michael Perrella\*\*  
PG&E Community Investment  
Program\*  
Pizzalina  
Mr. and Mrs. David Rabb\*\*  
Lisa Rapoport and John  
Freeman  
Relevant Wealth Advisors, LLC\*  
Robert H. Greene Real Estate\*  
Robison Family Foundation\*\*  
Royal Grand Ducal Council  
of Alameda/Contra Costa  
Counties\*  
Mr. Chris Rudolph  
Andrea Schultz  
Ricardo Segura  
Karen Seratti and Kevin Asbra  
Hal and Carol Shirley

David Short  
Cherie Sorokin  
Craig Squires  
Olga Stephan  
Stephanie Lamarre, Golden  
Gate Sotheby's International  
Realty  
Ryan Stone  
Darcy and Don Tarantino  
Dennis Thompson  
Tri Counties Bank  
Mr. Richard Ugarte  
Robert Verhoeff\*  
Westamerica Bank\*\*  
Frank & Melissa Williams  
Katherine Woolard  
Zach Fund at East Bay  
Community Foundation\*\*

**\$500 - \$999**

Alten Construction\*\*  
Austin Andrus  
Anonymous(3)\*\*  
Mr. and Mrs. John Bessolo III\*  
Karen Bischoff and Ed  
Boisson\*\*  
Melissa Blach  
Todd and Julie Boes  
Jean and Stuart Brown\*\*  
Justin Burt\*  
Mr. and Mrs. Phil Byer  
Lydia and Tony Cameron\*\*  
Joel Campos  
Claudia Carlson and Jack  
Brenneman\*\*  
Karla Rivera Cervantes and  
Ernie Cervantes  
Chevron Matching Gift  
Program\*  
Amber Childress  
Russ and Lynn Colombo\*  
Mr. Richard Fike and Ms. Sara  
Thorpe\*\*

Susan and Geoff Flint  
Flynkins Fund of Horizons  
Foundation  
Dianne Fowler\*\*  
Nicole Friedland  
Anne Golden  
Christina Hale  
Rebecca and Ray Hathorn\*  
Alan Hencky  
Hennessy Advisors, INC  
Mark and Dale Hillard\*\*  
Joe and Cara Hunt\*\*  
Tom and Diane Johnston\*\*  
Terry Kessler and Francine  
Halberg  
Gene Koziarz  
Chris Kughn  
Lynn Larsen  
Laurie Anne Lassek  
Laurel  
Dr. George Little  
Susan MacMillan  
Carole and Bruce MacPhail\*\*  
Marin Lodge No. 200 I.O.O.F.\*\*  
Mara C. Meisner and Davy  
Crockett\*\*  
Candace Neal-Ricker  
Shari Nemerovski  
Mr. and Mrs. Thomas Obletz\*  
Vamsey Palagummi JD  
Darwin Pangilinan  
Stephane Paquet  
PFLAG Oakland-East Bay  
Mr. and Mrs. James Phoenix\*\*  
Margaret and Nicolas Pierattini  
Purple Lady/Barbara J. Meislin  
Fund\*\*  
Bruce Raabe and Sara Wardell-  
Smith\*\*  
Perry Seto  
Mercedes Shinohara-Taylor  
Carole and John Shook\*\*  
Nicolette Sloan  
Ben and Kristen Swann  
Chris and Kathy Swindle  
Peter Timmerman  
Vivalon  
John and Kathy Woldrich\*\*  
Mr. and Mrs. Darryl Woo\*\*  
Haruki Yee  
Jolene and Jeff Yee

**\$250 - \$499**

Acuant Inc  
Danielle Adams  
Adolph & Jeanne Capurro  
Revocable Trust\*\*  
Samantha Arreolla  
Sidney F. Baker\*\*

Byrd & Jim Baldwin\*  
Julie Ballard  
Jessamy Barker  
Mr. Morgan Beatty and Mrs.  
Winnie Huff\*\*  
Jamie and Joe Behrendt\*  
Guy Benstead  
Aviva Boedecker  
David Cuneo  
Elkin Family Fund\*  
Vendela Fehrm  
Fiona Friedland  
Christine Isana Garcia, PsyD  
Jon Herzenberg  
Diana and Jeffrey Hill\*\*  
Mr. Bill Hogan and Mrs.  
Michele McLellan\*  
Ms. Linda Hothem\*\*  
Ashley and Riley Hurd  
Sally and Mark Jaeger  
Constance Jones  
Shauna and Tom Keenan\*\*  
Christina and Eron Kosmowski  
Elizabeth Kulavic\*\*  
Marilee Lau  
Carleton MacDonald  
Ms. Bonnie Manning\*\*  
Victoria Martin  
Michael and Elizabeth Hatfield  
Charitable Fund\*  
Peggy Moseley  
Jennifer Murray  
Mr. and Mrs. Frank Noonan\*  
Mr. John Owen\*\*  
Cathy Pereira  
PG&E Corporation\*\*  
Ashley and Corey Preston  
Robert Reedy  
Pam and Mark Ross  
Christine Scott\*\*  
Shelagh Smith Giving Fund  
Jeremy Sher  
Noah Snyder  
Mr. and Mrs. Charles  
Stedwell\*\*  
Tom and Rebecca Sylla\*\*  
Steven and Jacqueline  
Tulsky\*\*  
United Markets\*\*  
United Way of North Central  
New Mexico  
Peggy Vaughan\*  
Mr. and Mrs. David Walker\*\*  
Stuart Wallace  
Robert Weeks  
The William and Carol Bryan  
Charitable Fund  
Donald Young and Susan  
Young



### Cookie Challenge, Anyone?

All-Hands 2023 meeting in a team-building exercise called the Cookie Challenge. Here are the rules:

1. Cookies must be placed in the middle of your forehead, not touching your eyebrows.
2. You can tilt your head and move your face, but you cannot touch the cookie with your hands.
3. The cookie must remain in contact with your face at all times. You're not allowed to attempt to flip it from your forehead and catch it in your mouth.





**\$100 - \$249**

Kevin Abaya  
 Sharon Hunsaker Adams  
 David Alcock  
 Todd Aldrich  
 Allan Rappaport Charitable Foundation  
 Pat Allen  
 AmazonSmile Foundation  
 Mr. Robert Anderson and Ms. Suzanne Louise\*  
 Fredrik Andersson  
 Anonymous(3)  
 Chris Arnold  
 Dave Arntz  
 Mario Arteaga and Cindy Arteaga  
 Joel Backman  
 Sanaz Banihashemi  
 Dr. and Mrs. Joseph Basso\*\*  
 Howard and Marilyn Belove  
 Berardi Family  
 Boo Boero\*\*  
 Sue and Pete Bowser\*\*  
 Heather Brock  
 Lynn Brown  
 Ms. Joan Brown  
 Dorothy and Shepherd Burton\*\*  
 Diana Caccamo\*  
 Mr. Matt Cappiello\*  
 Jasmine Cervantes  
 Andrea and Caben Chester  
 Linda and James Christensen  
 Ciena  
 Alice Cogliandro\*\*  
 Angela Barbetta Collins

Dawn Connolly  
 Nora Cooper  
 Tony and Annette Davary  
 Terry and Paul Descalzo\*\*  
 Judy Digiorgio  
 Dave and Cheryl Egan  
 Janet Heley Ekberg  
 Meredith Etherington  
 Kurt Falkenberg  
 Ruth Falkenberg\*\*  
 Erdmuth Folker\*\*  
 Karen Garbarino\*  
 Raul Garcia  
 Ms. Nina Gardner  
 Sharon Gillars  
 Robert Gollan\*  
 Mr. Edward Haas and Ms. Patricia Oji\*\*  
 Ahnjolique Harris  
 Josefine Hederoth  
 John Heliotis  
 Ms. Sherri Hendrickson\*\*  
 Raime Heyneker  
 Tracy and Bill Hogan\*  
 Matthew Holtz & Jacob Loyer\*\*  
 Impact 100 East Bay  
 Karen Jackson  
 Aaron Jones  
 Alison Jones  
 William W. Jones\*\*  
 Mr. and Mrs. Stuart Keirle\*\*  
 Gerry Kelly  
 Rozella and John Kennedy  
 Brian Kim  
 Tommy Lamanna and Shannon Kruger

Karen and Scott Lamson  
 Jan Laret  
 Daniel Levintov  
 Scott and Erica Lindstrom-Dake  
 Sarah Liu  
 William and Paula Jean Loeffler\*  
 Sonya Lopez  
 Shaun Madden  
 Sonya Manning  
 Marin Home and Garden Club  
 Simon McBride & Jasmine Gavam  
 Mr. and Mrs. John McCall\*\*  
 Jamila McCallum  
 Denisse Mendoza  
 The Mettner Family Trust\*\*  
 Barbara Metzger\*\*  
 Bernadette Miller  
 Steve Miller  
 Mr. and Mrs. Minoia\*  
 Glenn and Laura Miwa\*\*  
 Angelica Montalvan  
 Cassandra Monteith  
 Amy & Ryan Morgan  
 Edward Morgan  
 Drew Morrell  
 Audrey and Diego Mosquera  
 Cynthia Murray\*\*  
 Anne Nelson\*\*  
 Linda Noel  
 Yolita Nowak  
 Jessica O'dea-Bumanglag  
 Vince O'Driscoll  
 Mr. and Mrs. Dennis O'Neill\*  
 Ellen and Peter Obstler  
 Ji Park  
 Susan Park  
 Mr. and Mrs. Richard Parker\*  
 Janet and Robert Pawlan\*\*  
 Kasia Pawlowska  
 Pet Emergency & Specialty Center  
 Mr. and Mrs. Dave Peterson\*\*  
 Kaycee Pomeroy  
 Elizabeth Purvis  
 Mr. and Mrs. William Rafferty\*\*  
 Dickson Ranch\*  
 Patricia and Charles Raven\*  
 John Ricco  
 Mr. Frank Ridley\*  
 Ric Rascoe  
 Trista Samole  
 Madeline Schaidler  
 Tim Schulte  
 Oded Schwartz and Ruth Rosenthal  
 David Shapiro  
 Carole and Douglas Sheft\*\*

Andrew Smith  
 Tiffany Song  
 Marcia and David Sperling  
 Walt and Anna Spevak  
 Anindita Spielberg  
 The Stephen & Julie Kimball Charitable Fund\*  
 Julie and Albert Stoll  
 Craig Sundstrom  
 Jamie Sutherland  
 Jerry Suyderhoud  
 Jack Terrell  
 Judy Torrison\*\*  
 Mimi Towle  
 Trusource Consulting Group  
 Mr. and Mrs. Thomas Tucker\*\*  
 Christina Van Winkle  
 Benjamin Vanderford  
 Tiffany Vigil  
 Jason Warner  
 Michael Webb & Patty Mullen\*\*  
 Wells Fargo\*\*  
 Dr. Thomas J. White  
 Julianne Wilhelm  
 Mr. and Mrs. Mordechai Winter\*  
 Leigh and Ashton Wolfson  
 Mr. and Mrs. Jim Wood  
 Joyce Wu

**\$50 - \$99**

Abbott Laboratories Fund  
 Robert Anderson  
 Anonymous(2)\*  
 Vivian Bauer\*  
 Cindy and Bernie Benson\*\*  
 Mary Bramblett  
 Rachel Buck  
 Delaney Burk  
 Leslie Carroll  
 Anna Cecchini  
 LeeAnn Chernack  
 Ms. Diane Connor\*\*  
 Colonel Cope\*\*  
 The Della Valle Family Fund  
 Elaine Dipalma\*  
 Ben Edoukou  
 Jorge J. Enriquez\*\*  
 Nheeda Enriquez  
 P.C. Ernsberger  
 Stephen Fegen  
 Kari Foulke  
 Stanley Gibbs  
 The Gibson Family\*\*  
 Gilead Sciences, INC.  
 Paul Glover  
 J. Golden  
 Ms. Karen Halvorsen\*\*  
 Jessica Hamilton  
 Ms. Inge Hendromartono\*

\* Donors to Side by Side for 10-19 years \*\* Donors to Side by Side for 20 years or more ◯ For the Kids monthly giving donor

The Higgins Family  
Hipline Dance Studio  
The Honorable Paul Kelley  
Mr. and Mrs. Donald  
Humphreys\*  
Patricia Klein  
Cari L. Pace Koch and Bob  
Koch\*\*  
Janice Low  
Zach McReynolds  
Mark Miller  
Kathleen Mullen\*  
Douglas Murray\*  
Norma Neal  
Ms. Ralene Neve\*\*  
Bea Newhall\*\*  
Cheryl Nice  
Greta Olesen  
Barbara and Richard Patchin  
Margaret Paula\*  
Peter and Nina Perl  
Mr. and Mrs. James Phalon\*  
Maggie Polan\*\*  
Kevin Radich  
Theresa Reyes\*\*  
Katie and Ronnie Ronos  
Janet Smith\*\*  
Barry Spitz  
Ruth & Larry Stotter\*\*  
Cheryl Thevenet  
The Thomas and Susan Moore  
Family Fund of the Ayco  
Charitable Foundation\*\*  
Tim Van Voris  
Ms. Beth Voorhees\*\*  
Mr. and Mrs. Robert Willard\*\*  
Judith Wilson\*\*

#### **GIFTS IN HONOR OF**

LH Caalim  
Charlie Carr  
Mary Denton  
Richard Harmon  
Irene M. Hunt School  
Marissa Johnson  
Joy Phoenix  
Lillian Pounds  
Marsha Rosenblatt  
Hayden Rubin  
Katrina Steffek  
Ricki Syufy  
Edi Wipf

#### **GIFTS IN MEMORY OF**

Leslie Barker  
Zona Bauer  
Helen Dennis  
Mary Eschen  
Devora Harrison  
Aaron Jones

Carter O. Belove  
Reemajah Pollard  
Antonia Ruffermann  
Ginger Sylla Egan  
Dolly Torrison  
Robert Vaughan  
Tamika Williams-Clark

#### **GOVERNMENT CONTRACTS & GRANTS**

Alameda County Department of  
Child & Family Services/Youth  
Acceptance Collaborative  
Alameda County Behavioral  
Health & Recovery Services  
Beacon Health Services  
County of Marin Behavioral  
Health & Recovery Services  
County of Sonoma Family,  
Youth and Children's Services  
Kaiser Permanente - Northern  
California  
Napa County Health & Human  
Services

#### **EDUCATION PARTNERS**

Berkeley Unified School District  
Caliber Beta Academy  
College of Marin  
Davidson Middle School  
Five Keys Schools and  
Programs  
Hayward Unified School  
District  
Healdsburg Unified School  
District  
Larkspur- Corte Madera School  
District  
Mare Island Technology  
Academy  
Marin County Office of  
Education  
Miller Creek Unified School  
District  
Mill Valley Unified School  
District  
Novato Unified School District  
Petaluma City Schools District  
Roseland School District  
Ross Valley Unified School  
District  
San Francisco Unified School  
District  
San Rafael City Schools  
Santa Rosa City Schools  
Sausalito/Marin City School  
District  
Shoreline School District  
Sonoma County Charter

Schools Sonoma County Office  
of Education  
Tamalpais Union High School  
District  
West Contra Costa Unified  
School District

#### **LEGACY GIVING SOCIETY**

*Side by Side's Legacy Society  
honors those individuals who  
have thoughtfully included our  
agency in their estate plans.  
By designating a legacy gift to  
Side by Side, the services and  
programs that they support will  
continue to touch the lives of our  
clients for years to come.*  
Anonymous (3)  
Kathryn L. Black & Todd Sparks  
Virginia Bertelsen  
Sue Clark  
Diana & Jeffrey Hill  
Elizabeth Johnson  
William Jones  
Russ & Kathy Ketron  
James Dennis Liddell  
Carole & Bruce MacPhail  
Nora J. McCallie  
Mr. & Mrs. Richard K. Robbins  
John B. Robinson  
Robert & Shirley Sanderson  
Mary Tash  
Cathy Tucker  
Charles Walters

#### **GUILD MEMBERS**

*The Guilds of Side by Side  
formed the backbone of support  
for our agency for decades.  
From community fundraisers  
to the Grape Festival to  
birthday treats for the Irene M.  
Hunt School, the Guilds have  
historically been integral to our  
organization. We are honored  
to recognize the Glenwood  
Guild below for their continued  
advocacy and commitment to  
the young people that we serve.*

#### Active Members

Gill Keirle, *President*  
Linda Christensen  
Alice Cogliandro  
Margaret Erickson  
Ruth Falkenberg  
Carole MacPhail  
Barbara Metzger  
Bea Newhall  
Joy Phoenix

Maggie Polan  
Terrie Reyes

#### Supporting Members

Joyce Anderson  
Kathy Barrass  
Sue Moore  
Anne Nelson  
Vivi-Anne Regstad  
Kay Schmitt  
Jan Smith

#### **IN-KIND DONORS**

101 Surf Sports  
AmÈlie CafÈ and Wine Bar  
Amici's East Coast Pizzeria  
Ashley Morgan Designs  
Asian Art Museum  
Balletto Vineyards  
Barrel House Tavern  
Bay Area Wine Company  
Berkeley Bowl West  
Bettinelli Vineyard  
Management  
Boards & Bottle  
Body Kinetics Gym  
Boisset Family Estate  
Brewsters Beer Garden  
Brix Restaurant  
Buena Vista Winery  
Capital Genealogy  
Charles M. Schulz Museum  
Cheers Hair Design  
Comforts  
Deanna Brock and Daniel  
Freeman  
Diana & Alex Lyman  
Dutton-Goldfield Winery  
Ed & Gerry's  
Elk Fence Distillery  
Fortunati Vineyards  
Frog Hollow Farm  
Glenwood Guild  
Golden Gate Bridge Highway &  
Transportation District  
Gravenstein Grill  
Hafner Family Vineyards  
Harrington Group  
Hiller Aviation Museum  
Hog Island Oyster Company,  
Inc.  
International Orange  
Jelly Belly  
Jennifer L. Gotti  
Joy and James Phoenix  
Judd's Hill Winery  
Kaiser Permanente Community  
Benefits - Marin-Sonoma  
Kelleher Family Vineyard  
Kendric Vineyard



**Mentee and Mentor Take Centerstage**

*Our organization aims to provide a deep and meaningful impact. This was seen first-hand at the Bank of Marin's Golf Tournament presentation on June 23, 2023. Former Board member and volunteer, Rich Walcoff, and his mentee, Kevin DeLeone spoke of their relationship and the program that brought them together—YouThrive.*

Kentfield Fire Protection District  
 Korbelt Champagne Cellars  
 Laser Center of Marin  
 Longway  
 Love Story Yoga  
 Maas Clinic  
 Marin Landscape Materials  
 Marin Magazine  
 Marin Raw  
 Marin Symphony  
 Marinistas  
 Martin Ray Vineyard & Winery  
 McEvoy Ranch  
 Metta Yoga  
 Michael Merrill Design Studio  
 Monterey Bay Equestrian  
 Mountain Play Association  
 Mr. and Mrs. James Phoenix  
 Mr. and Mrs. Phil Byer  
 Neurobehavioral Clinic & Counseling Center  
 North Bay Business Journal  
 Nugget Markets  
 Oakland Zoo  
 Pacific Pinball Museum  
 Peacock Gap Golf Club  
 Point Reyes Farmstead Cheese Company  
 Ram's Gate Winery  
 Red Car Wine Co  
 San Francisco Giants Community Fund  
 San Francisco Zoological Society  
 Scandia Family Center  
 Schumacher Photography

Shauna and Tom Keenan  
 Smuin Ballet  
 Swirl San Anselmo  
 Thai Smile  
 The Color Lounge  
 Treasury Wine Estates  
 Uncommon Grounds Coffee  
 Vertly  
 Wendy & John Buscaglia  
 Wine Country Cyclery  
 X'CORE Studio

**HOLIDAY GIVING COMMUNITY PARTNERS**

*The following generous community partners help make sure that every Side by Side client has a gift for the holidays.*  
 Book Passage  
 Kids Bike Lane  
 Marin Country Mart  
 Mill Valley Middle School  
 Secret Santa of Sonoma County/ Center for Volunteer and Nonprofit Leadership  
 Temple Beth Shalom (San Leandro)

**VOLUNTEERS**

*Side by Side gratefully thanks the volunteers and organizations listed below who have spent countless hours helping with our 2022-23 events, office administration, and program support.*  
 Kevin Abaya

Sheila Aceves  
 Paola Arandia  
 Alan Barbosa  
 Emma Barbosa-Boehm  
 Beatriz Behrens  
 Karen Bischoff  
 Lito Briano  
 Michael Broughton  
 Jackson Burton  
 Sarah Burton  
 Brandi Campbell  
 Elizabeth Capp  
 Andrea Chester  
 Pat Collins  
 Bruno de Sousa  
 Margaret DeVore  
 Kelly Duenas  
 Elizabeth Estes  
 Maria Ferreira  
 George Freeman  
 Eostrix Garcia-Freedman  
 Kara Ghilotti  
 Parker Hansel  
 Val Hansel  
 Nicole Harrop  
 Andrea Henderson  
 Cynthia Hollins  
 Ashley Hurd  
 Negar Iravani  
 Karen Jackson  
 Bradley Jones  
 Seran Kim  
 Jeanette Lager  
 Donatella Levintow  
 Jeffrey Madlangbayan  
 Samantha McCandless  
 Mason McCandless

Marla McLaughlin  
 Jennifer Miller  
 Marybeth Moser  
 Madison Munson  
 Declan Murphy  
 Maggie Paula  
 Cheryl Payan  
 Nicholas Post  
 Julie Quater  
 Patty Rahmer  
 Katie Rice Jones  
 Tammy Romero  
 Betsy Ross  
 Misty Rudolph  
 Carole Shook  
 Evan Sjostrom  
 Ronin Wong  
 Sai Wong  
 Jaiden Woodworth  
 Cati Young  
 Jeremy Yu

In preparing this report, we made every effort to ensure that it is accurate and complete. If there is an error or omission, please accept our apologies and notify the development department at [development@sidebysideyouth.org](mailto:development@sidebysideyouth.org) so we can correct our records. This report lists all cash gifts received between July 1, 2022 and June 30, 2023. Cash gifts made after that date will be published in next year's report. In-kind gifts associated with an event held during the 2022-23 fiscal year are included in this report regardless of the date of receipt.

**WAYS TO GIVE** [SidebySideYouth.org/ways-to-give](https://SidebySideYouth.org/ways-to-give)



**Monthly Giving** Switch to sustained monthly giving via credit card to provide Side by Side with regular support we can count on.



**Vehicle Donations** Have an old car taking up space in your driveway or a need to free up your boat slip? Donate it to Side by Side!



**Legacy Giving** Leave a lasting legacy by designating a future gift through your estate plan.



**EScrip** Raise money for Side by Side each time you shop at United Markets, Woodlands Market, Oliver's or other local grocery stores!



**Company Match** Increase the value of your gift by taking advantage of your workplace's matching gift program.



**Give In Kind** Contributions of donated goods and services help stretch our program budgets that much further.



**Stock** Gifts of appreciated securities can be an easy way of making your charitable dollars go further.



**Online Donations** You can make a gift securely online at [SidebySideYouth.org](https://SidebySideYouth.org) anytime, day or night.



300 Sunny Hills Drive, Bldg. 5  
 San Anselmo, CA 94960  
 Tel: 415-457-3200

Return Service Requested

SidebySideYouth.org  
 f sidebysideyouth  
 @ sidebysideyouth  
 @sidebyside4kids  
 sidebysideyouth

NONPROFIT  
 RATE



## Join Us for an Event this Year!

### WINTER

#### MARIN VALENTINE'S BALL

The Marin Valentine's Ball is held in February at the Marin Civic Center in San Rafael. It is an elegant evening of cocktails, hors d'oeuvres, fine dining, and auctions, followed by dancing to the music of Wonder Bread 5. The Ball supports the critical work of North Bay Children's Center, the Godmothers of Catholic Charities St. Vincent's School for Boys, and Side by Side.

### SPRING

#### IRENE M. HUNT CAPITAL CAMPAIGN REVEAL

Donors are invited to tour the Capital Campaign remodel they generously supported

#### GLENWOOD GUILD'S ANNUAL BINGO DINNER

Since 1966, the Glenwood Guild has supported Side by Side's programs and services including the annual BINGO event for youth in Marin County. Eventgoers play BINGO games, win fabulous raffle prizes, and walk away with the knowledge that their support made a difference for at-risk youth served by Side by Side's Irene M. Hunt School.

### SUMMER

#### BANK OF MARIN GOLF TOURNAMENT

Founded in 1995 by former Side By Side Board president and co-founder of Bank of Marin, J. Patrick Hunt, Bank of Marin Golf Tournament will tee-up for its 30th year. Get your foursome together early to be included in this sell-out summertime event at the Medow Club.

#### QUEER LOVE YOUTH PRIDE EVENT

Started in 2013, The Queer Love Youth Pride (QLYP) Event is an Our Space-produced event that celebrates LGBTQIA+ interconnectedness and brilliance with performance, activities, food, and community. This entirely youth-centered event makes for a community safe space where young adults can have fun and enjoy themselves.

### FALL

#### REACH FOR THE STARS GALA

Each year, Reach for the Stars Gala shines brightly with community service and community stars raising funds to support Side by Side's Bay Area youth mental health services. The gala includes a cocktail party, dinner, music, and always a special guest.

Learn more at [SidebySideYouth.org/events](https://SidebySideYouth.org/events)