



WITH **YOUTH**,
THROUGH ADVERSITY

ANNUAL REPORT 2022-2023 At a Glance

Together, We Can!



**Time Spent
with SBS Clients**

13,031 hours
of clinical service

124,678 hours
of therapeutic
classroom time

4,133 hours
of school-based
peer support
groups & classroom
sessions

2578

**Youth and Family
Served**



Board of Directors

Deanna Brock, *President*
Howard Schomer, *Vice President*
Tim Myers, *Treasurer*
Ryan Stone, *Secretary*
Danielle Adams
Melissa Blach
Jennifer L. Gotti
Bernadette Miller
Ina Miller
Joy Phoenix
Vamsey Palagummi
Darwin Pangilinan
Dale Satake

Agency & Program Leadership

Christine Isana Garcia,
Chief Executive Officer
Jamila McCallum, *Chief Program Officer*
Alan Hencky, *Chief Finance Officer*
Karen Bischoff, *Director of Property and Risk Management*
Sheila Aceves, *Director of Development*
Tiffany Vigil, *Director of Human Resources*
Jolene Yee, *Director, Irene M. Hunt School*
Matthew Holt, *Regional Director, East Bay*
Denisse Mendoza, *Regional Director, North Bay*
Beatriz Behrens, *Program Manager, Community Counseling North Bay*
Jasmine Cervantes, *Program Manager, Our Space*
Ahnjolique Haskins, *Program Director, Real Alternatives*
Vernon Pope-Banks, *Program Manager, YouThrive*
Laura Taylor, *Program Director, TAY Space*

Editorial Team

Katie Rice Jones, *Editor-in-Chief*
Sheila Aceves, Jasmine Cervantes, Marla McLaughlin, Denisse Mendoza, Katie Rice Jones, and Julie Quater, *Writers*
Katie Ravas for Drew Altizer, Paige Green, Andrew Hida, and Katie Rice Jones, *Photographers*
And Them, *Designer*

On the Cover: Staff at All-Hands 2023 meeting in team-building exercise at the Side by Side campus in San Anselmo. (Left to right: front row, Ken Taylor and Alliyah Taylor; back row, Maggie Paula, Tiffany Vigil, and Erica Antonio) Cover Photo: Katie Rice Jones

LETTER FROM CHRISTINE



Community, home, and the ability to dream

The support for Side by Side from donors, funders, volunteers, and friends like you has helped our youth and families create community, find a place to call home, and renew dreams deferred or lost. But the need continues to be great and **it's going to take each and every one of us to enhance the support for marginalized youth and families.**

Still, it's been a successful year and I want to highlight a few things from this year's Annual Report that we are proud of.

1. Our clinicians across regions provide first-line, best-practices trauma treatment to clients who need it. We are one of the few non-profit agencies that can offer Eye Movement Desensitization Reprocessing (EMDR) and Trauma-Focused CBT (TF-CBT) to our clients.
2. We had an incredibly successful Capital Campaign that increased student capacity to 72 students at the Irene M. Hunt School. However, even with more students attending the school, we have additional youth awaiting admission when more space is available.
3. We celebrated ten years of holding our annual Queer Love Youth Pride event where LGBTQIA+ youth and allies can feel pride and celebrate the rainbow of diversities in their identities.
4. Santa Rosa School District (SRSD) officially recognized the agency for supporting district students during school violence and community disruption threats.
5. We launched a partnership with Pegasus in Petaluma where North Bay clients build self-confidence, compassion, and knowledge by working with horses.
6. Last but certainly not least, we received a prestigious Excellence in Innovation Award from the Center for Volunteer and Non-profit Leadership for our *Raíces Unidas* initiative, serving Latinx immigrant students and their families.

We are proud of the work we do. However, our work faces ever more significant challenges due to a tidal wave of change at the county and state levels that impacts how we run our programs. In short, due to changes in how governmental contracts pay for our services, we are receiving less support, and yet continuing to serve more youth and families. Our needs and those of our clients are severe and significant.

Of course, your donations are always welcome, but there are also other ways you can support our mission. Perhaps you might consider volunteering your time with us, joining our Board of Directors, becoming a Side by Side Ambassador or youth mentor, or using your voice to advocate to the county or state for increased funding to support our youths' academic, mental, and behavioral health services. There are many ways to walk side by side with us.

We are so grateful for your support that enables us to remain strong and provide the best possible services regardless of the challenges we face. Side by side with you, **we can do this.** We can move toward a world free from a youth mental health crisis, where all our youth feel held, lifted up, and can dare, once more, to dream!

All the Best in 2024,

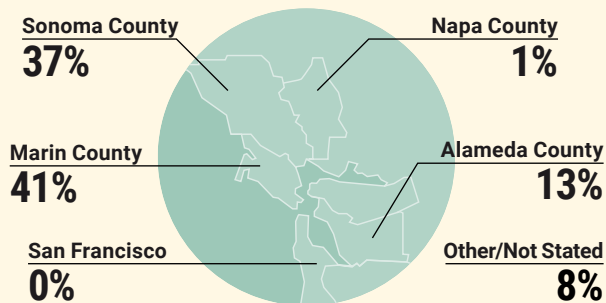
Christine Isana Garcia, Psy.D.
Chief Executive Officer

A PORTRAIT OF SIDE BY SIDE

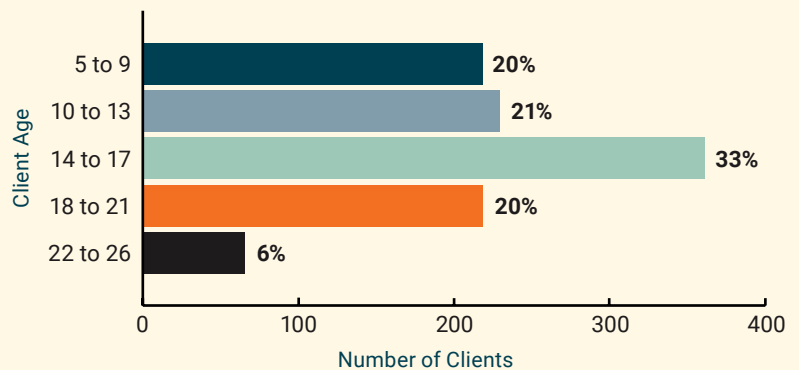
CLIENTS AND STAFF BY ETHNICITY



CLIENTS BY GEOGRAPHY



CLIENTS BY AGE



Clients Served
by Multiple SBS
Programs:

8.9%



Clients who are
Medi-Cal or
Free/Reduced
Lunch Eligible:

81%

DIRECT CARE STAFF

- 19** Clinicians & Case Managers
- 7** Youth Specialists & Advocates
- 14** Teachers & Behaviorists
- 18** Aides & Teaching Assistants

* Figures on this page do not include drop-in clients.

PROGRAM HIGHLIGHTS

BEHAVIORAL CHALLENGES, EMOTIONAL DIFFICULTIES, AND MENTAL HEALTH ISSUES OFTEN REVEAL THEMSELVES IN CHILDHOOD AND EARLY ADULthood. These challenges and issues can impact a young person's functioning at home, in school, and in the community. We view our work as a partnership between youth, parents, other caregivers, and treatment team. **Together, we can** help young people identify and understand their feelings, learn effective coping skills, thrive in school, and/or begin to heal from life's challenges.

IRENE M. HUNT SCHOOL Special Education (Marin County)

180 students served this year

The Irene M. Hunt School in San Anselmo is a non-public day school serving K through 12 students with social, emotional, and behavioral challenges that cannot be supported in the public school system. The overarching goal of the Hunt School is to return students to their neighborhood mainstream schools equipped with the skills to thrive socially and academically. Group and Family Therapy services further support the students and families and help promote earlier and more successful graduations. The school features small class sizes (3:1 student-to-staff ratio) separated for elementary, middle school, and high school and offers a therapeutic environment where students develop the capability to regulate their behavior, maintain focus and resilience, and form healthy, trusting relationships. The academic curriculum is individualized and supplemented with a wide range of enrichment activities and a school-wide positive behavior program. In addition, students receive personalized mental health treatment and other specialized services according to their Individualized Education Program plans. Behaviorists on the Hunt staff provide evidence-based behavior measurements, which result in data-enriched feedback about student progress.



"In a busy world that often can't or doesn't slow down to ensure that all humans thrive, we take comfort in the fact that Side by Side fills a massive gap for children and their families. Their mission, well-steeped in empathy and devotion, is unparalleled. Side by Side is an obvious granting choice for us."

- Dawn Shalhoup,
President, Marin Charitable

Hunt School Graduation

There are many types of graduations at Hunt School. Some are ceremonial, while others are the everyday sorts intimately known by staff and student. We look to support every student's potential by walking side by side with them to their next step.

YOUTHRIVE

K-12 Early Intervention & Prevention (Marin and Sonoma Counties)

968 young people and family members served

YouThrive's early intervention program serves students in grades K through 12. The program aims to prevent social-emotional challenges, truancy, academic failure, drug and alcohol abuse, and the escalation of criminal behavior, gang involvement, and violence while helping young people increase their commitment to their education, personal development, and community. The program offers 10-week group sessions during the fall and spring semesters and is currently embedded in elementary, middle, and high schools in Marin and Sonoma Counties. The groups address anger management, life skills, gang prevention, and restorative justice, as well as higher education. Individual counseling and mentoring is paired with regular monitoring of grades, school attendance, and disciplinary actions. When school behavior, grades and attendance improve, students earn extended trips (beach, theme park, or ballgame) and multi-day excursions (like rafting and wilderness camping). The benchmarks for success include reduced anxiety, depression or other mental health challenges, improved grades, school attendance and behavior, as well as improved relationships with peers and adults in school and at home.



Vernon Pope-Banks and
Dr. Christine Garcia.

"The program has helped me be better in school and I liked going on the summer trips and meeting new people. I am ready for YouThrive to start again this semester."

- Alan G,
YouThrive client

Side by Side Receives Special Congressional Recognition

Side by Side was presented with Special Congressional Recognition through the Heart of Sonoma Awards' Excellence in Innovation on June 15, 2023. It was presented in recognition of the agency's outstanding dedication to developing innovative and effective strategies to address critical issues affecting youth in the Bay Area. Side by Side's initiative, Raíces Unidas, serves Latinx immigrant youth and their families to help them overcome the significant challenges they face acclimating to school and their new community.

TAY SPACE

Acute Emotional and Mental Health Services (Marin County)

110 young people and family members served this year

TAY Space is a community center in downtown San Rafael for youth ages 16 to 25 who struggle with acute mental and/or emotional disorders including bipolar, schizophrenia, anxiety, and depression. A multi-disciplinary team works with up to 28 youth at any given time to provide individualized treatment plans and case management; links to resources for housing, education, and employment services; and coordinated individual therapy and psychiatric services. TAY Space manages an apartment for qualifying clients in need of transitional housing. TAY Space also functions as a center for any youth in Marin in need of a safe place and a community of other transitional-age youth. On a drop-in basis, TAY Space offers job coaching, substance abuse recovery services, workshops on stress reduction and mindfulness, money management, and independent living skills. Help accessing resources related to education, housing, and employment is available as well. The drop-in center also provides connections to critical social opportunities such as in-center games, potlucks, and birthday parties plus outside movies and field trips. Twice a week the center also serves as a food distribution point for hungry youth and stocks an emergency closet with toiletries, diapers, sanitary supplies, and basic clothing. The goal of TAY Space is to help transitional age youth gain the foothold they need to thrive beyond their diagnoses and histories.



"Las reuniones con Carla son verdaderamente un alivio ya que se cuenta con total confidencialidad y uno puede expresarse de una manera muy amplia. Cabe mencionar tambien que las actividades que TAY realiza son divertidas; compartir de vez en cuando con ellos es muy relajante. Un equipo muy respetuoso y dulce, el cual siempre busca ser de gran ayuda."

**- Dennis,
TAY Space client**

(Translation)

"My meetings with Carla provide me with great relief given that they are confidential and I can express myself freely. It is also worth mentioning that TAY hosts really fun activities, and hanging out with them is very relaxing. They are a very respectful and sweet team of people, always looking for ways to help."

Potlucks, Parties, and People

TAY Space celebrates the lives of youth every day and in every way. Providing a safe space to be oneself and to meet others doing the same, TAY Space helps facilitate authentic communities for the young people we serve.

COMMUNITY COUNSELING

(Alameda, Marin, Napa, and Sonoma Counties)

700 young people and family members served this year

Side by Side's Community Counseling services are individualized and offered throughout Alameda, Marin, Napa, and Sonoma Counties for youth between the ages of 5 and 26. Informed by a holistic understanding of the young person's history and strengths, this program supports the development of coping skills and strategies to help the young person function more effectively, attain stability, and develop a sense of personal agency. A spectrum of community-based services is offered to respond to the specific needs of the young person and their family. This includes a range of, "school-based," and clinic-based services to K through 12 students in Alameda, Marin, Napa, and Sonoma public schools that include individual and family counseling, therapeutic groups, medication evaluation/support (at our Santa Rosa office), and IEP counseling support. Outside of school, Side by Side also offers individual, family, and group counseling, evidence-backed therapies to treat trauma, such as EMDR and TF-CBT, as well as medication evaluation/support to youth and their family members.



*"It's where we have laid down
our heaviest burdens, greatest fears,
and most profound grief."*

– Mother, Sibling
CCNB Clients

*"We just started the program this week!
At this point I did not know what to do. TBS is like a
lifeline for me and my family. Having a daughter with
challenging behavior is overwhelming sometimes.
But thanks to the support, I am hoping to gain the
tools and confidence to navigate these challenges
effectively. I'm hoping to be a better parent
and hope our family life improves."*

– Lekisha,
mother of a 12-year-old CCNB client

*"I really like working with my behavioral
coach because he helps me learn new skills
and different ways I can use them in my everyday life.
It's like having a toolkit for my
mind, and it's made a world of difference in
how I handle things."*

– Jose,
14-year-old IHBS client from Point Reyes



OUR SPACE

LGBTQIA+ Support (Alameda and Marin Counties)

260 young people and family clients served this year

Our Space provides a vibrant safe space located in Hayward where LGBTQIA+ youth ages 13 through 24 can express their authentic selves and feel seen, accepted, and celebrated. Our Space also provides specialized support services for adult caregivers and families, as well as training for staff from schools, clinics, and other service providers working with LGBTQIA+ youth. The workshops for professionals deepen their understanding of LGBTQIA+ youth challenges and increase their effectiveness in addressing those issues. As the only youth LGBTQIA+ provider in Southern Alameda County and serving over 260 queer and trans youth and families each year, Our Space receives referrals for disconnected LGBTQIA+ youth in the foster system who are at high risk of further isolation, or are unhoused due to their sexual orientation, gender identity, or gender expression. Approximately 75% of Our Space members are youth of color. The program also offers LGBTQIA+ peer support groups in schools, community-based mental health and one-on-one case management, intergenerational community-building activities, paid youth leadership opportunities, as well as a community center with drop-in hours, a gender-affirming clothing closet, life-skills workshops, and monthly community days.

Our Space additionally partnered with Side by Side's YouThrive life-skills program to provide weekly virtual support groups for LGBTQIA+ students at College of Marin. Through the groups, College of Marin students can make new friends, learn something new, and connect with other queer, trans, nonbinary, and intersex folks on campus. Skilled facilitators also lead discussions about college life, healthy relationships, chosen family, and building community.



"Since 2020, Kaiser Permanente has been a proud supporter of Side By Side as they work to support and outreach to LGBTQIA+ and Latinx youth in Southern Alameda County. With a mission to improve health in our communities, we are humbled to partner with Side By Side as they work to mitigate adverse childhood events (ACEs), trauma, and isolation among youth and help them build resilience and thrive."

- Lloyd Nadal, MA,
Community Health Manager
Oakland/Alameda County, Kaiser Permanente

A Closet Full of Possibilities

What we wear helps us express our authentic ourselves. That's why the Our Space Closet offers a free shopping experience for our clients.

REAL ALTERNATIVES

Supportive Transitional Housing for Foster and Probation Youth (Alameda County)

37 young people and family members served this year

Located in Hayward, Real Alternatives offers a continuum of transitional housing opportunities throughout Alameda County for current and former foster youth and/or those on probation ages 18 through 24. Beds are available in a range of living accommodations including one to three-bedroom apartments. For all participants, the program provides a safe environment for youth to take responsibility for their lives in as many areas as possible and develop goals for the future, all the while having a safety net. Supported by our staff, youth learn to budget and pay bills, shop for groceries and cook, live with a roommate, pursue an education, and find and maintain employment. All Real Alternatives clients have access to mental health services and are also supported in building and/or repairing relationships, learning new coping skills, and managing any mental health symptoms. Crisis intervention and emergency support are available 24/7. In a five-year longitudinal study of Real Alternatives, Side by Side found that graduates had high levels (98%) of stable housing and similarly high levels (92%) of high school graduation rates. For more information on the study and its results, visit www.SidebySideYouth.org/programs.



"Side by Side has been supportive throughout my time with the program. The Real Alternatives team gives support, while helping us live independent lives."

– Taylor,
Real Alternatives client

The Making of Building Home Filmed at Real Alternatives and TAY Space

During the making of our recent client video—Building Home—we got to know two of our clients better—Maya from Real Alternatives and Sky from TAY Space. A crew of three—director, camera person, and producer had the pleasure of visiting the program locations in Hayward and San Rafael and learning more about Maya's and Sky's stories.

Side by Side walks with young people impacted by adversity on their unique journeys to heal from trauma, restore resilience, and embrace their potential.

To watch Building Home, visit SidebySideYouth.org/videos

MUTUAL APPRECIATION – WORKING TOGETHER WITH ANIMALS

Two Side by Side programs work with animals to build confidence, heal, spread love, and obtain self-knowledge.

COMMUNITY COUNSELING NORTHBAY X PEGASUS



Pegasus Riding School in Petaluma is a community-based organization (CBO) that believes in the healing magic of horses. They offer private lessons to the public and the same services, free of charge, to at-risk youth in our community. Side by Side offers referrals to Pegasus to connect with the local community.

Horses make good teachers because they show compassion to others through their body language. The Pegasus' horses are prized for their calm, strong, and steady demeanor. Side by Side sees many therapeutic benefits of horseback riding for our clients:

- Engenders empowerment
- Builds self-esteem
- Teaches respect and empathy
- Improves balance and coordination
- Connects us to the natural world
- Fosters deeper compassion

Our youth enjoy being outdoors and forming a relationship with Pegasus' horses and perhaps, the horses appreciate it too.

To learn more visit - PegasusRidingSchool.org

IRENE M. HUNT SCHOOL X RANCHO COMPASIÓN



Irene M. Hunt School Classroom 3 (the classroom serving students in grades 3 through 5) has partnered with Rancho Compasión in nearby Nicasio to create an educationally enriching series of field trips and classroom activities. Every month, the students look forward to their visit after spending time in the classroom learning about the domesticated animals and the mission of the Rancho Compasión sanctuary.

Rancho Compasión, founded in 2015, in the beautiful hills of West Marin, provides a "forever home" to rescued farm animals. The non-profit sanctuary offers a safe haven for over 80 animals of 10 different species.

Providing the Hunt School students with access to field trips gives them a much-needed sense of community connection, empowerment while fostering greater confidence in themselves and greater compassion for all living things. Something everyone and every creature can appreciate.

To learn more visit - RanchoCompasion.org

THE CAPITAL CAMPAIGN CULMINATION



IN SEPTEMBER 2023, SIDE BY SIDE COMPLETED MOST OF THE LONG-AWAITED IRENE M. HUNT SCHOOL RENOVATION AND EXPANSION, AND STUDENTS AND STAFF MOVED INTO THE NEW FACILITY.

Providing adequate space that supports a rigorous and therapeutic education for all our students and reducing our waiting list by increasing enrollment are the most important measurable outcomes for this project. Leveling the playing field for Hunt students academically is important to assure they can seamlessly transition to mainstream schools, and explore possible careers in all fields including science and technology.

THE CAPITAL CAMPAIGN **GOALS** REALIZED



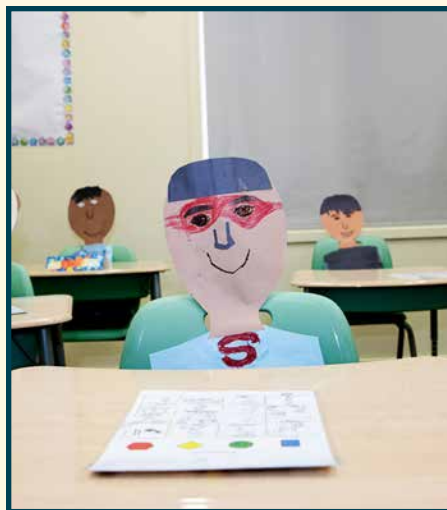
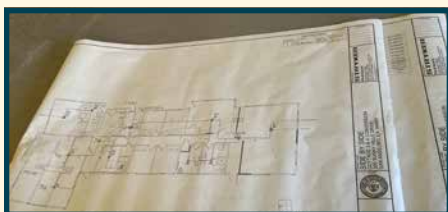
GOAL 1 Double the size of the high school classrooms from 25 feet per student to the recommended minimum of 50 feet. As Hunt School students frequently need to move to help themselves self-regulate, adequate space is imperative, particularly for high school students.



GOAL 2 Create a dedicated Art Room, as well as a STEM Lab on par with other Bay Area schools. Having a STEM experience comparable to other Bay Area students is crucial for Hunt students. A dedicated Art Room allows students to explore self-expression and artistic communication at a deeper and more impactful level. Both add an educational component that fosters their social and emotional development.



GOAL 3 Double the number of calming spaces in the high school building to provide a critical therapeutic tool. Our new Serenity Space provides a safe space for dysregulated students to learn how to calm themselves, and practice resilience, and self-control. Having adequate calming spaces more effectively reflects the range of developmental levels.



GOAL 4 Accommodate an additional eight middle and high school students. This expansion enables the school to increase enrollment from 64 to 72 students. The Hunt School has a waiting list in many grades. An expanded classroom equals an expanded group of youth receiving important services.



GOAL 5 Refurbish the gymnasium. State of the art Pulastic flooring was installed, as was a new water bottle fountain, and other needed equipment was purchased. By improving its use as a multipurpose room, it has become a safe, flexible space for physical education and schoolwide activities that both meet our students' unique and varied needs, and serve to provide community building and out-of-classroom learning opportunities. Students at the Oak Hill School (for students on the autism spectrum), a tenant of Side by Side, will additionally benefit from these upgrades.

GOAL 6 Create dedicated spaces for meetings and therapy sessions. New configurations created an occupational and speech therapy room, individual therapy offices, a conference room with video capabilities for parent/school district conferences, staff meeting/training space, and an easy access point for parents and school district partners.

THANK YOU TO OUR GENEROUS DONORS

The Hunt School has evolved significantly over the years. The new campus supports Hunt's exceptional staff's ability to make a difference in their students' lives. All of us at Side by Side and the Hunt School are deeply grateful to all our capital campaign partners who made this important project possible.

ORGANIZATIONS

Arntz Builders
Arntz Family Foundation
Bank of Marin
BioMarin Pharmaceutical, Inc.
Bothin Foundation
Chevron Matching Gift Program
County of Marin - Marin Community Partners
Fenwick Foundation
Hobson/Lucas Family Foundation
Intuitive Foundation
Jay Pritzker Foundation
Marin Community Foundation
Red Hill Shopping Center
The Stocker Foundation
Ticknor Foundation

William G. Irwin Charity Foundation
Zierk Family Foundation

INDIVIDUALS

Anonymous
Danielle Adams
Sharlyne Balano
Mr. and Mrs. Seth Barad
Paula and John Beritzhoff
Karen Bischoff and Ed Boisson
Deanna Brock and Daniel Freeman
Wendy & John Buscaglia
Mr. and Mrs. Phil Byer
Lydia and Tony Cameron
Barbara Carbone and Gregg Lyman
Bruce Carlson
Mr. David Clayton and Ms. Gayle DeKellis
Mr. and Mrs. Eric Clothier
Cynthia Cornell
Mr. David Egan
Jennifer Gotti
Charles Grieve
Marti and Tony Grimminck
W. Robert Griswold Jr. & Alexandra Griswold
Ms. Nannette Griswold
Mr. and Mrs. J. Patrick Hunt

Dr. Catherine Kennedy and Mr. Daniel Grossman
Chuck Grieve and Deanne LaRue
Ms. Elisabeth Levy
Carleton MacDonald
Connie Matsui
Glenn and Dayna Meyers
Tim and Oksana Myers
Thomas and Susan Monahan
Alyssa O'Hare
Joy and James Phoenix
Bruce Raabe and Sara Wardell-Smith
Mr. and Mrs. David Rabb
Ms. Dale Satake
Kimberly Rochat and Howard Schomer
Mr. and Mrs. Mike Shepard
Mr. and Mrs. John Shook
Mr. and Mrs. David Spielberg
Ryan Stone
Mr. and Mrs. Raymond Syufy
Darcy and Don Tarantino
Mike and Sondra Van Metre
Mr. and Mrs. Rich Walcoff
Jeffrey and Deborah Weber
Katherine Woolard
Jolene and Jeff Yee

TOGETHER WITH YOUTH FOR 128 YEARS



1895

Founding as San Francisco Presbyterian Orphanage and Farm



1898

Captain Robert donated funds to acquire 20 acres



1899

The first Grape Festival



1920

Captain Dollar donated the funds to acquire additional 42.6 acres



1930

Name changed to "Sunny Hills."



1965

Cottages and administrative buildings erected on San Anselmo campus



1967

Name change to "Sunny Hills Children Services."



1989

James R Sylla School opened on the Sunny Hills campus



1995

The Bank of Marin Golf Tournament established



2006

Final Grape Festival



2007

YouThrive merged with the Bay Area Youth Center in Alameda County, such as Real Alternatives



2016

Earned the Joint commission Gold Seal Approval



2018

Rebranded as Side by Side



2020

Launched virtual services launched across the agency to contend with the COVID-19



2022

Reaccredited by the Joint Commission



TODAY

Side by Side serves more than 2578 youth and their families with six programs

SIDE BY SIDE HAS A RICH HISTORY OF SERVING YOUTH FOR OVER 128 YEARS. DURING THIS TIME, IT HAS BECOME A VITAL AND DIVERSE AGENCY. WHILE PHYSICAL BUILDINGS CAME AND WENT OVER THE YEARS, AND THE FACE OF CLIENTS AND STAFF CHANGED, THE SPIRIT OF SIDE BY SIDE HAS NOT WAVERED. We have been there for our youth through every adversity they confront and through your support, remain committed to helping each youth find their potential. We are so immensely proud of our history and given this is our Annual Report, we thought it would be a fantastic opportunity to revisit (and share) our agency's timeline with you.

1895

The agency was founded as the San Francisco Presbyterian Orphanage and Farm when a local, young widow died, leaving behind three young children. The orphanage initially opened in a small, rented house in San Rafael, California.

1898

Captain Robert Dollar, a philanthropist and global shipping magnate, donated money to the orphanage to acquire 20 acres in the town of San Anselmo, California. A large building on the land was constructed (on the hill just above what is now Red Hill Shopping Center) and completed on July 8, 1900. Unfortunately, a fire burned

down the building in 1920 and the orphanage was soon after rebuilt.

1899

The first Grape Festival kicked off—a beloved annual fundraiser that would continue for 105 years—supported first by community members, and then the Guilds of Sunny Hills (in their heyday numbering 38 active guilds and 1,500 volunteers).

1920

Captain Dollar donated the funds for the purchase of an additional 42.6 acres of pastureland to the orphanage.

1930

San Francisco Presbyterian Orphanage and Farm formally

changed its name to "Sunny Hills."

1950

Bargain Box Thrift Shop was founded by the Junior Auxiliary Guild in support of Sunny Hills.

1955

The expansion of foster care and government aid after World War II changed the need for institutional care. In response, the Child Welfare League of America requested that Sunny Hills begin a program to provide highly-individualized care for troubled adolescents.

1965

Residential cottages for up to 40 adolescents, and the other administration buildings were

built on the San Anselmo campus.

1967

Sunny Hills legally changed its name to "Sunny Hills Children Services."

1989

Bargain Box moved to a permanent location on Irving Street in San Rafael. Also in that year, James R. Sylla School opened on the Sunny Hills campus to provide special education to adolescent residents.

1995

The Bank of Marin Golf Tournament established by J. Patrick Hunt, founder of Bank of Marin.

2006

105th and final Grape Festival is held in Larkspur Landing.

2007

After 100 years of serving Sonoma County, youth offices established in Santa Rosa. Services expanded to include YouThrive in 2008 and merged with the Bay Area Youth Center in Alameda County, expanding which included Real

Alternatives in 2010.

2016

Earned the Joint Commission Gold Seal Approval for behavioral healthcare accreditation.

2018

Rebranded as Side by Side to better capture the essence of the relationship with youth that we serve across a diverse array of programs.

2020

Virtual services launched across the agency to contend with the COVID-19 pandemic and innovate outreach strategies, including FIFA soccer tournaments and an art contest.

2022

Reaccredited by the Joint Commission.

TODAY

Side by Side serves more than 2578 youth and their families with six programs in Alameda, Marin, Napa, and Sonoma Counties.

TOGETHER, WE CAN!

THANKS TO YOUR INVESTMENT IN OUR PROGRAMS THIS YEAR, SIDE BY SIDE HAS MADE A SIGNIFICANT DIFFERENCE FOR MANY BAY AREA YOUTH AND THEIR FAMILIES. WE COULD NEVER FULLY EXPRESS HOW MUCH WE VALUE YOUR SUPPORT.

Our staff has seen the need in our community continue to grow. Referrals are accelerating. Demand for our school-based services is at an unparalleled level. Even as the immediacy of the pandemic recedes, youth continue to experience anxiety, depression, anger, and burnout. These mental health challenges are not new, but what has changed is the acuity of the challenges. The case management required to support these youth has grown significantly, with each client needing multiple resources. These days, our dedicated staff work to provide multiple services—assistance with housing and food, homework help, and navigating the school services system—beyond just addressing a youth's depression or anxiety.

*But because of your help in sustaining our programs,
Side by Side is meeting that need for youth.*

At TAY Space, Side by Side's community center for youth 16 through 25 who struggle with mental and/or emotional disorders, our client Sky is dealing with issues that cause them to feel unsafe and unstable. After being unhoused for much of their teen years, Sky found TAY Space in San Rafael. At TAY, Sky works with a clinician and other support staff who help them learn coping strategies. As Sky gains confidence in their ability to handle their emotions and the daily challenges that once seemed insurmountable, their clinician Carla continues to provide perspective and encouragement. Side by Side's work with Sky helps make their world a less overwhelming, more manageable place every day. Sky feels so much more empowered to move forward. These small steps we take alongside our clients become a journey of milestones and accomplishments. And those journeys could not happen without you.

*Your support of our work truly offers brighter futures for those
who often meet us in the dark moments of their lives.*

We hope you'll continue to support the critical services Side by Side offers. Your generosity will impact our community for years to come.

TO DONATE, visit SidebySideYouth.org/donate



To learn more about Sky's story, visit SidebySideYouth.org's Homepage and click on "play video" located on the web banner.

SIDE BY SIDE COMMUNITY-RAISERS

HERE IS A GLIMPSE OF THREE OF OUR MULTI-FACETED COMMUNITY-DRIVEN EVENTS IN 2023.

BANK OF MARIN GOLF TOURNAMENT

On **June 26, 2023**, Bank of Marin held its 29th annual golf tournament benefiting Side by Side. Over 140 golfers came out to test their skills on Meadow Club's course including the bank's and the tournament's founder, J. Patrick Hunt. Overall, the event raised \$61K for Side by Side's youth mental health services.



QUEER LOVE YOUTH PRIDE EVENT

Our Space celebrated their 10th anniversary of Queer Love Youth Pride (QLYP) on **July 22, 2023**, at the Reach Ashland Youth Center in Ashland. The event was produced by Side by Side Our Space Staff and Our Space clients. The QLYP Event celebrates LGBTQIA+ interconnectedness, performance, and brilliance. A former Our Space client emceed the six solo acts and one group performance. The acts included song, dance, spoken word, instrumental music, and a drag performance. In addition to the performers, community partners and local craft and food vendors were on hand to support this community event focused on Youth Pride.



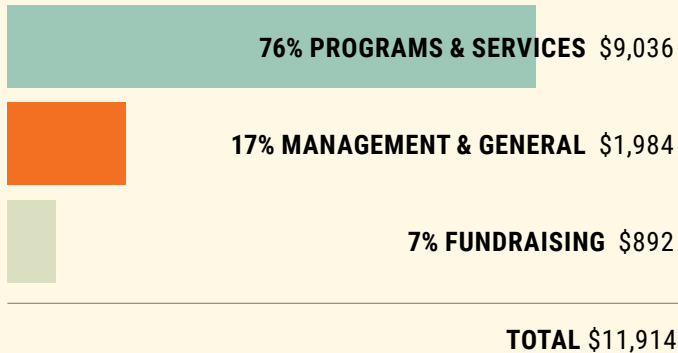
REACH FOR THE STARS GALA

Side by Side's Reach for the Stars Gala shone brightly with community service and community stars. The Reach for the Stars gala took place at the Mill Valley Community Center on **November 4, 2023**, and raised over \$145k for Bay Area youth mental health services. Produced by Side by Side, the Reach for the Stars gala hosted 175 attendees who traveled from far and wide to enjoy supper-club-style cocktails and dining, jazz music, and a post-dinner DJ set by D Sharp, the Golden State Warriors official DJ. Attendees heard from Side by Side's CEO, Dr. Christine Garcia, about the current youth mental health crisis and the agency's mission. California State Senator Mike McGuire was also on hand to support the event as the night's honorary emcee.

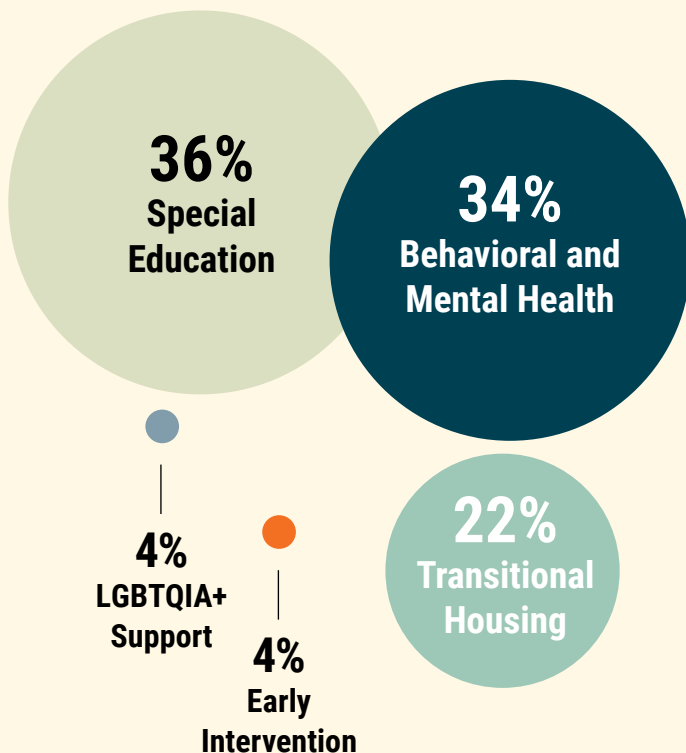


FINANCIALS

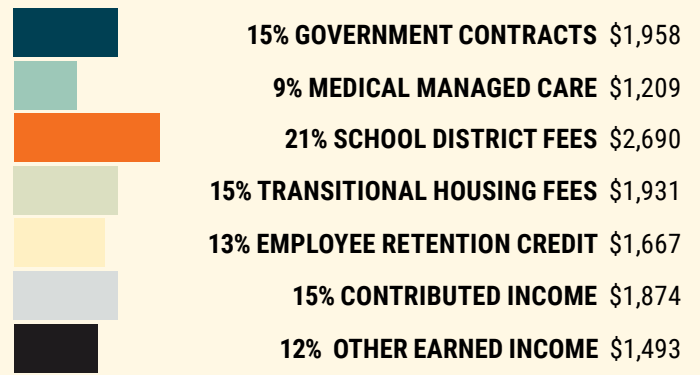
EXPENSES BY TYPE (% and 000's)



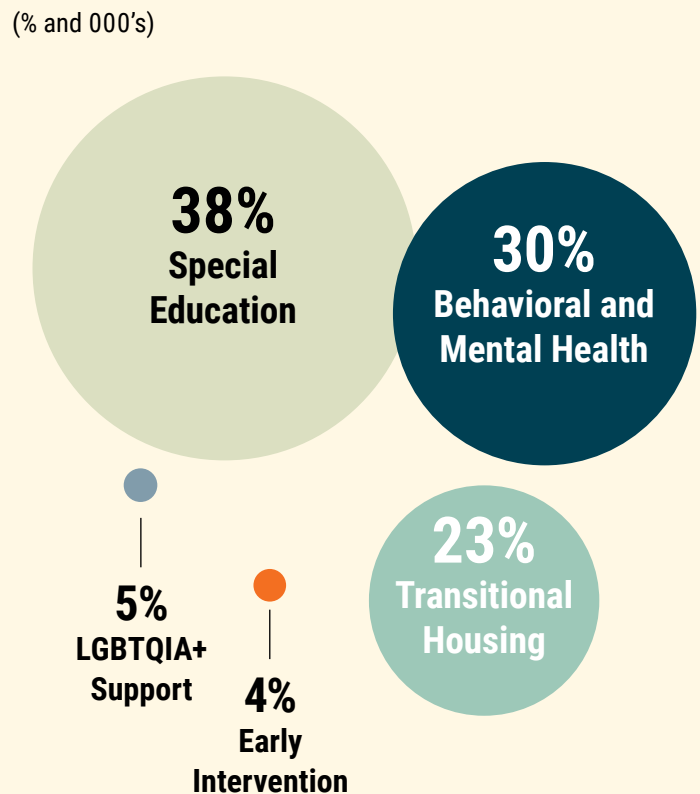
EXPENSES BY SERVICE AREA (% and 000's)



REVENUE BY TYPE (%)



REVENUE BY SERVICE AREA (% and 000's)



FINANCIAL POSITION

(000's)

Total Assets
\$23,333

Total Liabilities
\$17,524

Total Net Assets
\$5,808

* In FY23, SBS adopted Accounting Standards Update No. 2016-02 Leases (Topic 842) and elected not to restate the prior year for comparative purposes. The FY23 impact on the Statement of Financial Position was \$12,240,725 in assets and \$12,242,378 in Liabilities.



THANK YOU FOR JOINING SIDE BY SIDE ON OUR JOURNEY.

THE FOLLOWING GENEROUS SUPPORTERS GAVE SIDE BY SIDE CASH GIFTS BETWEEN JULY 1, 2022 AND JUNE 30, 2023. EACH AND EVERY GIFT, NO MATTER THE SIZE, ENABLES US TO WALK WITH THE BAY AREA'S YOUNG PEOPLE IMPACTED BY ADVERSITY ON THEIR UNIQUE PATHS AND PROVIDE THE SAFE SPACE MANY OF THEM HAVE MISSED IN THEIR LIVES. **THANK YOU!**

\$50,000 +

Bothin Foundation**
Community Foundation
Sonoma County*
Five Bridges Foundation**
Dr. Catherine Kennedy and Mr.
Daniel Grossman**
Marin Valentine's Ball*
Walter S. Johnson Foundation
William G. Irwin Charity
Foundation*

Ms. Virginia Harmon
Healthcare Foundation
Northern Sonoma County
Horizons Foundation*
Intuitive Foundation
Jonas Family Foundation*
Connie Matsui
Jacqueline and David
Spielberg**
Tipping Point Community*
West Davis & Bergard
Foundation*

Red Hill Shopping Center
Marsha Rosenblatt
Sandia National Laboratories
Sharks Foundation
Silicon Valley Community
Foundation
Charles Silverman*
Speedway Children's Charities
/ Sonoma Raceway**
The Stocker Foundation
Mr. and Mrs. Angus Wilson

David and Tonia Rubin
Safeway Foundation
Howard Schomer and Kimberly
Rochat
Schultz Foundation**
Shelley & Company
Jennifer and Mike Shepard**
Venable Foundation
Mike and Kari Zazzara
Anne Zepecki

\$25,000 - \$49,999

Bella Vista Foundation*
Fullerton Family Foundation**
J. Patrick Hunt and Frankie
Hunt**
LaureL Foundation
National Association of
Theater Owners of CA/NV
Dale Satake
Sutter Health Eden Medical
Center
Sutter Health North Bay
The Raymond & Ricki Syufy
Charitable Gift Fund**
Zierk Family Foundation**

\$5,000 - \$9,999
AHS Foundation**
Arntz Builders
Bakamis Design Group
Bank of Marin**
Seth and Amy Barad**
Barbara M. Burns Foundation
Deanna Brock and Daniel
Freeman
Byer Foundation
Jay and Shelley Cahan*
Center for Volunteer &
Nonprofit Leadership**
Cornell Charitable Fund
Julie and Chris Dolan
Filice Insurance Agency
FIS**

\$2,500 - \$4,999

Ron and Allison Abta
Autodesk Foundation
Employee Engagement Fund
Lois de Banzie
Bay Area Physicians for Human
Rights*
Belvedere Fund**
BioMarin Pharmaceutical, Inc.
Bon Air - Greenbrae*
Barbara Carbone & Gregg
Lyman**
Lyndsey and Jimmy Conrad
Mary Denton & Monte
Deignan**
Juan and Evelyn Gonzalez
Jennifer L. Gotti**
Nannette Griswold**
Heather Thompson, COMPASS
Realty
Heffernan Foundation*
Kathlyn McPherson Masneri &
Arno P. Masneri Fund**
KPMG*
Elena & Dan Little
Marin Sanitary Service**
Joe Murphy

\$1,000 - \$2,499

Active 20-30 Redwood Empire
#1029*
Sarah Anderson
Anonymous(2)
Sean Biddinger
Brown Advisory
Wendy & John Buscaglia
Hugh and Luanne Cadden*
Sue and Joe Carlomagno**
John Castro*
Leslie and Richard Cohen**
Dean Duchak
Edward Pollak Family Fund**
The Elliott-Blank Family Fund
Erickson Family Fund**
John and Candyce Francis
Joseph Genovese
Scott and Kara Ghilotti
The Grateful Dog Inc
Marti and Tony Grimminck
W. Robert Griswold Jr. &
Alexandra Griswold
Natalie & Louis Harrison
The Heck Foundation
Nicolle Henneuse**
Hubbell Daily Architecture +
Design

\$10,000 - \$24,999

Anonymous Fund of MCF
Bernard E. & Alba Witkin
Charitable Foundation*
Mr. Charlie Clifford and Mrs.
Holly Hopper*
The Eucalyptus Foundation
Fenwick Foundation**
Ferrari Owners Charitable
Foundation
George H. Sandy Foundation**

Ghilotti Construction
Company**
Yoko and Rick Kasai
KCM Investment Advisors*
Robyn and Warren Luhnig
Diana & Alex Lyman
Shannon and Taggart
Matthiesen
Emily Morris and Javier Soltero

Erica Jacobs
Jam4Joy
The Kawaja Family
Mr. and Mrs. Larry
Klaustermeier**
Michael Kruger
Carrie Lambert
Mr. and Mrs. James Lazor, Sr.**
David Lechuga
Marin Charitable**
Marin Roto-Rooter*
Deborah N. Matthies**
Bryan McDonald
Robert and Suzanne
McLennan**
McNabb Foundation
Ina Miller
Dannette Mitchell
Montecito Plaza Shopping
Center**
Tim and Oksana Myers*
Mr. Jon Nakamura
Novick Family Charitable
Fund**
Vince ODriscoll
Linda and Michael Perrella**
PG&E Community Investment
Program*
Pizzalina
Mr. and Mrs. David Rabb**
Lisa Rapoport and John
Freeman
Relevant Wealth Advisors, LLC*
Robert H. Greene Real Estate*
Robison Family Foundation**
Royal Grand Ducal Council
of Alameda/Contra Costa
Counties*
Mr. Chris Rudolph
Andrea Schultz
Ricardo Segura
Karen Seratti and Kevin Asbra
Hal and Carol Shirley

David Short
Cherie Sorokin
Craig Squires
Olga Stephan
Stephanie Lamarre, Golden
Gate Sotheby's International
Realty
Ryan Stone
Darcy and Don Tarantino
Dennis Thompson
Tri Counties Bank
Mr. Richard Ugarte
Robert Verhoeff*
Westamerica Bank**
Frank & Melissa Williams
Katherine Woolard
Zach Fund at East Bay
Community Foundation**

\$500 - \$999

Alten Construction**
Austin Andruss
Anonymous(3)**
Mr. and Mrs. John Bessolo III*
Karen Bischoff and Ed
Boisson**
Melissa Blach
Todd and Julie Boes
Jean and Stuart Brown**
Justin Burt*
Mr. and Mrs. Phil Byer
Lydia and Tony Cameron**
Joel Campos
Claudia Carlson and Jack
Brenneman**
Karla Rivera Cervantes and
Ernie Cervantes
Chevron Matching Gift
Program*
Amber Childress
Russ and Lynn Colombo*
Mr. Richard Fike and Ms. Sara
Thorpe**

Susan and Geoff Flint
Flynkins Fund of Horizons
Foundation
Dianne Fowler**
Nicole Friedland
Anne Golden
Christina Hale
Rebecca and Ray Hathorn*
Alan Hencky
Hennessy Advisors, INC
Mark and Dale Hillard**
Joe and Cara Hunt**
Tom and Diane Johnston**
Terry Kessler and Francine
Halberg
Gene Koziarz
Chris Kughn
Lynn Larsen
Laurie Anne Lassek
Laurel
Dr. George Little
Susan MacMillan
Carole and Bruce MacPhail**
Marin Lodge No. 200 I.O.O.F.**
Mara C. Meisner and Davy
Crockett**
Candace Neal-Ricker
Shari Nemerovski
Mr. and Mrs. Thomas Oblatz*
Vamsey Palagummi JD
Darwin Pangilinan
Stephane Paquet
PFLAG Oakland-East Bay
Mr. and Mrs. James Phoenix**
Margaret and Nicolas Pierattini
Purple Lady/Barbara J. Meislin
Fund**
Bruce Raabe and Sara Wardell-
Smith**
Perry Seto
Mercedes Shinohara-Taylor
Carole and John Shook**
Nicolette Sloan
Ben and Kristen Swann
Chris and Kathy Swindle
Peter Timmerman
Vivalon
John and Kathy Woldrich**
Mr. and Mrs. Darryl Woo**
Haruki Yee
Jolene and Jeff Yee

\$250 - \$499

Acuant Inc
Danielle Adams
Adolph & Jeanne Capurro
Revocable Trust**
Samantha Arreolla
Sidney F. Baker**

Byrd & Jim Baldwin*
Julie Ballard
Jessamy Barker
Mr. Morgan Beatty and Mrs.
Winnie Huff**
Jamie and Joe Behrendt*
Guy Benstead
Aviva Boedecker
David Cuneo
Elkin Family Fund*
Vendela Fehrm
Fiona Friedland
Christine Isana Garcia, PsyD
Jon Herzenberg
Diana and Jeffrey Hill**
Mr. Bill Hogan and Mrs.
Michele McLellan*
Ms. Linda Hothem**
Ashley and Riley Hurd
Sally and Mark Jaeger
Constance Jones
Shauna and Tom Keenan**
Christina and Eron Kosmowski
Elizabeth Kulavic**
Marilee Lau
Carleton MacDonald
Ms. Bonnie Manning**
Victoria Martin
Michael and Elizabeth Hatfield
Charitable Fund*
Peggy Moseley
Jennifer Murray
Mr. and Mrs. Frank Noonan*
Mr. John Owen**
Cathy Pereira
PG&E Corporation**
Ashley and Corey Preston
Robert Reedy
Pam and Mark Ross
Christine Scott**
Shelagh Smith Giving Fund
Jeremy Sher
Noah Snyder
Mr. and Mrs. Charles
Stedwell**
Tom and Rebecca Sylla**
Steven and Jacqueline
Tulsky**
United Markets**
United Way of North Central
New Mexico
Peggy Vaughan*
Mr. and Mrs. David Walker**
Stuart Wallace
Robert Weeks
The William and Carol Bryan
Charitable Fund
Donald Young and Susan
Young



Cookie Challenge, Anyone?

All-Hands 2023 meeting in a team-building exercise called the Cookie Challenge. Here are the rules:

1. Cookies must be placed in the middle of your forehead, not touching your eyebrows.
2. You can tilt your head and move your face, but you cannot touch the cookie with your hands.
3. The cookie must remain in contact with your face at all times. You're not allowed to attempt to flip it from your forehead and catch it in your mouth.





\$100 - \$249

Kevin Abaya
Sharon Hunsaker Adams
David Alcock
Todd Aldrich
Allan Rappaport Charitable
Foundation
Pat Allen
AmazonSmile Foundation
Mr. Robert Anderson and Ms.
Suzanne Louise*
Fredrik Andersson
Anonymous(3)
Chris Arnold
Dave Arntz
Mario Arteaga and Cindy
Arteaga
Joel Backman
Sanaz Banihashemi
Dr. and Mrs. Joseph Basso**
Howard and Marilyn Belove
Berardi Family
Boo Boero**
Sue and Pete Bowser**
Heather Brock
Lynn Brown
Ms. Joan Brown
Dorothy and Shepherd Burton**
Diana Caccamo*
Mr. Matt Cappiello*
Jasmine Cervantes
Andrea and Caben Chester
Linda and James Christensen
Ciena
Alice Cogliandro**
Angela Barbetta Collins

Dawn Connolly
Nora Cooper
Tony and Annette Davary
Terry and Paul Descalso**
Judy Digiorgio
Dave and Cheryl Egan
Janet Heley Ekberg
Meredith Etherington
Kurt Falkenberg
Ruth Falkenberg**
Erdmuth Folker**
Karen Garbarino*
Raul Garcia
Ms. Nina Gardner
Sharon Gillars
Robert Gollan*
Mr. Edward Haas and Ms.
Patricia Oji**
Ahnjolie Harris
Josefine Hederoth
John Heliotis
Ms. Sherri Hendrickson**
Raime Heyneker
Tracy and Bill Hogan*
Matthew Holtz & Jacob Loyar**
Impact 100 East Bay
Karen Jackson
Aaron Jones
Alison Jones
William W. Jones**
Mr. and Mrs. Stuart Keirle**
Gerry Kelly
Rozella and John Kennedy
Brian Kim
Tommy Lamanna and Shannon
Kruger

Karen and Scott Lamson
Jan Laret
Daniel Levintow
Scott and Erica Lindstrom-
Dake
Sarah Liu
William and Paula Jean
Loeffler*
Sonya Lopez
Shaun Madden
Sonya Manning
Marin Home and Garden Club
Simon McBride & Jasmine
Gavam
Mr. and Mrs. John McCall**
Jamila McCallum
Denisse Mendoza
The Mettner Family Trust**
Barbara Metzger**
Bernadette Miller
Steve Miller
Mr. and Mrs. Minoia*
Glenn and Laura Miwa**
Angelica Montalvan
Cassandra Monteith
Amy & Ryan Morgan
Edward Morgan
Drew Morrell
Audrey and Diego Mosquera
Cynthia Murray**
Anne Nelson**
Linda Noel
Yolita Nowak
Jessica O'dea-Bumanglag
Vince O'Driscoll
Mr. and Mrs. Dennis O'Neill*
Ellen and Peter Obstler
Ji Park
Susan Park
Mr. and Mrs. Richard Parker*
Janet and Robert Pawlan**
Kasia Pawlowska
Pet Emergency & Specialty
Center
Mr. and Mrs. Dave Peterson**
Kaycee Pomeroy
Elizabeth Purvis
Mr. and Mrs. William Rafferty**
Dickson Ranch*
Patricia and Charles Raven*
John Ricco
Mr. Frank Ridley*
Ric Rascoe
Trista Samole
Madeline Schaidler
Tim Schulte
Oded Schwartz and Ruth
Rosenthal
David Shapiro
Carole and Douglas Sheft**

Andrew Smith
Tiffany Song
Marcia and David Sperling
Walt and Anna Spevak
Anindita Spielberg
The Stephen & Julie Kimball
Charitable Fund*
Julie and Albert Stoll
Craig Sundstrom
Jamie Sutherland
Jerry Suyderhoud
Jack Terrell
Judy Torrison**
Mimi Towle
Trusource Consulting Group
Mr. and Mrs. Thomas Tucker**
Christina Van Winkle
Benjamin Vanderford
Tiffany Vigil
Jason Warner
Michael Webb & Patty Mullen**
Wells Fargo**
Dr. Thomas J. White
Julianne Wilhelm
Mr. and Mrs. Mordechai
Winter*
Leigh and Ashton Wolfson
Mr. and Mrs. Jim Wood
Joyce Wu

\$50 - \$99

Abbott Laboratories Fund
Robert Anderson
Anonymous(2)*
Vivian Bauer*
Cindy and Bernie Benson**
Mary Bramblett
Rachel Buck
Delaney Burk
Leslie Carroll
Anna Cecchini
LeeAnn Chernack
Ms. Diane Connor**
Colonel Cope**
The Della Valle Family Fund
Elaine Dipalma*
Ben Edoukou
Jorge J. Enriquez**
Nheeda Enriquez
P.C. Ernsberger
Stephen Fegen
Kari Foulke
Stanley Gibbs
The Gibson Family**
Gilead Sciences, INC.
Paul Glover
J. Golden
Ms. Karen Halvorsen**
Jessica Hamilton
Ms. Inge Hendromartono*

The Higgins Family
Hipline Dance Studio
The Honorable Paul Kelley
Mr. and Mrs. Donald
Humphreys*
Patricia Klein
Cari L. Pace Koch and Bob
Koch**

Janice Low
Zach McReynolds
Mark Miller
Kathleen Mullen*
Douglas Murray*
Norma Neal
Ms. Ralene Neve**
Bea Newhall**
Cheryl Nice
Greta Olesen
Barbara and Richard Patchin
Margaret Paula*
Peter and Nina Perl
Mr. and Mrs. James Phalon*
Maggie Polan**
Kevin Radich
Theresa Reyes**
Katie and Ronnie Rones
Janet Smith**
Barry Spitz
Ruth & Larry Stotter**
Cheryl Thevenet
The Thomas and Susan Moore
Family Fund of the Ayco
Charitable Foundation**
Tim Van Voris
Ms. Beth Voorhees**
Mr. and Mrs. Robert Willard**
Judith Wilson**

GIFTS IN HONOR OF

LH Caalim
Charlie Carr
Mary Denton
Richard Harmon
Irene M. Hunt School
Marissa Johnson
Joy Phoenix
Lillian Pounds
Marsha Rosenblatt
Hayden Rubin
Katrina Steffek
Ricki Syufy
Edi Wipf

GIFTS IN MEMORY OF

Leslie Barker
Zona Bauer
Helen Dennis
Mary Eschen
Devora Harrison
Aaron Jones

Carter O. Belove
Reemajah Pollard
Antonia Ruffermann
Ginger Sylla Egan
Dolly Torrison
Robert Vaughan
Tamika Williams-Clark

GOVERNMENT CONTRACTS & GRANTS

Alameda County Department of
Child & Family Services/Youth
Acceptance Collaborative
Alameda County Behavioral
Health & Recovery Services
Beacon Health Services
County of Marin Behavioral
Health & Recovery Services
County of Sonoma Family,
Youth and Children's Services
Kaiser Permanente - Northern
California
Napa County Health & Human
Services

EDUCATION PARTNERS

Berkeley Unified School District
Caliber Beta Academy
College of Marin
Davidson Middle School
Five Keys Schools and
Programs
Hayward Unified School
District
Healdsburg Unified School
District
Larkspur- Corte Madera School
District
Mare Island Technology
Academy
Marin County Office of
Education
Miller Creek Unified School
District
Mill Valley Unified School
District
Novato Unified School District
Petaluma City Schools District
Roseland School District
Ross Valley Unified School
District
San Francisco Unified School
District
San Rafael City Schools
Santa Rosa City Schools
Sausalito/Marin City School
District
Shoreline School District
Sonoma County Charter

Schools Sonoma County Office
of Education
Tamalpais Union High School
District
West Contra Costa Unified
School District

LEGACY GIVING SOCIETY

*Side by Side's Legacy Society
honors those individuals who
have thoughtfully included our
agency in their estate plans.
By designating a legacy gift to
Side by Side, the services and
programs that they support will
continue to touch the lives of our
clients for years to come.*
Anonymous (3)
Kathryn L. Black & Todd Sparks
Virginia Bertelsen
Sue Clark
Diana & Jeffrey Hill
Elizabeth Johnson
William Jones
Russ & Kathy Ketron
James Dennis Liddell
Carole & Bruce MacPhail
Nora J. McCallie
Mr. & Mrs. Richard K. Robbins
John B. Robinson
Robert & Shirley Sanderson
Mary Tash
Cathy Tucker
Charles Walters

GUILD MEMBERS

*The Guilds of Side by Side
formed the backbone of support
for our agency for decades.
From community fundraisers
to the Grape Festival to
birthday treats for the Irene M.
Hunt School, the Guilds have
historically been integral to our
organization. We are honored
to recognize the Glenwood
Guild below for their continued
advocacy and commitment to
the young people that we serve.*

Active Members

Gill Keirle, *President*
Linda Christensen
Alice Cogliandro
Margaret Erickson
Ruth Falkenberg
Carole MacPhail
Barbara Metzger
Bea Newhall
Joy Phoenix

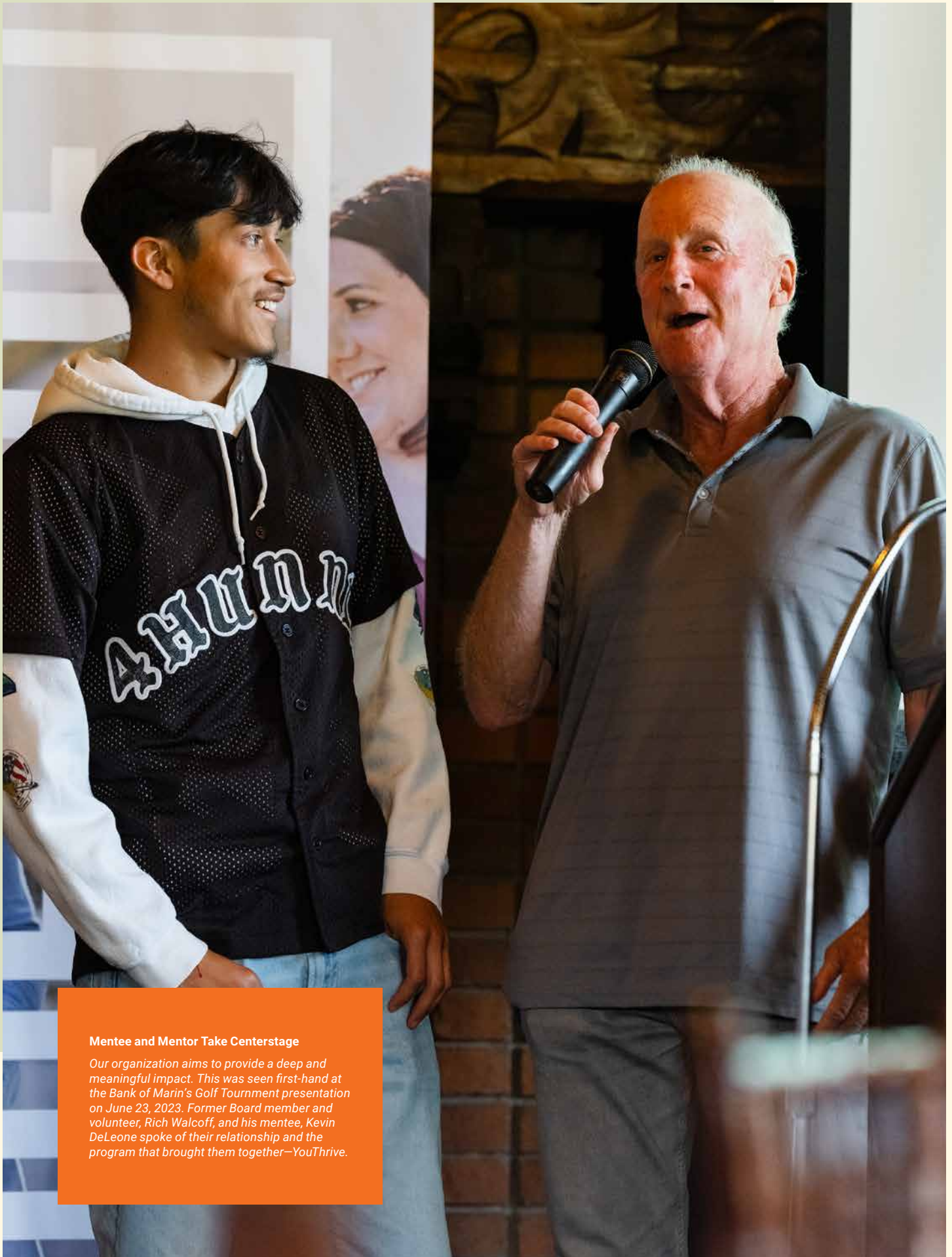
Maggie Polan
Terrie Reyes

Supporting Members

Joyce Anderson
Kathy Barrass
Sue Moore
Anne Nelson
Vivi-Anne Regstad
Kay Schmitt
Jan Smith

IN-KIND DONORS

101 Surf Sports
AmÈlie CafÈ and Wine Bar
Amici's East Coast Pizzeria
Ashley Morgan Designs
Asian Art Museum
Balletto Vineyards
Barrel House Tavern
Bay Area Wine Company
Berkeley Bowl West
Bettinelli Vineyard
Management
Boards & Bottle
Body Kinetics Gym
Boisset Family Estate
Brewsters Beer Garden
Brix Restaurant
Buena Vista Winery
Capital Genealogy
Charles M. Schulz Museum
Cheers Hair Design
Comforts
Deanna Brock and Daniel
Freeman
Diana & Alex Lyman
Dutton-Goldfield Winery
Ed & Gerry's
Elk Fence Distillery
Fortunati Vineyards
Frog Hollow Farm
Glenwood Guild
Golden Gate Bridge Highway &
Transportation District
Gravenstein Grill
Hafner Family Vineyards
Harrington Group
Hiller Aviation Museum
Hog Island Oyster Company,
Inc.
International Orange
Jelly Belly
Jennifer L. Gotti
Joy and James Phoenix
Judd's Hill Winery
Kaiser Permanente Community
Benefits - Marin-Sonoma
Kelleher Family Vineyard
Kendric Vineyard



Mentee and Mentor Take Centerstage

Our organization aims to provide a deep and meaningful impact. This was seen first-hand at the Bank of Marin's Golf Tournament presentation on June 23, 2023. Former Board member and volunteer, Rich Walcott, and his mentee, Kevin DeLeone spoke of their relationship and the program that brought them together—YouThrive.

Kentfield Fire Protection District
 Korbel Champagne Cellars
 Laser Center of Marin
 Longway
 Love Story Yoga
 Maas Clinic
 Marin Landscape Materials
 Marin Magazine
 Marin Raw
 Marin Symphony
 Marinistas
 Martin Ray Vineyard & Winery
 McEvoy Ranch
 Metta Yoga
 Michael Merrill Design Studio
 Monterey Bay Equestrian
 Mountain Play Association
 Mr. and Mrs. James Phoenix
 Mr. and Mrs. Phil Byer
 Neurobehavioral Clinic & Counseling Center
 North Bay Business Journal
 Nugget Markets
 Oakland Zoo
 Pacific Pinball Museum
 Peacock Gap Golf Club
 Point Reyes Farmstead Cheese Company
 Ram's Gate Winery
 Red Car Wine Co
 San Francisco Giants Community Fund
 San Francisco Zoological Society
 Scandia Family Center
 Schumacher Photography

Shauna and Tom Keenan
 Smuin Ballet
 Swirl San Anselmo
 Thai Smile
 The Color Lounge
 Treasury Wine Estates
 Uncommon Grounds Coffee
 Vertly
 Wendy & John Buscaglia
 Wine Country Cyclery
 X'CORE Studio

HOLIDAY GIVING COMMUNITY PARTNERS

The following generous community partners help make sure that every Side by Side client has a gift for the holidays.
 Book Passage
 Kids Bike Lane
 Marin Country Mart
 Mill Valley Middle School
 Secret Santa of Sonoma County/ Center for Volunteer and Nonprofit Leadership
 Temple Beth Sholom (San Leandro)

VOLUNTEERS

Side by Side gratefully thanks the volunteers and organizations listed below who have spent countless hours helping with our 2022-23 events, office administration, and program support.
 Kevin Abaya

Sheila Aceves
 Paola Arandia
 Alan Barbosa
 Emma Barbosa-Boehm
 Beatriz Behrens
 Karen Bischoff
 Lito Briano
 Michael Broughton
 Jackson Burton
 Sarah Burton
 Brandi Campbell
 Elizabeth Capp
 Andrea Chester
 Pat Collins
 Bruno de Sousa
 Margaret DeVore
 Kelly Duenas
 Elizabeth Estes
 Maria Ferreira
 George Freeman
 Eostrix Garcia-Freedman
 Kara Ghilotti
 Parker Hansel
 Val Hansel
 Nicole Harrop
 Andrea Henderson
 Cynthia Hollins
 Ashley Hurd
 Negar Iravani
 Karen Jackson
 Bradley Jones
 Seran Kim
 Jeanette Lager
 Donatella Levintow
 Jeffrey Madlangbayan
 Samantha McCandless
 Mason McCandless

Marla McLaughlin
 Jennifer Miller
 Marybeth Moser
 Madison Munson
 Declan Murphy
 Maggie Paula
 Cheryl Payan
 Nicholas Post
 Julie Quater
 Patty Rahmer
 Katie Rice Jones
 Tammy Romero
 Betsy Ross
 Misty Rudolph
 Carole Shook
 Evan Sjostrom
 Ronin Wong
 Sai Wong
 Jaiden Woodworth
 Cati Young
 Jeremy Yu

In preparing this report, we made every effort to ensure that it is accurate and complete. If there is an error or omission, please accept our apologies and notify the development department at development@sidebysideyouth.org so we can correct our records. This report lists all cash gifts received between July 1, 2022 and June 30, 2023. Cash gifts made after that date will be published in next year's report. In-kind gifts associated with an event held during the 2022-23 fiscal year are included in this report regardless of the date of receipt.

WAYS TO GIVE SidebySideYouth.org/ways-to-give



Monthly Giving Switch to sustained monthly giving via credit card to provide Side by Side with regular support we can count on.



Legacy Giving Leave a lasting legacy by designating a future gift through your estate plan.



Company Match Increase the value of your gift by taking advantage of your workplace's matching gift program.



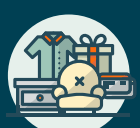
Stock Gifts of appreciated securities can be an easy way of making your charitable dollars go further.



Vehicle Donations Have an old car taking up space in your driveway or a need to free up your boat slip? Donate it to Side by Side!



EScrip Raise money for Side by Side each time you shop at United Markets, Woodlands Market, Oliver's or other local grocery stores!



Give In Kind Contributions of donated goods and services help stretch our program budgets that much further.



Online Donations You can make a gift securely online at SidebySideYouth.org anytime, day or night.



300 Sunny Hills Drive, Bldg. 5
San Anselmo, CA 94960
Tel: 415-457-3200

Return Service Requested

SidebySideYouth.org

Facebook icon sidebysideyouth

Instagram icon sidebysideyouth

X icon @sidebyside4kids

LinkedIn icon sidebysideyouth

NONPROFIT
RATE



Join Us for an Event this Year!

WINTER.

MARIN VALENTINE'S BALL

The Marin Valentine's Ball is held in February at the Marin Civic Center in San Rafael. It is an elegant evening of cocktails, hors d'oeuvres, fine dining, and auctions, followed by dancing to the music of Wonder Bread 5. The Ball supports the critical work of North Bay Children's Center, the Godmothers of Catholic Charities St. Vincent's School for Boys, and Side by Side.

SPRING

IRENE M. HUNT CAPITAL CAMPAIGN REVEAL

Donors are invited to tour the Capital Campaign remodel they generously supported

GLENWOOD GUILD'S ANNUAL BINGO DINNER

Since 1966, the Glenwood Guild has supported Side by Side's programs and services including the annual BINGO event for youth in Marin County. Eventgoers play BINGO games, win fabulous raffle prizes, and walk away with the knowledge that their support made a difference for at-risk youth served by Side by Side's Irene M. Hunt School.

SUMMER

BANK OF MARIN GOLF TOURNAMENT

Founded in 1995 by former Side By Side Board president and co-founder of Bank of Marin, J. Patrick Hunt, Bank of Marin Golf Tournament will tee-up for its 30th year. Get your foursome together early to be included in this sell-out summertime event at the Medow Club.

QUEER LOVE YOUTH PRIDE EVENT

Started in 2013, The Queer Love Youth Pride (QLYP) Event is an Our Space-produced event that celebrates LGBTQIA+ interconnectedness and brilliance with performance, activities, food, and community. This entirely youth-centered event makes for a community safe space where young adults can have fun and enjoy themselves.

FALL

REACH FOR THE STARS GALA

Each year, Reach for the Stars Gala shines brightly with community service and community stars raising funds to support Side by Side's Bay Area youth mental health services. The gala includes a cocktail party, dinner, music, and always a special guest.

Learn more at SidebySideYouth.org/events