



WITH **YOUTH**,  
THROUGH ADVERSITY

SidebySideYouth.org

# ANNUAL REPORT 2023-2024 At a Glance

## *Building Brighter Futures*



**1,759**

Youth & Families  
Served

**Time Spent  
with SBS  
Clients**

Hours of  
Clinical Service  
**11,614**

Hours of  
School-Based Time  
**119,630**

Hours of  
Community Outreach  
**9,603**



Reporting Dates July 1, 2023 – June 30, 2024

## Board of Directors

Deanna Brock, *President*  
Howard Schomer, *Vice President*  
Tim Myers, *Treasurer*  
Ryan Stone, *Secretary*  
Danielle Adams  
Melissa Blach  
Jennifer L. Gotti  
Bernadette Miller  
Ina Miller  
Joy Phoenix  
Vamsey Palagummi  
Darwin Pangilinan  
Dale Satake

## Agency & Program Leadership

Christine Isana Garcia, *Chief Executive Officer*  
Jamila McCallum, *Chief Program Officer*  
Alan Hencky, *Chief Financial Officer*  
Karen Bischoff, *Director of Property and Risk Management*  
Sheila Aceves, *Director of Development*  
Tiffany Vigil, *Director of Human Resources*  
Jolene Yee, *Director, Irene M. Hunt School*  
Matthew Holt, *Regional Director, East Bay*  
Denisse Mendoza, *Regional Director, North Bay*  
Beatriz Behrens, *Program Manager, Community Counseling North Bay*  
Jasmine Cervantes, *Program Manager, Our Space*  
Ahnjolique Haskins, *Program Director, Real Alternatives*  
Vernon Pope-Banks, *Program Manager, YouThrive*  
Laura Taylor, *Program Director, TAY Space*

## Editorial Team

Katie Rice Jones, *Editor-in-Chief*  
Sheila Aceves, Jasmine Cervantes, Christine Garcia, Marla McLaughlin, Denisse Mendoza, Katie Rice Jones, and Julie Quater, *Writers*  
Katie Ravas for Drew Altizer, Chris Constantine, Paige Green, Andrew Hida, and Katie Rice Jones, *Photographers*  
Betsy Ross, *Data Cruncher*  
And Them, *Designer*

On the Cover: Heart artwork created by Mason K., age 11, a student at Side by Side's Irene M. Hunt School in San Anselmo, CA.



## LETTER FROM CHRISTINE

In ever-challenging times, Side by Side continues to remain committed to our Mission and Vision. The 2024 statistics from Mental Health America reveal that youth across the country are reporting ever-increasing mental health challenges, with few getting the help they need. In the past year, 20% of youth received a diagnosis of major depression, with 13% of youth reporting suicidal ideation. The youth mental health crisis clearly continues, and we are so grateful for the continued support of our community partners, grantors, and donors in these challenging times.

Our numbers tell an interesting story. If you ask our staff about how busy they've been, they will inevitably say that they've been more exhausted than in previous years. And yet, at face value, our numbers served appear to have decreased. What's going on?

What you don't see is the depth and number of crises our staff have managed, the increase in diagnostic severity across all programs, and the work we've done with community stakeholders to increase awareness and support for troubled youth. We have worked harder, spent increasingly more time with youth struggling through academic and emotional issues, complex trauma, and an increasing feeling of alienation they feel from their communities. The field that we work in has changed, and we have changed to ensure we haven't missed a beat with our youth.

In June 2024, we made a difficult decision to close our YouThrive program, as our in-depth analyses revealed that schools had begun adopting aspects of our model, thereby demonstrating the program's impact on the community, which we considered a measure of success. Without pausing our work with YouThrive youth, our North Bay team moved with the changing environment. Side by Side folded the active ingredients of YouThrive into our Community Counseling North Bay service program, Raíces Unidas, thus ensuring that students continue to receive early intervention support that YouThrive provided.

Side by Side also expanded its service offerings to include Enhanced Care Management, which provides intensive case management to any Medi-Cal recipient, both within and outside of our programs. Enhanced Care Management serves to support and teach youth the practical skills necessary to access medical and dental care, housing, and self-advocacy, thereby supporting the current services they receive from Side by Side to facilitate independent living further.

With your ongoing support, we will continue to walk side by side with them, ensuring and reassuring them they do not move forward alone, and that we remain a strong community together.

With gratitude,

Christine Isana Garcia, Psy.D.  
Chief Executive Officer  
Side by Side

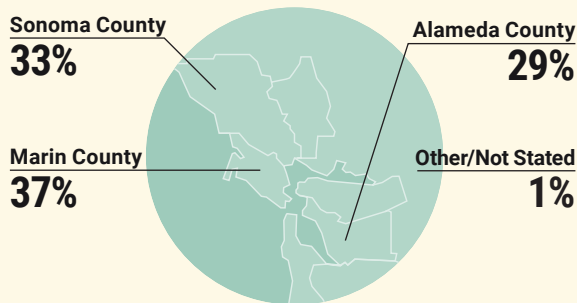


# A PORTRAIT OF SIDE BY SIDE

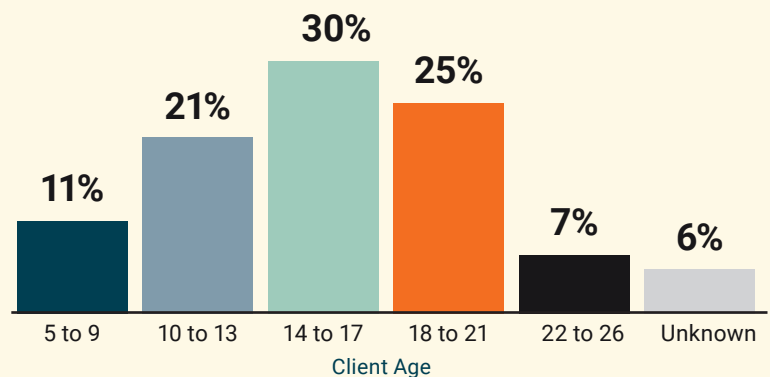
## CLIENTS AND STAFF BY ETHNICITY



## CLIENTS BY GEOGRAPHY



## CLIENTS BY AGE



Clients served by multiple SBS programs:

6%



Clients who are Medi-Cal or Free/Reduced Lunch eligible:

82%



## DIRECT CARE STAFF

- 33 Clinicians & Case Managers
- 9 Youth Specialists & Advocates
- 19 Teachers & Behaviorists
- 12 Aides & Teaching Assistants

\* Figures on this page do not include drop-in clients.

# WE ARE HERE. NO MATTER WHAT.



**SINCE 1895, SIDE BY SIDE** has worked tirelessly to ensure that all young people have the opportunity to thrive. This includes creating safe spaces for diverse opinions, beliefs, and ideas, fostering a community that is inclusive regardless of race, creed, country of origin, immigration status, religious or political beliefs, sexual orientation, gender expression, gender identity, or physical and mental ability.

For many of our youth who identify as immigrants, BIPOC, LGBTQIA+, the current environment has created deep uncertainty, stress, and fear. Our commitment to our Mission is unwavering despite shifts in the social landscape. For 129 years, our north star has not changed. We walk side by side with young people impacted by adversity toward a future with connection and meaning.

Together, we can build a future where mental and emotional health is a priority and where every youth has access to the care and resources they need to lead healthy, fulfilling lives.



# PROGRAM HIGHLIGHTS

**BEHAVIORAL CHALLENGES, EMOTIONAL DIFFICULTIES, AND MENTAL HEALTH ISSUES OFTEN REVEAL THEMSELVES IN CHILDHOOD AND EARLY ADULthood.** These challenges and issues can impact a young person's functioning at home, in school, and in the community. We view our work as a partnership between youth, parents, other caregivers, and treatment teams. Together, we can help young people identify and understand their feelings, learn effective coping skills, thrive in school, and begin to heal from life's challenges.

## IRENE M. HUNT SCHOOL Special Education (Marin County)

96 students served this year

The Irene M. Hunt School in San Anselmo is a non-public day school serving K through 12th-grade students with social, academic, emotional, and behavioral challenges that cannot be supported in the public school system. The overarching goal of the Hunt School is to return students to their neighborhood mainstream schools equipped with the skills to thrive socially and academically. Group therapy services further support the students and help promote earlier and more successful graduations. The school features small class sizes (3:1 student-to-staff ratio) separated for elementary, middle school, and high school and offers a therapeutic environment where students develop the capability to regulate their behavior, maintain focus and resilience, and form healthy, trusting relationships, and succeed in academics. The academic curriculum is individualized and supplemented with a wide range of enrichment activities and a school-wide positive behavior program. In addition, students receive personalized mental health treatment



and other specialized services according to their Individualized Education Program plans. Behavior coaches on the Hunt staff provide evidence-based behavior interventions that result in a reduction in negative behaviors, an increase in adaptive coping strategies, and resiliency.

## TAY SPACE Acute Emotional and Mental Health Services (Marin County)

200 young people and family members served this year

TAY Space in downtown San Rafael serves youth ages 16 to 25 who struggle with acute mental and/or emotional disorders including bipolar disorder, schizophrenia, anxiety, and depression. A multi-disciplinary team works with up to 28 youth at any given time to provide individualized treatment plans and case management; links to resources for housing, education, and employment services; and coordinated individual therapy and psychiatric services. TAY Space manages an apartment for qualifying clients in need of transitional housing. TAY Space also functions as a drop-in center for any youth in Marin in need of a safe place and a community of other transitional-age youth. On a drop-in basis, TAY Space offers job coaching, substance abuse recovery services, workshops on stress reduction and mindfulness, money management, and independent living skills. The drop-in center also provides connections to critical social opportunities such as in-center games, potlucks, and birthday parties as well as outside movies and field trips. Twice a week the center also serves as a food distribution point for hungry youth and



stocks an emergency closet with toiletries, diapers, sanitary supplies, and basic clothing. The goal of TAY Space is to help transitional-age youth gain the foothold they need to thrive beyond their diagnoses and histories.

# YOUTHRIVE

## K-12 Early Intervention & Prevention (Marin and Sonoma Counties)

255 young people and family members served  
(Sunsetted in June 2024)

YouThrive's early intervention program served students in grades K through 12. The program aimed to prevent social-emotional challenges, truancy, academic failure, drug and alcohol abuse, and the escalation of criminal behavior, gang involvement, and violence while helping young people increase their commitment to their education, personal development, and community. The program offered 10-week group sessions during the fall and spring semesters and was embedded in elementary, middle, and high schools in Marin and Sonoma Counties. The groups addressed anger management, life skills, gang prevention, and restorative justice. Individual counseling and mentoring was paired with regular monitoring of grades, school attendance, and disciplinary actions. When school behavior, grades, and attendance improved,



students earned extended trips (beach, theme park, or ballgame) and multi-day excursions (like rafting and wilderness camping). The benchmarks for success included reduced anxiety, depression or other mental health challenges, improved grades, school attendance and behavior, and improved relationships with peers and adults in school and at home.

# OUR SPACE

## LGBTQIA+ Support (Alameda County)

319 young people and family clients served this year

Our Space provides a vibrant safe space located in Hayward where LGBTQIA+ youth ages 13 through 24 can express their authentic selves and feel seen, accepted, and celebrated. Our Space also provides specialized support services for adult caregivers and families, as well as training for staff from schools, clinics, and other service providers working with LGBTQIA+ youth. The workshops for professionals deepen their understanding of LGBTQIA+ youth challenges and increase their effectiveness in addressing those issues. As the only youth LGBTQIA+ provider in Southern Alameda County and serving over 319 queer and trans youth and families each year, Our Space receives referrals for disconnected LGBTQIA+ youth in or at risk of entering the foster system who are at high risk of further isolation, or are unhoused due to their sexual orientation, gender identity, or gender expression. Approximately 75% of Our Space members are youth of color. The program also offers LGBTQIA+ peer support groups in schools, community-based mental health and one-on-one case management, intergenerational community-building activities, paid youth leadership opportunities, as well as a community center with drop-in hours, a gender-affirming clothing closet, life-skills workshops, and monthly community days.

Our Space additionally hosts Queer Love Youth Pride each year. The event is all about uplifting and celebrating our LGBTQIA+ youth. Over 350 eventgoers take in dazzling entertainment, enjoy delicious food, and learn about community resources.





# REAL ALTERNATIVES

## Supportive Housing and Wraparound Services for Transitional-Age Foster and Probation Youth (Alameda County)

33 young people and family members served this year

Located in Hayward, Real Alternatives offers a continuum of transitional housing opportunities in Southern Alameda County for current and former foster youth and/or those on probation ages 18 to 24. Beds are available in a range of living accommodations including one to three-bedroom apartments. For all participants, the program provides a safe environment for youth to take responsibility for their lives in as many areas as possible and develop goals for the future, all the while having a safety net. Supported by our staff, youth learn to budget and pay bills, shop for groceries and cook, live with a roommate, pursue an education, and find and maintain employment. All Real Alternatives clients have access to mental health services and are also supported in building and/or repairing relationships, learning new coping skills,



and managing any mental health symptoms. Crisis intervention and emergency support are available 24/7. In a five-year longitudinal study of Real Alternatives, Side by Side found that graduates had high levels (98%) of stable housing and similarly high levels (92%) of high school graduation rates. For more information on the study and its results, visit [www.SidebySideYouth.org/programs](http://www.SidebySideYouth.org/programs).



**DEE\* IS A 19-YEAR-OLD WOMAN WHO HAS SURVIVED EXTENSIVE CHILDHOOD TRAUMA. SHE LOST HER FATHER TO A DRUG OVERDOSE SHORTLY AFTER SHE WAS BORN, WITNESSED DOMESTIC VIOLENCE FROM AN EARLY AGE, AND EXPERIENCED CHRONIC HOMELESSNESS WITH HER MOTHER, WHO STRUGGLED WITH SUBSTANCE ABUSE AND MENTAL ILLNESS. THROUGHOUT HER YOUTH, DEE FACED NUMEROUS FOSTER CARE PLACEMENTS AND ENDURED LONG-TERM ABUSE AND NEGLECT.**

As a young adult, Dee continues to navigate significant uncertainty, including overcoming deeply internalized negative messages from her childhood. However, since accessing Real Alternatives housing and services, Dee has shown remarkable commitment to her personal growth. She rarely misses an individual therapy session, perseveres through her painful

## DEE'S STORY

internalized messages, manages intense mood swings, and serves as a positive role model for her younger siblings.

Her Housing Case Manager and Clinician describe Dee as a highly intelligent, unique individual with immense depth in her analysis of the world, heightened spiritual awareness, and compassion. Dee courageously demonstrates a strong commitment to social and environmental justice, fights gender oppression, and is an ally to people of color. She passionately discusses ways to improve the world and spends her free time listening to music, painting, and serving others.

Over the years, Dee has overcome barriers to education, employment, family ties, and her own inner peace. The staff who work with Dee believe that with support, she will continue to grow and heal, achieving greater stability and resilience in the years to come.

To donate to our programs, use our QR Code or visit us at [www.SidebySideYouth.org/donate](http://www.SidebySideYouth.org/donate)



*\*Name changed and some details altered to protect confidentiality.*



# ENHANCED CARE MANAGEMENT

(currently in Alameda County)

4 clients served this year. (Launched in May 2024)

Enhanced Care Management takes a whole-person approach to supporting youth obtain medical care, housing, and identifying school and job opportunities so they don't have to walk alone on the path to independence. Our clients feel seen and understood and can gain independence through our multidisciplinary teams' support. ECM was added to Side by Side's suite of services in May 2024, and is based in Alameda (and coming soon: serving the North Bay). It offers personalized intensive care coordination for youth with complex medical and mental health needs.

ECM believes early intervention is crucial for managing youth mental health, preventing the progression of disorders, and promoting better health and well-being through ECM's comprehensive support.



# COMMUNITY COUNSELING

(Alameda, Marin, Napa, and Sonoma Counties)

317 young people and family members served this year. Raíces Unidas served 178 youth.

Side by Side's Community Counseling services are individualized and offered throughout Alameda, Marin, Napa, and Sonoma Counties for youth between the ages of 5 through 26. Informed by a holistic understanding of a young person's history and strengths, this program supports the development of coping skills and strategies to help a young person function more effectively, attain stability, and develop a sense of personal agency. A spectrum of community-based services are offered to respond to the specific needs of a young person and their family. This includes a range of school-based and clinic-based services to K through 12th-grade students in public schools that include individual and family counseling, therapeutic groups, medication evaluation/support (at our Santa Rosa office), and IEP counseling. While YouThrive programming sunsetted in June 2024, one of its programs—Raíces Unidas—continues under Community Counseling North Bay. This initiative provides culturally sustaining practices and offers resources to Latinx youth and families needing early education and mental health counseling.





# GIVING GUILDS

Marin's Grape Festival circa 1960s

GUILDS IN MARIN HAVE BEEN PIVOTAL IN SUPPORTING SIDE BY SIDE, FORMERLY KNOWN AS SUNNY HILLS, THROUGH THEIR DEDICATED VOLUNTEER EFFORTS AND CREATIVE CONTRIBUTIONS. AMONG THESE GUILDS, THE GLENWOOD GUILD STANDS OUT FOR ITS LONGSTANDING COMMITMENT TO THE AGENCY. THIS GUILD, ALONG WITH OTHERS, HAS BEEN INSTRUMENTAL IN ORGANIZING EVENTS, CRAFTING GOODS, AND PROVIDING ESSENTIAL SUPPORT TO THE YOUTH SERVED BY SIDE BY SIDE.

Established in 1966, the Glenwood Guild played a significant role in supporting the beloved Grape Festival. This event not only brought the community together but also raised significant funds and awareness for the agency's programs. Members of the Glenwood Guild and other local guilds spent countless hours creating handmade crafts, baked goods, and other items to sell at the festival, ensuring it was a memorable and successful event each year.

The contributions of these guilds extend beyond the Grape Festival. Over the years, guild members have volunteered their time and skills to support various initiatives, from holiday gift drives to educational workshops. The Glenwood Guild continues to fundraise for Side by Side with its annual Bingo Night each spring. Their dedication and creativity have made a lasting impact on the lives of the students at Side by Side's Irene M. Hunt School.

 <p><b>WINIFRED B. ALLEN GUILD (FOUNDED 1988)</b> Ylloren The ripple of the Bay waters whirled in the Belvedere Guild in 1983. The Guild was named in 1988 to honor founding member Winifred B. Allen, whose family had lived in Belvedere for five generations.</p>	 <p><b>BARGAIN BOX AUXILIARY (FOUNDED 1968)</b> Grandma's Trunk The Bargain Box Thrift Shop opened its doors in 1951, raising money to build a house on the Sunny Hills campus for the Director. At the Grape Festival, the Auxiliary sells ribbon, lace, linens, and vintage clothes from "Grandma's Trunk." Throughout the year, these treasures can be found at the Bargain Box in San Rafael.</p>
 <p><b>GREENBRAE ACORNS (FOUNDED 1961)</b> Acorn Wreath This guild was the second to be founded in Greenbrae, the first being the Greenbrae Oaks. The Oaks were the "older ladies" and the new group, the Acorns, were the new kids on the block. Thus, the Acorns from the mighty Oaks.</p>	 <p><b>STAFF AND STUDENTS</b> Sunny Hills Children's Garden Logo For 100 years, both dedicated staff and hardworking students have participated in Grape Festival. The block depicts the agency's logo adopted in 1959 when Sunny Hills and Children's Garden merged to provide services to children from birth to 22 years of age and their families.</p>
 <p><b>COMMUNITY VOLUNTEERS</b> Hearts and Hands The traditional quilt design of hands and hearts represents the thousands of individual and group volunteers who have been a major part of Grape Festival over the past 100 years. It also honors the business sponsors that have underwritten the festival, ensuring its success.</p>	 <p><b>PEACOCK GAP GUILD (FOUNDED 1969)</b> Peacock The Guild has always been active in the food area but really took flight with turkey sandwiches. Since 1996, their Caesar salads have made them proud as peacocks.</p>
 <p><b>NUVATO GUILD (FOUNDED 1952)</b> Walnut Tree &amp; Mt. Burdell When the Guild was founded, Nuvato was a walnut growing community. Guild members climbed trees, shook the walnuts down, then gathered, plucked, chilled, and pickled the walnut meats. This was followed by bread and candy baking as well as making walnut wreaths. Fifteen hundred pounds of walnuts go into the 800 pounds of candy sold annually at Grape Festival.</p>	 <p><b>MARIWOOD GUILD (FOUNDED 1962)</b> Christmas Mariwood's theme at Grape Festival has been "Christmas in October." The handmade ornaments, trees, Nat logs and decorations have become cherished items in hundreds of homes throughout Marin.</p>
 <p><b>TERRA LINDA GUILD (FOUNDED 1958)</b> The Bake Shop Always the place to indulge your sweet tooth, the Chocolate Booth became the Sweet Shoppe in 1973 and was renamed the Terra Linda Bake Shop in 1986. The delectables, one of the most popular items in their famous "Better Than Sex Cake."</p>	 <p><b>SAN RAFAEL GUILD (FOUNDED 1947)</b> Tamarie Pie One of the first guilds, San Rafael was organized as the Friends Booth. However, at the block shows, the Guild's tamarie pie was an extremely popular item for over thirty years.</p>
 <p><b>GUILD DEVELOPMENT</b> Grape Cluster The grape cluster honors all the women who have joined together in different communities to work for the good of Sunny Hills and Grape Festival for a century. The Guild system, formally organized in the 1930s, evolved from the early days of Grape Festival when individual groups of friends worked together most of the year to produce the wares they offered at the festival.</p>	 <p><b>KENT WOODLAND GUILD (FOUNDED 1951)</b> The Country Store The Country Store has provided many homemade items - jams, jellies, marmalades, confections, stuffed eggs, candy trays, stuffed animals, T-shirts, paper leis, and hand made items.</p>
 <p><b>FAIRFAX GUILD (FOUNDED 1951)</b> Snifcones &amp; Hot Dogs One of Fairfax's outstanding ones at Grape Festival was the 1950s when they sold "Snifcones" (sniffles, snails, and dried flowers). The Fifties and Jetsons era included trips to the beach where the group had fun gathering seashells from the seashore. At the block depicts, Snifcones and barbecued hot dogs were a major draw for many years.</p>	 <p><b>REDWOOD GUILD (FOUNDED 1957)</b> Ms. Tam &amp; Chutney Over the years, Redwood has made a variety of food items - marmalades, jams, and spiced green beans, but since 1955 their chutney has been the most famous. The recipe is from Colleen Wellington, one of the original members. Deciding to go one better on Major Greg, Colleen Wellington was promoted to Colonel. Every year 700 jars of her chutney are sold at Grape Festival.</p>
 <p><b>ROSS BROOKWOOD GUILD (FOUNDED 1957)</b> Elegant Elephant Gingham hats in a pucker design (very odd, but very popular) to decorated stone hats from Idaho earned the guild the name of "The Mad Matters." Now, the members spend all year collecting lovely items to include in their "Elegant Elephant" booth.</p>	 <p><b>MADERA GUILD (FOUNDED 1953)</b> Halloween Autumn officially begins with a visit to the Madera Booth to feast on pumpkin pie and to select handmade Halloween crafts including witches, cats, and cloth pumpkins for Halloween treats. Every Wednesday throughout the year a workshop is held where the crafts are lovingly made.</p>
 <p><b>BOARD OF DIRECTORS (FOUNDED 1955)</b> Sunny Hills Gates For over a century, the Board of Directors has met the awesome task of maintaining the fiscal and moral integrity of Sunny Hills. With the 1999 merger with Children's Garden, the Board has continued its history of changing to meet the needs of at-risk children.</p>	 <p><b>JUNIOR AUXILIARY (FOUNDED 1946)</b> Gala Ball The quilt block depicts the Auxiliary's famous Gala Ball, that raised money to support the Grape Festival endeavors - the Caspary for teenage games and the fund for younger children.</p>
 <p><b>GLENWOOD GUILD (FOUNDED 1966)</b> Train This young-at-heart Guild has had a potpourri of products over the years but since 1996 has taken responsibility for the Children's Amusement Area. Four balloons commemorate four decades of the Glenwood commitment to Grape Festival. The fifth balloon represents its dedication to the future.</p>	 <p><b>ROSS VALLEY GUILD (FOUNDED 1946)</b> Ms. Tam &amp; Agnes One of the earliest guilds, Ross Valley met at the Sunny Hills Daycare to mend the children's clothes. When asked to participate in Grape Festival, the guild took advantage of their sewing skills to make unique aprons and pot holders to sell.</p>

A testament to the guilds' enduring legacy, a quilt was created representing 20 longstanding guilds. Today, this quilt hangs in the Side by Side Anselmo office with much pride.

# SIDE B Y SIDE

## THEORY OF CHANGE

Early intervention and intensive, home-based services for at-risk children and youth on pathways to emotional, social, and functional wellness.

## Vision for Social Impact

Youth in our communities are resilient and have the resources to thrive and nurture the next generation.

### Program Services

- Intensive Case Management
- Behavioral Health Care
- Special Education
- Supportive Housing
- Youth Development

### Early Outcomes

#### Engagement

Client engages in program

#### Self-awareness

Client identifies and communicates strengths, needs, and goals

### Intermediate Outcomes

#### Skill Building

Client gains coping skills, practices self-care, and safer behavior

Client gains social skills, awareness of community, and uses pro-social behavior

Client functions in school and gains vocational and other independent living skills

## Guiding Principles

**Client & Community Voice** - We encourage clients and families through a strengths-based perspective to lead their care and services, as the experts on their lives, experiences, and communities. We use a trauma-informed lens to ensure we see them as complete, dynamic, complex and capable people.



# CHANGE

ve, holistic services help  
pathways to achieve  
onal well-being.

## act

silient and have the  
the next generations.

## Intermediate Outcomes

### Competence

Client has positive self-worth, and uses coping and emotional skills to stay in balance

Client has positive, supportive relationships and accountability to the community

Client applies skills to access resources and prepare for life transitions

## Long-Term Outcomes

### Emotional Well-Being

A well-grounded sense of self, a future story, and the ability to manage stress, emotions, and behaviors

### Social Well-Being

Permanent, healthy connections to others, and responsibility to the greater community

### Functional Well-Being

Initiative, self-determination, and sound decision-making to meet challenges and life goals

## Values

- ★ Inclusioness
- ★ Integrity
- ★ Compassionate Empathy
- ★ Transparency

**Advocacy** - We advocate for our clients, our staff and our communities in which we work to ensure access to resources and alleviate systemic inequality that impede self-determination and development.

**Continuous Learning** - We use quantitative and qualitative data, evidence-based practices and research to measure and assess program impact for clients and communities. We empower ourselves to try new things to change the status quo.



# HEALING THROUGH MOVEMENT: THE IMPACT OF EMDR THERAPY AT SIDE BY SIDE

BY DENISSE MENDOZA

**IN 2022, SBS RECEIVED A GRANT FROM THE COMMUNITY FOUNDATION OF SONOMA COUNTY, ENABLING OUR COMMUNITY COUNSELING NORTH BAY PROGRAM (CCNB) TO TRAIN CLINICIANS IN SPECIALIZED MODALITIES TO ADDRESS COMPLEX TRAUMA, SPECIFICALLY FOR LATINX YOUTH AND THEIR FAMILIES IN OUR RAÍCES UNIDAS PROGRAM. ONE OF THE CHOSEN TRAINING COURSES WAS EYE MOVEMENT DESENSITIZATION AND REPROCESSING (EMDR) THERAPY, A FIRST-LINE APPROACH TO RESOLVING COMPLEX TRAUMA.**

EMDR therapy, developed by Dr. Francine Shapiro in 1987, is a type of psychotherapy designed to help individuals process and recover from traumatic experiences. It is particularly effective for treating post-traumatic stress disorder (PTSD) and other trauma-related conditions. EMDR involves a structured process where the therapist guides the patient through a series of eye movements or other forms of bilateral stimulation (like tapping or audio tones) while the patient recalls distressing memories. This process helps the brain reprocess these traumatic memories, reducing their emotional impact and allowing individuals to integrate them more healthily.

EMDR was chosen for our CCNB clinicians due to its multiple benefits:

- **REDUCES SYMPTOMS OF PTSD:** EMDR significantly reduces symptoms of PTSD, including flashbacks, nightmares, and severe anxiety.
- **IMPROVES EMOTIONAL REGULATION:** Processing traumatic memories helps individuals manage their emotions and reactions in daily life.
- **NON-INVASIVE:** EMDR does not rely on medication, making it a good option for non-pharmacological approaches.

Additionally, EMDR can be used in various settings, including



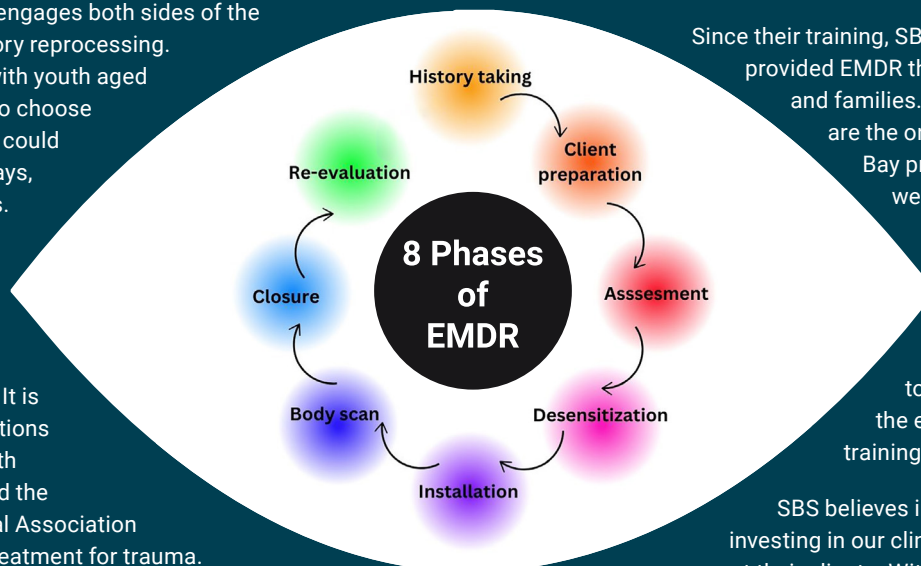


Therapist Denisse Mendoza supporting her client with EMDR therapy

group and family work, apart from individual therapy. Because EMDR can be conducted through eye movement or other bilateral stimulation, it engages both sides of the brain, facilitating memory reprocessing. Given that SBS works with youth aged 5-26, it was important to choose a therapy modality that could be utilized in various ways, languages, and formats. Research has shown that EMDR can be highly effective, often relieving symptoms more quickly than traditional talk therapy. It is recognized by organizations such as the World Health Organization (WHO) and the American Psychological Association (APA) as an effective treatment for trauma.

SBS staff were trained in February 2023, and continued their training for a year with weekly consultations and advanced training in EMDR, specifically related to working with children, Polyvagal

Theory, integrating somatic therapy into EMDR, and EMDR therapy protocols for early intervention and ongoing traumatic stress.



Since their training, SBS's CCNB program has provided EMDR therapy to over 75 youth and families. While it is unclear if we are the only nonprofit in the North Bay providing EMDR services, we know that obtaining EMDR services from a nonprofit organization is rare. This rarity is mainly due to the high cost of EMDR training, which can be up to \$2000 per person, and the extensive time required for training and consultation.

SBS believes in empowering and investing in our clinicians with the tools to support their clients. With the help of grants, SBS was able to obtain this training, provide the necessary time for staff to complete it, and as a result, many youth and families have benefited from this service.



# SIDE BY SIDE COMMUNITY-RAISERS

EACH YEAR, SIDE BY SIDE HOSTS NUMEROUS EVENTS TO RAISE AWARENESS ABOUT THE CHALLENGES FACED BY BAY AREA YOUTH. WE WANT TO EXTEND OUR HEARTFELT THANKS FOR YOUR SUPPORT—BOTH IN DONATIONS AND TIME.

## REACH FOR THE STARS GALA

Side by Side's Reach for the Stars Gala illuminated the night with community spirit and stellar contributions. Held at the Mill Valley Community Center on November 4, 2023, the event raised over \$136,000 for Bay Area youth mental health services. The gala, produced by Side by Side, welcomed 175 attendees from near and far who enjoyed supper-club-style cocktails and dining, jazz music, and a post-dinner set by DJ D Sharp, the official DJ of the Golden State Warriors.

Attendees also heard from Side by Side's CEO, Dr. Christine Garcia, who spoke about the current youth mental health crisis and the agency's mission. California State Senator Mike McGuire graced the event as the honorary emcee, lending his support to the cause.



## THE GIVING TREE

During the holiday season, Side by Side partners with Marin Country Mart to bring joy to our youth through the Giving Tree. This year's festive evening, on November 30, 2023, kicked off with a tree lighting ceremony and featured appearances by our CEO, the Marin Girls Chorus, Santa, and more. This heartwarming event played a large part in the donation of over hundred gifts for Side by Side's youth.







## MARIN VALENTINE'S BALL

The 2024 Ball welcomed 370 attendees who enjoyed cocktails, a seated dinner by Sage Catering, an awards ceremony honoring our former Board member, Joy Phoenix, silent and live auctions, and a post-dinner set by Wonder Bread 5. Special thanks to our emcee, Liam Mayclem, for his lively banter.

Thank you to everyone who attended the Marin Valentine's Ball at the Marin County Civic Center on February 10, 2024. The event benefited three local agencies: North Bay Children's Center, the Godmothers of Catholic Charities St. Vincent's School for Boys, and Side by Side. With your support, we raised over \$325,000 for the vulnerable youth of Marin County.



## IRENE M. HUNT SCHOOL CAPITAL CAMPAIGN REVEAL

The Irene M. Hunt School Remodel Reveal Party on April 5, 2024, gave our capital campaign donors and Board members a chance to tour the renovated facilities. This event provided us a chance to thank them for their amazing support in giving our students new learning spaces for STEM and art, a modernized gym, updated conference room and office, and serenity spaces.



## ALL-SPORTS BINGO DINNER

Supporters won like never before on April 20, 2024, at The Club Restaurant at McInnis Park. The Glenwood Guild threw its Annual ALL SPORTS BINGO Dinner--a fundraiser benefiting Side by Side's Irene M. Hunt School. Eventgoers' support made a difference for at-risk youth served by the school.



# SONOMA HUMAN RACE

The 2024 Sonoma County Human Race on May 4, 2024, was presented by CVNL at Old Court House Square in Santa Rosa. It was a stormy day, but North Bay Regional Director Denisse Mendoza, and Director of Development Sheila Aceves, braved the elements for the 5K walk, along with several staff members from Side by Side's Santa Rosa office.



# BANK OF MARIN 30TH ANNUAL GOLF TOURNAMENT

On June 24, 2024, Bank of Marin hosted its 30th annual golf tournament benefiting Side by Side. Over 120 golfers tested their skills on Meadow Club's course. Bank of Marin President and CEO Tim Myers and Side by Side Board President Deanna Brock spoke during dinner about their inspiration for supporting Bay Area youth. The event successfully raised over \$128k for Side by Side's youth services.



# QUEER LOVE YOUTH PRIDE

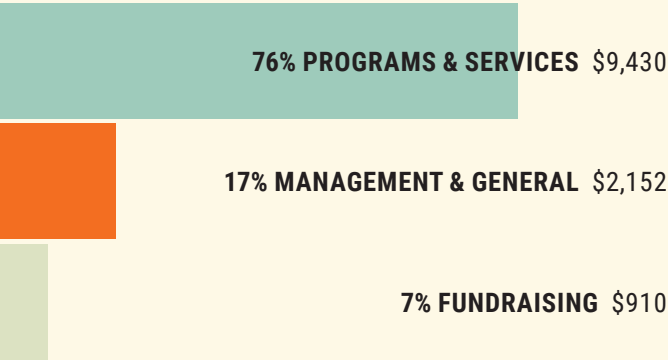
Our Space celebrated their 11th Queer Love Youth Pride (QLYP) on June 22, 2024, at the REACH Ashland Youth Center in Ashland. Produced by Side by Side's Our Space staff and clients, the event highlighted LGBTQIA+ interconnectedness, performances, and brilliance. An Our Space client emceed the evening, which featured five solo acts and three group performances, including song, dance, spoken word, instrumental music, and a drag performance.





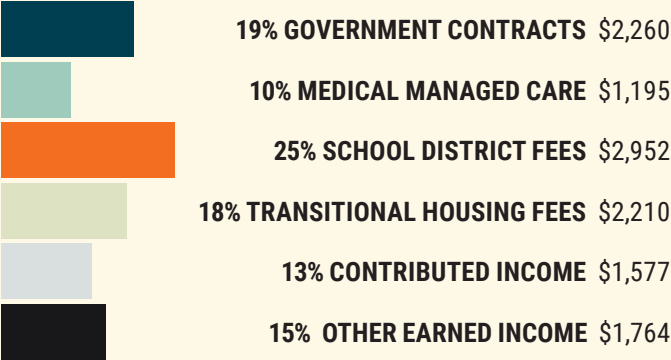
# FINANCIALS

## EXPENSES BY TYPE (% and 000's)



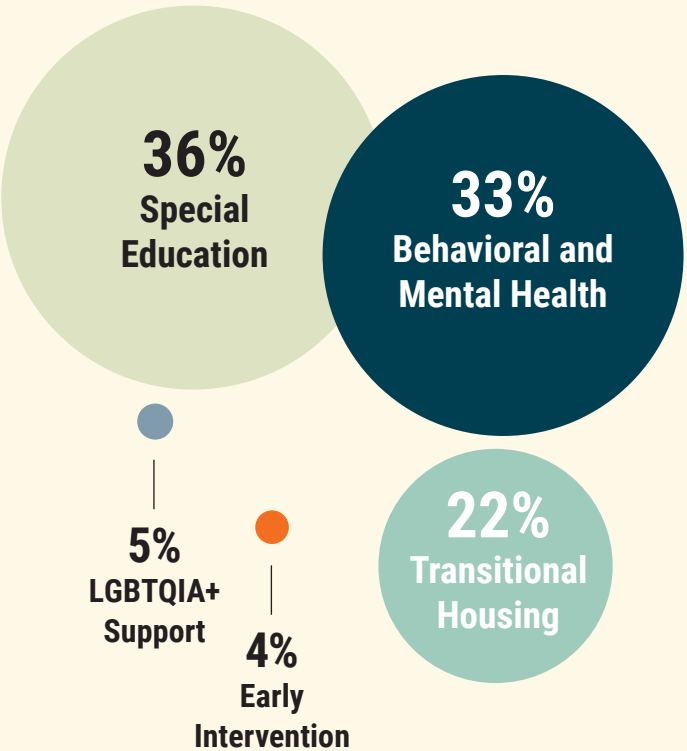
TOTAL \$12,492

## REVENUE BY TYPE (% and 000's)

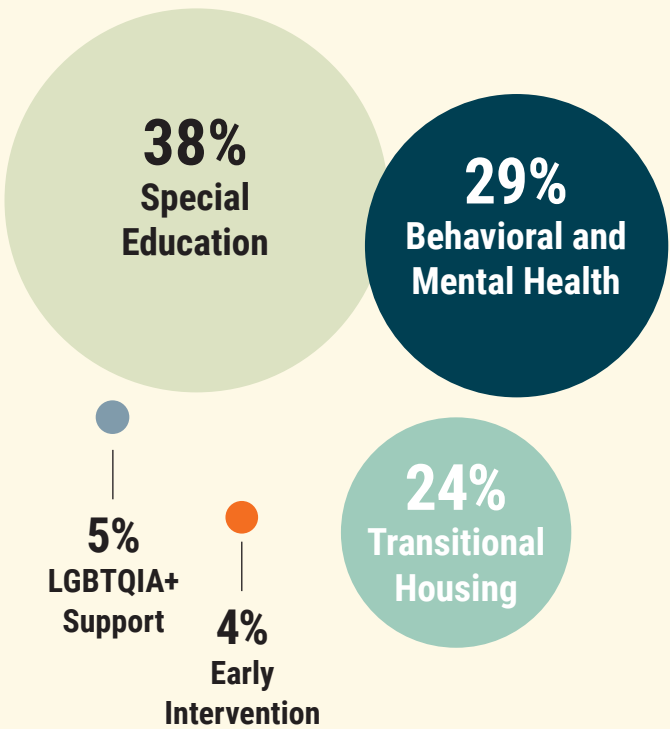


TOTAL \$11,958

## EXPENSES BY SERVICE AREA (% and 000's)



## REVENUE BY SERVICE AREA (% and 000's)



## FINANCIAL POSITION (000's)

Total Assets  
\$23,112

Total Liabilities  
\$16,157

Total Net Assets  
\$6,955



## THANK YOU FOR JOINING SIDE BY SIDE ON OUR JOURNEY.

THE FOLLOWING GENEROUS SUPPORTERS GAVE SIDE BY SIDE CASH GIFTS BETWEEN JULY 1, 2023, AND JUNE 30, 2024. EACH AND EVERY GIFT, NO MATTER THE SIZE, ENABLES US TO WALK WITH THE BAY AREA'S YOUNG PEOPLE IMPACTED BY ADVERSITY ON THEIR UNIQUE PATHS AND PROVIDE THE SAFE SPACE MANY OF THEM HAVE MISSED IN THEIR LIVES. **THANK YOU!**

### **\$50,000 +**

Five Bridges Foundation\*\*  
Patrick Hunt\*\*  
Marin Community Foundation\*\*  
The Raymond & Ricki Syufy Charitable Fund

### **\$25,000 - \$49,999**

Bella Vista Foundation\*  
Fullerton Family Foundation\*\*  
Kaiser Permanente Community Benefits - Marin & Sonoma Counties  
Kaiser Permanente Community Benefits - Greater Southern Alameda County  
LaureL Foundation  
Marin Valentine's Ball\*  
Morris Stulsافت Foundation\*\*  
National Association of Theater Owners of CA/NV  
Sutter Health Eden Medical Center  
The James Dennis Lidell Living Trust

### **\$10,000 - \$24,999**

Anonymous  
Arntz Builders  
Bank of Marin\*\*  
Bernard E. & Alba Witkin Charitable Foundation\*  
County of Marin--Marin Community Service Fund\*  
The Eucalyptus Foundation  
Ferrari Owners Charitable Foundation  
Fleishhacker Foundation

George H. Sandy Foundation\*\*  
Hobson/Lucas Family Foundation  
Horizons Foundation\*  
Jacqueline & David Spielberg\*\*  
Jonas Family Foundation\*  
Sonoma County Vintners Foundation\*  
Tipping Point Community\*  
West Davis & Bergard Foundation\*

### **\$5,000 - \$9,999**

Anonymous  
AHS Foundation\*\*  
Estate of Lois de Banzie  
Barbara M. Burns Foundation  
Bay Area Physicians for Human Rights\*  
Lyndsey & Jimmy Conrad  
Cornell Charitable Fund  
Fenwick Foundation\*\*  
Golden One Credit Union  
Goodwin Family Memorial Trust  
Harbor Point Charitable Foundation  
Heffernan Foundation\*  
Holly Hopper & Charlie Clifford\*  
Robert Kaliski & Linda Nelson  
KCM Investment Advisors\*  
Dr. Catherine Kennedy & Mr. Daniel Grossman\*\*  
KPMG\*  
Marin Sanitary Service\*\*  
Tim & Oksana Myers\*  
Kimberly Rochat & Howard Schomer  
Dale Satake\*

Sharks Foundation  
Speedway Children's Charities\*\*  
United Agencies

### **\$2,500 - \$4,999**

Arntz Family Foundation\*\*  
Autodesk Foundation  
Employee Engagement Fund  
Seth & Amy Barad\*\*  
Charles Bartlett  
Lisa Biddie  
BioMarin Pharmaceutical, Inc.  
Bon Air - Greenbrae\*  
W. Bradley Electric, Inc.\*\*  
Brown Real Estate  
Barbara Carbone & Gregg Lyman\*\*  
Chamberlin Family Philanthropy  
Ema Davila & Dave Bromberger  
Mary Denton & Monte Deignan\*\*  
Joe Genovese  
Ghilotti Construction Company\*\*  
Jennifer L. Gotti\*\*  
Julia L. Grant Donor Advised Fund of CFSC  
Robert H. Greene Real Estate  
Nannette Griswold\*\*  
Michael Kruger  
Denise Lucy & Francoise Lepage\*  
March Capital Management  
Kathlyn McPherson Masneri & Arno P. Masneri Fund\*\*  
Mr. Jon Nakamura  
Vince O'Driscoll

Pacific American Group  
Private Wealth Partners LLC  
Relevant Wealth Advisors, LLC  
Nancy & Richard Robbins  
Rohan, Wallace and Aherne  
Safeway Foundation  
Sandia National Laboratories  
Charles Silverman\*  
Venable Foundation  
Anne Zepecki

### **\$1,000 - \$2,499**

Active 20-30 Club of Santa Rosa #50\*  
Belvedere Fund\*\*  
Julie Ballard  
Bandana Digital  
Jean & Stuart Brown\*\*  
J. Patrick Burke\*\*  
Sue & Joe Carlomagno\*\*  
The City POS  
Gayle DeKellis & David Clayton\*  
Judy Digiorgio  
Erickson Family Fund\*\*  
Jennifer Finger  
Charles Gardiner  
Rachel Garst  
Anne Golden  
Harrington Group\*  
HCA Management  
The Heck Foundation  
Yuliya & Reed Kathrein  
David Lechuga  
Miriam & Drew Manning  
Marin Charitable\*\*  
Deborah N. Matthies\*\*  
Robert & Suzanne McLennan\*\*  
Bernadette Miller  
Ina Miller



Montecito Plaza Shopping Center\*\*  
 Candace Neal-Ricker  
 Nelson Family of Companies\*  
 Neurobehavioral Clinic & Counseling Center  
 Oak Solutions Group  
 Mr. & Mrs Thomas Obletz\*  
 Pacific Gas & Electric  
 Mr. & Mrs James Phoenix\*\*  
 Allison Fletcher & Eliot Quataert  
 Red Hill Shopping Center  
 Supervisor Katie Rice  
 Robison Family Foundation\*\*  
 Suzannah Rose  
 Rick Ross  
 Tonia & David Rubin  
 Andrea Schultz  
 Lacey Sher  
 Peter Timmerman  
 Westamerica Bank\*\*

#### \$500 - \$999

Anonymous  
 Danielle Adams  
 Ann & Russ Albano\*  
 Gary & Liane Berringer\*  
 Karen Bischoff & Ed Boisson\*\*  
 David Bloom  
 Brandi Campbell  
 Adolph & Jeanne Capurro Revocable Trust\*\*  
 Claudia Carlson & Jack Brennen\*\*  
 Leslie & Richard Cohen\*\*  
 Michele Conway  
 Keegan & Coppin Co., Inc.\*\*  
 Todd Dolci  
 Flynkins Fund of Horizons Foundation\*  
 John Fruehe  
 Christine Isana Garcia  
 Darlene & Vernon Goins  
 Robert H. Greene Real Estate\*  
 Dr. Andrea Hedin & Peter Fisher  
 Hennessy Funds\*  
 Doug Hood  
 Linda Hothem\*\*  
 Joe & Cara Hunt\*\*  
 Sandra & Stephen Janachowski\*\*  
 Tom & Diane Johnston\*\*  
 Mr. & Mrs. Stuart Keirle\*\*  
 Mr. & Mrs. Larry Klaustermeier  
 David Lechuga  
 Frank Lindh & Brian Johnson\*\*  
 Brian Main  
 Purple Lady/Barbara J. Meislin Fund\*\*

Mara C. Meisner & Davy Crockett\*\*  
 Dennis Neary\*\*  
 Barbara & Richard Patchin  
 Linda & Michael Perrella\*\*  
 Deborah Piattelli  
 Edward Pollak Family Fund\*\*  
 Kathryn Raimondi  
 Honorable Mark Rice  
 Katie Rice-Jones & Bradley Jones  
 Salesforce.com  
 Oded Schwartz & Ruth Rosenthal  
 Mercedes Shinohara-Taylor  
 Amelia Spilger  
 Dan Stewart  
 Jeffrey & Alexandra Treene  
 Will Wagner  
 James Wandrey\*

#### \$250 - \$499

Abbott Laboratories Fund  
 Sheila Aceves  
 Francine & Tom Anthony  
 Darren Banks  
 Jessamy Barker  
 Melissa Blach & Ryan Henderson  
 Leigh-Ana Booher  
 Steve Burdo  
 Cal Skate Of Rohnert Park  
 Diane E. Carr\*  
 Andrea & Caben Chester  
 Estella Cisneros  
 Russ & Lynn Colombo\*  
 Celeste & John Craemer\*  
 Tori & George Eichleay  
 Elkin Family Fund\*  
 Jefferson & Shirley Graves\*\*  
 Michael & Elizabeth Hatfield Charitable Fund  
 Alan Hencky  
 Diana & Jeffrey Hill\*\*  
 Mark & Dale Hillard\*\*  
 Chris Hurd  
 Darryl Kalbaugh  
 Jason Lorenz  
 Stephanie Manieri  
 James Manno  
 Marin Lodge No. 200 I.O.O.F.\*\*  
 Vickie Marinovich  
 Jamila McCallum  
 Denisse Mendoza  
 Mark Micheli  
 Mr. & Mrs. Don O'Brien  
 Luis Ojeda  
 Farshad Owji  
 Margaret & Nicolas Pierattini  
 Pam & Mark Ross

Tracy & Betsy Ross  
 Evan Salisbury  
 Trista Samole  
 Christine Scott\*\*  
 Laura Taylor\*\*  
 United Way of North Central New Mexico  
 United Way California Capital Region  
 Peggy Vaughan\*  
 Robert Verhoeff  
 Alan & Joanne Vindisky  
 Sean Whyte  
 Joyce Wu  
 Jolene & Jeff Yee\*

#### \$100 - \$249

Anonymous (3)  
 Kevin Abaya  
 Sharon Adams  
 Debra Allen\*  
 Pamela Anderson\*  
 Dave Arntz  
 Mario Arteaga  
 Katherine Barrass\*\*  
 Beatriz Behrens  
 Howard & Marilyn Belove  
 Cindy & Bernie Benson\*\*  
 Berardi Family  
 Ann & Herb Bool  
 Carla Boufennara\*  
 Mark Brittain  
 John & Debby Butterworth  
 Ryan Buxbaum  
 Diana Caccamo\*  
 Jose Castro Gambino  
 Jasmine Cervantes  
 John & Catherine Chiosso  
 Linda & James Christensen\*  
 John Chung  
 Lorraine & Melvin Cohen\*\*  
 Nora Cooper  
 Pete & Judy Dardis\*  
 Tony & Annette Davary  
 Carla De Mello  
 Ken DeGraca  
 Ed & Rowena DeMayo\*\*  
 Elaine Dipalma\*  
 Robert E. Guice & Richard E. Esparza  
 Dave & Cheryl Egan  
 Ruth Falkenberg  
 James Findlay  
 Francis Fitzpatrick  
 Dean Fukushima  
 Vanessa Garcia  
 Raul Garcia  
 Jack Gruber  
 Kyle Haraszthy

Ahnjolie Haskins  
 John Heliotis  
 Matthew Holt  
 Matthew Holtz & Jacob Loyar\*\*  
 Holy Cross Lutheran Church  
 Donald & Virginia Humphreys\*  
 Stephen & Leslie Isaacs\*\*  
 Karen Jackson  
 Boomy Jensen  
 William W. Jones\*\*  
 Shauna & Tom Keenan\*\*  
 The Stephen & Julie Kimball Charitable Fund\*\*  
 Lynn Larsen  
 Marcela Lembi  
 William & Paula Jean Loeffler\*  
 Carole & Bruce MacPhail\*\*  
 Joe McDonough  
 The Mettner Family Trust\*\*  
 Mr. & Mrs. Minoia\*  
 Laura & Glenn Miwa\*\*  
 Angelica Montalvan  
 Cassandra Monteith  
 Audrey & Diego Mosquera  
 Janice Motha  
 Anne Nelson\*\*  
 Bea Newhall\*\*  
 Jessica O'Dea-Bumanglag  
 Stephanie O'Dell  
 Joe O'Hehir & Vicki Masseria  
 Ed O'Neil\*\*  
 Chris O'Neill\*\*  
 Rev. Betty Pagett\*\*  
 Adrienne Phalon\*  
 Plant Baybe  
 Sarah Pruden  
 Elizabeth Purvis\*  
 William & Regina Rafferty  
 Katie & Ronnie Rones  
 Louise Ross  
 Jeanine Rossi  
 Geraldine Sambel  
 Bob Samuels  
 Tim Schulte  
 Perry Seto  
 Carole & Douglas Sheft\*\*  
 Carole & John Shook\*\*  
 Barry Silve & Beth Silver  
 Mr. & Mrs. John Smith\*  
 Cherie Sorokin  
 Craig Sundstrom\*  
 Gerald & Ann Marie Suyderhoud\*\*  
 Sandra Tarr  
 Clint Thompson  
 Judy Torrison\*\*  
 Sue Ttee  
 Justine Underhill & David Mauroff  
 United Markets\*\*

# BUILDING BRIGHTER FUTURES

At Side by Side, we've made it our purpose to uplift young people by offering comprehensive support through a wide range of programs and services tailored to their unique needs. Every day, we work alongside youth and their families, guiding them through life's challenges and offering hope for a brighter future.

One of our programs, The Irene M. Hunt School, is a K-12 school that provides specialized programs to ensure that each student receives the personalized care and education they need to grow academically, socially, and emotionally. The school is a haven where students build resilience, regain confidence, and rediscover their potential so that they may rejoin their peers in their community schools prepared to learn and succeed.

Allow us to share with you a little about Joshua, a first grader at our Irene M. Hunt School, shown here with his sister Roma, and fathers JD and Ken.

*"Joshua definitely learns differently and engages with the world differently than other kids. With the small classes and the therapeutic environment at The Irene M. Hunt School, his needs are met. We have seen as he has grown that his needs shift, and then the care shifts. Everybody at the school on Team Joshua is committed to him. We, in our hearts, feel we found for this season of Joshua's life, the best place for his individual learning needs to be met, and his development to be observed, nurtured, and supported."*

- JD, Joshua's father

## **We can't do this vital work alone. We need your help.**

In addition to The Irene M. Hunt School, your generous support allows us to provide an array of award-winning programs to Bay Area youth including:

- **Individual and group therapy sessions and psychiatry services** to address mental health challenges
- **Specialized programs designed** to support LGBTQIA+ youth, their caregivers, and their teachers
- **Family support services** that foster healing and growth beyond the classroom
- **Housing and life skills services** for transition-age youth who are aging out of the foster care system or departing the juvenile justice system

Every dollar you contribute makes a tangible difference. With your help, we can expand our reach, enhance our programs, and ensure that no Bay Area youth is left without the care they need and deserve. Join us today in changing lives. Will you consider donating today?



Joshua's family 2024

Visit [SidebySideYouth.org](https://SidebySideYouth.org) (or use the QR Code) to learn more about our programs throughout the Bay Area and make your donation online today.  
**Together, we can make a lasting impact.**





Dave Uren  
Christina Van Winkle  
JP Van Zee  
Mary Ann Villarreal  
Anne-Marie Walker\*\*  
Julianne Wilhelm  
Paul Winter\*\*  
Mark Yowe

#### **\$50 - \$99**

Anonymous  
Enrique Asmar  
Todd Baker  
Vivian Bauer\*  
Ronald & Bonnie Bernardini\*\*  
Allan Bernstein  
Mary Bramblett  
Lynn Brown  
Lynda Bunn  
Melanie Buoncristiani  
Delaney Burk  
Dorothy Burke & David Voorhees\*\*  
Dorothy & Shepherd Burton\*\*  
Anna Cecchini  
Eleanor Chavez  
Linda Citti  
Alice Cogliandro\*\*  
Betty Cohen  
Cynthia Cross  
Kenneth Dearmore  
Terry & Paul Descalso\*\*  
Jane Dubyak  
Rosemary & Timothy Dugdale  
Jorge J. Enriquez\*\*  
Susan & Geoff Flint  
Robert Gollan\*  
Paul & Debra Guerin\*\*  
Andrea Herrera  
The Higgins Family  
Heather Hryciw  
Sommer Johansen  
Constance Jones\*  
Joann & George Juilly\*  
Mike Kemp  
Elizabeth Kulemin\*  
Sarah Liu  
Piero & Janice Lovi  
Janice Low  
Valerie Matthews  
Simon McBride & Jasmine Gavam  
Declan McKevitt  
Barbara Metzger\*\*  
Mr. Robert Miller\*  
The Thomas and Susan Moore Family Fund of the Ayco Charitable Foundation\*\*  
Edward Morgan  
Kathleen Mullen\*

Anonymous  
Yolita Nowak  
Matt O'Brien  
Laura Omalley  
William & Laura O'Malley  
William Otton  
Pacific Crest Group  
Mr. & Mrs. Richard Parker\*  
Kathleen Parker\*  
Margaret Paula\*  
Bruce Pohoriles  
Maggie Polan\*\*  
Brian Proteau  
Ingrid Purcell\*  
Ronaldo & Daisy Reodica  
Theresa Reyes\*\*  
Carla Rodriguez  
Robert & Kelly Satcher and kids  
Ms. Patricia Smith  
Janet Smith\*\*  
Barry Spitz  
Carolyn Steinberg  
Linda Vaio  
Maria Vella  
Bill & Beverly Wilhelm\*\*  
Judith Wilson  
Steve Zell

#### **GIFTS IN HONOR OF**

Sinead & Andrew Broughton  
Sonia Garcia  
Higgins Family  
Jeff Leonard  
Bernadette Miller  
Joy Phoenix  
Hayden Rubin  
Patti Faraday  
Ralph Edward T, Sr.  
Joanne Perrone  
Jack H. Thompson  
Reed K. Trenton  
Robert Vaughan

#### **GIFTS IN MEMORY OF**

Carter O. Belove  
Patti Faraday  
Ralph Edward T, Sr.  
Joanne Perrone  
Jack H. Thompson  
Reed K. Trenton  
Robert Vaughan

#### **VEHICLE DONATIONS**

Tonia & David Rubin

#### **GOVERNMENT CONTRACTS & GRANTS**

Alameda County Department of Child & Family Services/Youth Acceptance Collaborative

Alameda County Behavioral Health & Recovery Services  
County of Marin Behavioral Health & Recovery Services  
Full Circle Health Network

#### **EDUCATION PARTNERS**

Alameda Unified School District  
Berkeley Unified School District  
Brentwood Union School District  
Contra Costa SELPA  
Hayward Unified School District  
Healdsburg Unified School District  
Kentfield School District  
Larkspur- Corte Madera School District  
Mare Island Technology Academy  
Marin County Office of Education  
Marin County SELPA  
Mill Valley Unified School District  
Miller Creek Unified School District  
Novato Unified School District  
Oakland Unified School District  
Petaluma City Schools District  
Ross Valley Unified School District  
San Francisco Unified School District  
San Leandro School District  
San Lorenzo Unified School District  
San Rafael City Schools  
Santa Rosa City Schools  
Sausalito/Marin City School District  
Schools Sonoma County Office of Education  
Sebastopol Charter School  
Sebastopol Unified School District  
Shoreline School District  
Sonoma County Charter  
Tamalpais Union High School District  
Waugh School District

#### **LEGACY GIVING SOCIETY**

*Side by Side's Legacy Society honors those individuals who have thoughtfully included our agency in their estate plans. By designating a legacy gift to*

*Side by Side, the services and programs that they support will continue to touch the lives of our clients for years to come.*

Anonymous (4)  
Virginia Bertelsen  
Kathryn L. Black & Todd Sparks  
Sue Clark  
Diana & Jeffrey Hill  
Elizabeth Johnson  
William Jones  
Russ & Kathy Ketron  
Carole & Bruce MacPhail  
Nora J. McCallie  
Mr. & Mrs. Richard K. Robbins  
John B. Robinson  
Robert & Shirley Sanderson  
Mary Tash  
Cathy Tucker  
Charles Walter

#### **GUILD MEMBERS**

*The Guilds of Side by Side formed the backbone of support for our agency for decades. From community fundraisers to the Grape Festival to birthday treats for the Irene M. Hunt School, the Guilds have historically been integral to our organization. We are honored to recognize the Glenwood Guild below for their continued advocacy and commitment to the young people that we serve.*

#### Active Members

Gill Keirle, *President*  
Linda Christensen  
Alice Cogliandro  
Margaret Erickson  
Ruth Falkenberg  
Carole MacPhail  
Barbara Metzger  
Bea Newhall  
Joy Phoenix  
Maggie Polan  
Terrie Reyes

#### Supporting Members

Katherine Barrass  
Sue Moore  
Anne Nelson  
Vivi-Anne Regstad  
Jan Smith

#### **IN-KIND DONORS**

Sheila Aceves  
Danielle Adams

Bayonet & Black Horse Golf Courses  
 Bettinelli Vineyards  
 Body Kinetics Health Club & Spa  
 Brewsters Beer Garden  
 Deanna Brock  
 Buena Vista Winery  
 Cakes4kids  
 Chad Carlstedt  
 Comforts  
 Lyndsey & Jimmy Conrad  
 Cooley LLP  
 Fine Arts Museums of San Francisco  
 Christine Isana Garcia  
 Glenwood Guild  
 Jennifer L. Gotti  
 Hog Island Oyster Company, Inc.  
 Ashley & Riley Hurd  
 Sandra Karpman  
 Dr. Catherine Kenedy  
 Kia of Marin  
 Kitchen On Fire  
 Bonnie Meyer  
 Michael Merrill Design Studio  
 Monterey Bay Kayaks  
 Morton & Bassett Spices  
 Nixie Sparkling Water  
 Pacific Pinball Museum  
 Novato Toyota  
 Vince O'Driscoll

Mr. & Mrs. James Phoenix  
 Piazza D'Angelo  
 Presidio Bowling Center  
 San Francisco Symphony  
 Kimberly Rochat & Howard Schomer  
 Schumacher Photography  
 Scoma's Sausalito  
 SFJAZZ  
 Smuin Ballet  
 Jacqueline & David Spielberg  
 Steinbeck House Restaurant  
 Swirl San Anselmo  
 Wine Country Cyclery  
 Woodlands Market

### HOLIDAY GIVING COMMUNITY PARTNERS

*The following generous community partners help make sure that every Side by Side client has a gift for the holidays.*  
 Book Passage  
 Marin Country Mart  
 Mary's Kids  
 Mill Valley Middle School  
 Secret Santa of Sonoma/  
 Center for Volunteer and NonProfit Leadership

### VOLUNTEERS

*Side by Side gratefully thanks the volunteers and organizations listed below who have spent countless hours helping with our 2023-24 events, office administration, and program support.*

Kevin Abaya  
 Rusty Aceves  
 Sheila Aceves  
 Paola Arandia  
 Alan Barbosa  
 Emma Barbosa-Boehm  
 Ryan Beach  
 Beatriz Behrens  
 Karen Bischoff  
 Michelle Bott  
 Lito Briano  
 Michael Broughton  
 Brandi Campbell  
 Liz Capp  
 Andrea Chester  
 Lyndsey Conrad  
 Bruno de Sousa  
 Li DelPan  
 Margaret DeVore  
 Kelly Duenas  
 Daniela Espana  
 Eostrix Garcia-Freedman  
 Fayeg Garcia  
 Kara Ghilotti  
 Nicole Harrop

Ashley Hurd  
 Jennifer Irizarry  
 Karen Jackson  
 Bradley Jones  
 Seran Kim  
 Jason Lorenz  
 Jeffrey Madlangbayan  
 Shannon Matthieson  
 Senator Mike McGuire  
 Marla McLaughlin  
 Jennifer Miller  
 Madison Munson  
 Doug Murray  
 Mays Parsons  
 Maggie Paula  
 Cheryl Payan  
 Julie Quater  
 Patty Rahmer  
 Katie Rice Jones  
 Betsy Ross  
 Tracy Ross  
 Misty Rudolph  
 Evan Sjostrom  
 Nicole Skeffington  
 Raymond & Ricki Syufy  
 Trivo Trio  
 Jermey Watt  
 Sam Watt  
 Louis Wong  
 Ronin Wong  
 Sai Wong  
 Jeremy Yu

\* Donors to Side by Side for 10-19 years \*\* Donors to Side by Side for 20 years or more ○ For the Kids monthly giving donor

In preparing this report, we made every effort to ensure that it is accurate and complete. If there is an error or omission, please accept our apologies and notify the development department at [development@sidebysideyouth.org](mailto:development@sidebysideyouth.org) so we can correct our records. This report lists all cash gifts received between July 1, 2023 and June 30, 2024. Cash gifts made after that date will be published in next year's report. In-kind gifts associated with an event held during the 2023-24 fiscal year are included in this report regardless of the date of receipt.

## WAYS TO GIVE [SidebySideYouth.org/ways-to-give](https://SidebySideYouth.org/ways-to-give)



**Monthly Giving** Switch to sustained monthly giving via credit card to provide Side by Side with regular support we can count on.



**Vehicle Donations** Have an old car taking up space in your driveway or a need to free up your boat slip? Donate it to Side by Side!



**Legacy Giving** Leave a lasting legacy by designating a future gift through your estate plan.



**PayPal** We want to make donating easier. We now accept donations through PayPal at [paypal.com/paypalme/sidebysideyouth](https://paypal.com/paypalme/sidebysideyouth).



**Company Match** Increase the value of your gift by taking advantage of your workplace's matching gift program.



**Give In Kind** Contributions of donated goods and services help stretch our program budgets that much further.



**Stock** Gifts of appreciated securities can be an easy way of making your charitable dollars go further.



**Online Donations** You can make a gift securely online at [SidebySideYouth.org](https://SidebySideYouth.org) anytime, day or night.





The "Sunny Hills" of Side by Side's San Anselmo campus





300 Sunny Hills Drive, Bldg. 5  
San Anselmo, CA 94960  
Tel: 415-457-3200

*Return Service Requested*

SidebySideYouth.org

sidebysideyouth

sidebysideyouth

sidebysideyouth

NONPROFIT  
RATE



**Side by Side Mission:** To walk with young people impacted by adversity toward a future with connection and meaning.

**Side by Side Vision:** That all youth in our communities are resilient and have the resources, support, and skills to thrive and nurture the next generations.



## Join us for an event in 2025!

### WINTER

**MARIN VALENTINE'S BALL**  
**FEBRUARY 8, 2025**  
**MARIN CIVIC CENTER, SAN RAFAEL**

### SPRING

**GLENWOOD GUILD'S WILD WEST BINGO TOURNAMENT**  
**MAY 3, 2025**  
**MCGINNIS GOLF CLUB, SAN RAFAEL**

### SUMMER

**BANK OF MARIN 31ST ANNUAL GOLF TOURNAMENT**  
**JUNE 2, 2025**  
**STONETREE GOLF CLUB, NOVATO**

**QUEER LOVE YOUTH PRIDE FESTIVAL**  
**JUNE 6, 2025**  
**ASHLAND YOUTH CENTER, ASHLAND**

### FALL

**REACH FOR THE STARS DENIM & DIAMONDS GALA**  
**SEPTEMBER 19, 2025**  
**COLLEGE OF MARIN'S JONAS CENTER, NOVATO**

Learn more at [SidebySideYouth.org/events](https://SidebySideYouth.org/events)

